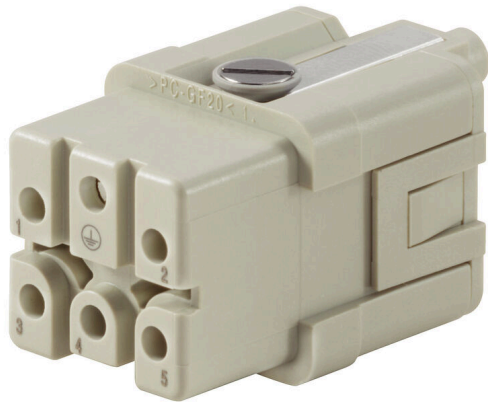


## HDC HQ 5 FC



A small unit that packs a big punch. The electrical values speak for themselves. Proven HE crimp contacts can also be used here.

Number of poles: 5 (+PE)

Rated current: 16 A

Rated voltage: 250 V

Rated voltage acc. to UL/CSA: 600 V AC/DC

### General ordering data

Version	HDC insert, Female, 230 V, 20 A, Number of poles: 5, Crimp connection, Installation size: 1
Order No.	<a href="#">1912460000</a>
Type	HDC HQ 5 FC
GTIN (EAN)	4032248542055
Qty.	1 items

Technical data

Approvals

Approvals



ROHS	Conform
UL File Number Search	<a href="#">UL Website</a>
Certificate No. (cURus)	E92202

Dimensions and weights

Depth	21 mm	Depth (inches)	0.8268 inch
Height	40.1 mm	Height (inches)	1.5787 inch
Width	21 mm	Width (inches)	0.8268 inch
Length	21 mm	Length (inches)	0.8268 inch
Net weight	12.8 g		

Temperatures

Limit temperature	-40 °C ... 125 °C
-------------------	-------------------

Environmental Product Compliance

RoHS Compliance Status	Compliant with exemption
RoHS Exemption (if applicable/known)	6c
REACH SVHC	Lead 7439-92-1, Potassium perfluorobutane sulfonate 29420-49-3
SCIP	b67daa31-7dca-434d-8290-da7fb52f83a2

Chemical resistance	Substance	Acetone
	Chemical resistance	Resistant
	Substance	Ammonia, watery
	Chemical resistance	Conditionally resistant
	Substance	Petrol
	Chemical resistance	Resistant
	Substance	Benzene
	Chemical resistance	Resistant
	Substance	Diesel oil
	Chemical resistance	Conditionally resistant
	Substance	Acetic acid, concentrated
	Chemical resistance	Resistant
	Substance	Potassium hydroxide
	Chemical resistance	Conditionally resistant
	Substance	Methanol
	Chemical resistance	Conditionally resistant
	Substance	Motor oil
	Chemical resistance	Conditionally resistant
	Substance	Lye, diluted
	Chemical resistance	Resistant
Substance	Hydrochlorofluorocarbons	
Chemical resistance	Conditionally resistant	
Substance	Outdoor use	
Chemical resistance	Conditionally resistant	

Dimensions

Width	21 mm	Total length base	21 mm
Height of socket	40.1 mm		

## HDC HQ 5 FC

Weidmüller Interface GmbH &amp; Co. KG

Klingenbergstraße 26

D-32758 Detmold

Germany

www.weidmueller.com

## Technical data

## General data

Number of poles	5		
Plugging cycles, silver	≥ 500		
Plugging cycles, gold	≥ 500		
Type of connection	Crimp connection		
Installation size	1		
UL 94 flammability rating	V-0		
Volume resistance	≤2 mΩ		
Colour	beige		
Insulation resistance	1010 Ω		
Insulating material	PC glass-fibre reinforced (UL-listed and railway-certified)		
Insulating material group	IIIa		
Tightening torque, max. PE connection	0.55 Nm		
Type	Female		
Pollution severity	3		
Tightening torque, min. PE connection	0.5 Nm		
Basic material	Copper alloy		
Series	HQ		
Rated voltage (DIN EN 61984)	230 V		
Rated voltage according to UL/CSA	600 V AC/DC		
Rated impulse voltage (DIN EN 61984)	4 kV		
Rated current (DIN EN 61984)	20 A		
Rated current (UR)	Wire connection cross section AWG	AWG 12	
	Rated current	18 A	
	Wire connection cross section AWG	AWG 14	
	Rated current	15 A	
	Wire connection cross section AWG	AWG 16	
	Rated current	12 A	
	Wire connection cross section AWG	AWG 18	
	Rated current	8 A	
	Wire connection cross section AWG	AWG 20	
	Rated current	8 A	
	Rated current (cUR)	Wire connection cross section AWG	AWG 12
		Rated current	19 A
		Wire connection cross section AWG	AWG 14
		Rated current	15 A
Wire connection cross section AWG		AWG 16	
Rated current		12 A	
Wire connection cross section AWG		AWG 18	
Rated current		8 A	
Wire connection cross section AWG		AWG 20	
Rated current		8 A	
Free from halogens		false	
Low smoke acc. DIN EN 45545-2		Yes	
BG		1	
Number of power contacts		5	
Rated voltage conductor-conductor (III/3)	400 V		

## Connection data PE

Connection type PE	Screw connection	Blade size, slotted (PE connection)	SD 0.6 x 3.5
Stripping length PE connection	10 mm	Tightening torque, max. PE connection	0.55 Nm
Tightening torque, min. PE connection	0.5 Nm	Fixing screw	M 3
Rated cross-section	2.5 mm <sup>2</sup>	Wire cross section, AWG (PE), min.	AWG 20
Wire cross section, AWG (PE), max.	AWG 14		

## HDC HQ 5 FC

**Weidmüller Interface GmbH & Co. KG**

Klingenbergstraße 26  
D-32758 Detmold  
Germany

[www.weidmueller.com](http://www.weidmueller.com)

## Technical data

### Power contact

Rated current (DIN EN 61984), power contact 20 A

### Version

Wire connection cross section AWG, max.	AWG 12	Stripping length, rated connection	7.5 mm
Type of connection	Crimp connection	Installation size	1
Volume resistance	≤2 mΩ	Wire connection cross section AWG, min.	AWG 20
Wire connection cross-section, finely stranded with wire-end ferrules DIN 46228/4, max.	2.5 mm <sup>2</sup>	Wire connection cross-section, finely stranded with wire-end ferrules DIN 46228/4, min.	0.5 mm <sup>2</sup>
Wire connection cross section, finely stranded, max.	2.5 mm <sup>2</sup>	Wire connection cross section, finely stranded, min.	0.5 mm <sup>2</sup>
Conductor cross-section, max.	2.5 mm <sup>2</sup>	Conductor cross-section, min.	0.5 mm <sup>2</sup>
Basic material	Copper alloy	BG	1

### Classifications

ETIM 8.0	EC000438	ETIM 9.0	EC000438
ETIM 10.0	EC000438	ECLASS 14.0	27-44-02-05
ECLASS 15.0	27-44-02-05		

Drawings

Abmessungen



Kontaktanordnung



## HDC HQ 5 FC

**Weidmüller Interface GmbH & Co. KG**  
 Klingenbergstraße 26  
 D-32758 Detmold  
 Germany

www.weidmueller.com

## Accessories

### Slotted screwdriver



VDE insulated slot-head screwdriver, SDI DIN 7437, ISO 2380/2, drive output acc. to DIN 5264, ISO 2380/1. SoftFinish grip

#### General ordering data

Type	SDIS 0.6X3.5X100	Version	
Order No.	<a href="#">9008390000</a>	Screwdriver, Screwdriver	
GTIN (EAN)	4032248056354		
Qty.	1 ST		
Type	SDS 0.6X3.5X100	Version	
Order No.	<a href="#">9008330000</a>	Screwdriver, Screwdriver	
GTIN (EAN)	4032248056286		
Qty.	1 ST		
Type	SDIS 0.8X4.0X100	Version	
Order No.	<a href="#">9008400000</a>	Screwdriver, Screwdriver	
GTIN (EAN)	4032248056361		
Qty.	1 ST		
Type	SDS 0.8X4.0X100	Version	
Order No.	<a href="#">9008340000</a>	Screwdriver, Screwdriver	
GTIN (EAN)	4032248056293		
Qty.	1 ST		

### Crimping tools



Crimping tools for turned contacts

- Ratchet guarantees precise crimping
- Release option in the event of incorrect operation
- With stop for exact positioning of the contacts.

#### General ordering data

Type	CTX CM 1.6/2.5	Version	
Order No.	<a href="#">9018490000</a>	Pressing tool, Crimping tool for contacts, 0.14mm <sup>2</sup> , 4mm <sup>2</sup> , W crimp	
GTIN (EAN)	4008190884598		
Qty.	1 ST		
Type	CTIN CM 1.6/2.5	Version	
Order No.	<a href="#">9205430000</a>	Pressing tool, Crimping tool for contacts, 0.14mm <sup>2</sup> , 6mm <sup>2</sup> , 4-indent crimp	
GTIN (EAN)	4032248733446		
Qty.	1 ST		

## HDC HQ 5 FC

Weidmüller Interface GmbH &amp; Co. KG

Klingenbergstraße 26

D-32758 Detmold

Germany

www.weidmueller.com

## Accessories

## Contact removal tools



Weidmüller offers a variety of crimping tools, contact removal tools, and fibre optic tools.

## General ordering data

Type	REMOVAL TOOL HE	Version	
Order No.	<a href="#">1866750000</a>	Tools, Contact Removal Tool	
GTIN (EAN)	4032248437078		
Qty.	1 ST		

## HE

Various accessories are available for our inserts. This includes coding elements for the inserts.



## General ordering data

Type	HDC HE CP	Version	
Order No.	<a href="#">1003240000</a>	Heavy-duty connectors, Accessories, Coding System	
GTIN (EAN)	4032248698233		
Qty.	100 ST		

## Crimp contacts HE



Crimps provide a electrical and mechanical connection between wire and contact that is both secure and reliable. The optimal crimp connection is gas-tight and corrosion-resistant.

## General ordering data

Type	HDC-C-HE-BM0.5AG	Version	
Order No.	<a href="#">1201100000</a>	Heavy-duty connectors, Crimp contact, HE, HEE, HQ, MixMate,	
GTIN (EAN)	4008190142698	Female, Conductor cross-section, max.: 0.5, turned, Copper alloy	
Qty.	100 ST		

## HDC HQ 5 FC

**Weidmüller Interface GmbH & Co. KG**  
 Klingenbergstraße 26  
 D-32758 Detmold  
 Germany

www.weidmueller.com

## Accessories

Type	HDC-C-HE-BM0.75-1.00AG	Version
Order No.	<a href="#">1201200000</a>	Heavy-duty connectors, Crimp contact, HE, HEE, HQ, MixMate,
GTIN (EAN)	4008190044480	Female, Conductor cross-section, max.: 1, turned, Copper alloy
Qty.	100 ST	
Type	HDC-C-HE-BM1.5AG	Version
Order No.	<a href="#">1201300000</a>	Heavy-duty connectors, Crimp contact, HE, HEE, HQ, MixMate,
GTIN (EAN)	4008190100346	Female, Conductor cross-section, max.: 1.5, turned, Copper alloy
Qty.	100 ST	
Type	HDC-C-HE-BM2.5AG	Version
Order No.	<a href="#">1201400000</a>	Heavy-duty connectors, Crimp contact, HE, HEE, HQ, MixMate,
GTIN (EAN)	4008190047078	Female, Conductor cross-section, max.: 2.5, turned, Copper alloy
Qty.	100 ST	
Type	HDC-C-HE-BM4.0AG	Version
Order No.	<a href="#">1201500000</a>	Heavy-duty connectors, Crimp contact, HE, HEE, HQ, MixMate,
GTIN (EAN)	4008190148096	Female, Conductor cross-section, max.: 4, turned, Copper alloy
Qty.	100 ST	
Type	HDC-C-HE-BM0.5AU	Version
Order No.	<a href="#">1651470000</a>	Heavy-duty connectors, Crimp contact, HE, HEE, HQ, MixMate,
GTIN (EAN)	4008190400149	Female, Conductor cross-section, max.: 0.5, turned, Copper alloy
Qty.	100 ST	
Type	HDC-C-HE-BM0.75-1.00AU	Version
Order No.	<a href="#">1651480000</a>	Heavy-duty connectors, Crimp contact, HE, HEE, HQ, MixMate,
GTIN (EAN)	4008190400156	Female, Conductor cross-section, max.: 1, turned, Copper alloy
Qty.	100 ST	
Type	HDC-C-HE-BM1.5AU	Version
Order No.	<a href="#">1651490000</a>	Heavy-duty connectors, Crimp contact, HE, HEE, HQ, MixMate,
GTIN (EAN)	4008190400163	Female, Conductor cross-section, max.: 1.5, turned, Copper alloy
Qty.	100 ST	
Type	HDC-C-HE-BM2.5AU	Version
Order No.	<a href="#">1651500000</a>	Heavy-duty connectors, Crimp contact, HE, HEE, HQ, MixMate,
GTIN (EAN)	4008190400170	Female, Conductor cross-section, max.: 2.5, turned, Copper alloy
Qty.	100 ST	
Type	HDC-C-HE-BM4.0AU	Version
Order No.	<a href="#">1651510000</a>	Heavy-duty connectors, Crimp contact, HE, HEE, HQ, MixMate,
GTIN (EAN)	4008190400187	Female, Conductor cross-section, max.: 4, turned, Copper alloy
Qty.	100 ST	

## 5-pole



A small unit that packs a big punch. The electrical values speak for themselves. Proven HE crimp contacts can also be used here.

Number of poles: 5 (+PE)

Rated current: 16 A

Rated voltage: 250 V

Rated voltage acc. to UL/CSA: 600 V AC/DC

## Accessories

### General ordering data

Type	HDC HQ 5 MC	Version	
Order No.	<a href="#">1912440000</a>	HDC insert, Male, 230 V, 20 A, Number of poles: 5, Crimp	
GTIN (EAN)	4032248542031	connection, Installation size: 1	
Qty.	1 ST		