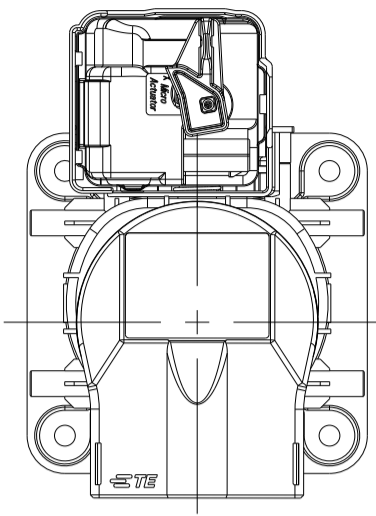


LOCKING UNIT POSITION UPPER  
CABLE OUTLET POSITION 3

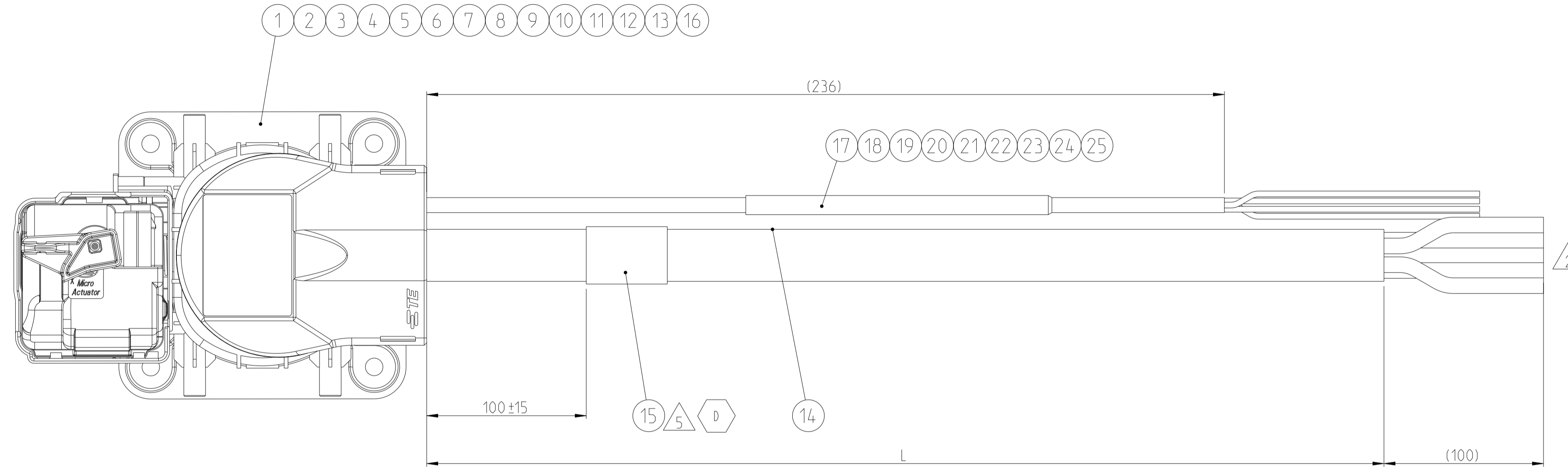
1:2



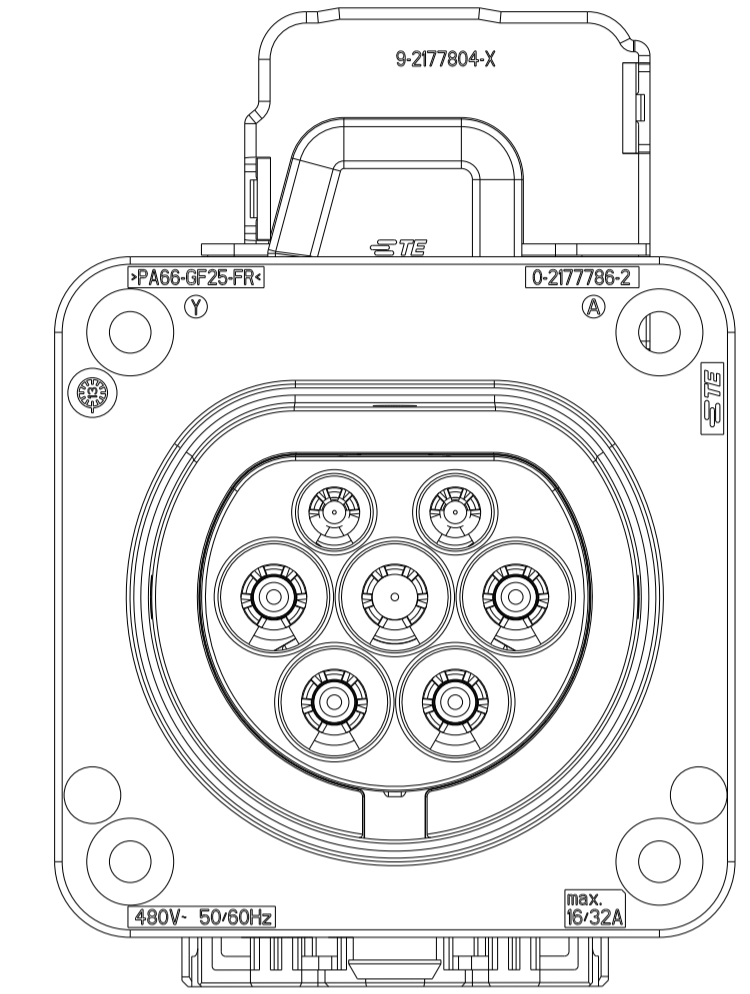
THE DRAWING SHOWS THE 2-DIMENSIONAL REFERENCE COMPONENT CONDITION OF THE ASSEMBLY TO IDENTIFY AND SPECIFY THE NECESSARY DIMENSIONS ONLY. THE DELIVERED PARTS MAY DEVIATE FROM THE DRAWING REGARDING THE ORIENTATION AND POSITION OF EACH COMPONENT (e.g. SLACK CABLE), SO FAR THE FUNCTIONALITY IS NOT CONCERNED.

DIE ZEICHNUNG ZEIGT DEN 2-DIMENSIONALEN IDEALZUSTAND DES ZUSAMMENBAUTEILS BEZÜGLICH DER KOMPONENTEN ZUR IDENTIFIKATION UND SPEZIFIKATION DER NOTWENDIGEN DIMENSIONEN. HINSICHTLICH DER ORIENTIERUNG UND DER LAGE DER KOMPONENTEN (z.B. BIEGESCHLAPPE KABEL) KÖNNEN DIE GELIEFERTEN TEILE VON DER ZEICHNUNG ABWEICHEN, SOFERN DIE FUNKTIONALITÄT NICHT BEEINTRÄCHTIGT IST.

REVISIONS				
REV	DATE	DESCRIPTION	BY	CHK
B1	10DEC2020	DRAFTING CORRECTION	DS	JF
C	15NOV2021	BOM UPDATE	DS	JF
D	14JAN2022	LABEL CHANGED	DS	JF



INTERFACE VIEW  
Schnittstellen Ansicht



WIRING SCHEDULE:

INLET CHARGER ITEM NO. 1 CAVITY-NO.	IDENTIFICATION	WIRE COLOUR	WIRE SECTION
1	L1	BROWN	6mm <sup>2</sup> (ITEM 14)
2	L2	BLACK	6mm <sup>2</sup> (ITEM 14)
3	L3	GREY	6mm <sup>2</sup> (ITEM 14)
4	N	BLUE	6mm <sup>2</sup> (ITEM 14)
5	PE	GREEN/YELLOW	6mm <sup>2</sup> (ITEM 14)
6	CP	BROWN	0.75mm <sup>2</sup> (ITEM 17 or 21)
7	PP	GREEN	0.75mm <sup>2</sup> (ITEM 18 or 22)
-	SENSOR	VIOLET	0.75mm <sup>2</sup> (ITEM 19 or 23)
		WHITE/BLACK	0.75mm <sup>2</sup> (ITEM 20 or 24)

LENGTH SCHEDULE:

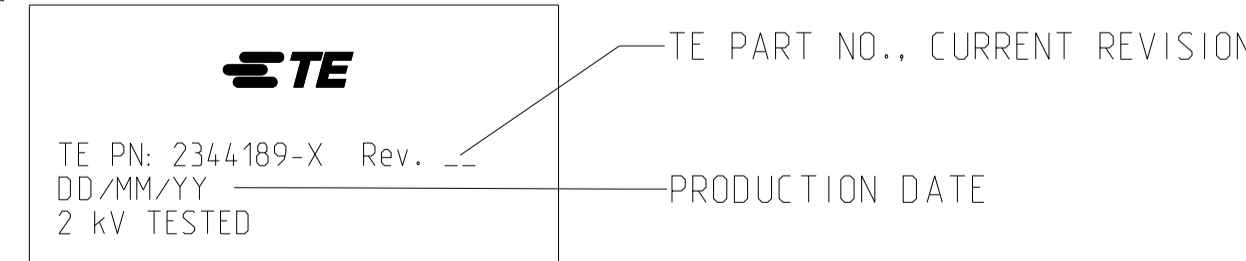
TE PART NO.	REV.	LENGTH L (mm)	TOL.	TEMP SENSOR	CABLE OUTLET POSITION
2344189-1	C	1000	+30	NTC	Position 3
2344189-2	C	5000	+60		
2344189-3	D	1000	+30	PT1000	Position 3
2344189-4	D	5000	+60		

ITEM NO.	DESCRIPTION	QTY	WEIGHT OF ASSY NO. [g]
25	ATUM 6/2-0 SP		
24	ATUM 9/3-0 SP		
23	SPLICE. SOLIS PARA 22-16		
22	GSZH-125-NR1-23mm		
21	TEMPERATURE SENSOR		
20	ACW 0219-0.75-90(INS). WHITE/BLACK		
19	ACW 0219-0.75-7(INS). VIOLET		
18	ACW 0219-0.75-5(INS). GREEN		
17	ACW 0219-0.75-10(INS). BROWN		
16	CAB TIE, CLIP, HELL. T18R-HR-N46		
15	LABEL, HELL. TYPE 323		
14	CABLE 5 x 6.0 mm <sup>2</sup>		
13	O-RING, 3 x 1.5		
12	O-RING, 4 x 1.5		
11	PIN DIA 3.0, PP		
10	PIN DIA 3.0, CP		
9	PIN DIA 6.0, PE		
8	PIN DIA 6.0, L/N, ASSY		
7	SELF TAPPING SCREW		
6	FAMILY SEAL, MIXED		
5	INSULATION COVER, TE, COVER INLET		
4	CABLE FIXATION, TE, COVER INLET		
3	ACTUATOR, LOCKING UNIT, ASSY		
2	2. LOCK, TE, IEC62196-2 TYPE 2		
1	7 POS, MIXED, HSG, IEC 62196-2 TYPE 2		

NOTES

- PACKAGING ACCORDING SPECIFICATION V2344189.
- STRIPPED OUTER JACKET, BRAID, INNER SHEATH AND CUT FILLER FOR ELECTRICAL TEST PURPOSE. ELECTRICAL TESTING IS ACCORDING APPLICATION SPECIFICATION. 108-18857: CHAPTER 3.1.1. a,b,c AND CHAPTER 3.3.3 EXCEPT BRAID RESISTING
- APPLICATION SPECIFICATION: 114-94163-2 CHARGE INLET IEC 62196-2 TYPE II.
- CUTTING LENGTHS TO BE FIXED BY MANUFACTURING.
- MANUFACTURING CODE: TE PART NO., CURRENT REV. LEVEL AND DATE CODE (DD.MM.YY). TO BE PRINTED ON LABEL (ITEM 16). LABEL TO BE APPLIED TO THE CABLE AFTER SUCCESSFUL ELECTRICAL TEST.
- ALL SPLICES TO BE COVERED BY 23mm ±1mm SHRINK TUBE. SHRINK TUBE TO BE CENTERED OVER THE SPLICE, SO THAT NO METAL OF THE SPLICE IS VISIBLE OUT OF THE TUBE. ALTERNATIVELY, THE SHRINK TUBE CH03472001 CAN BE USED INSTEAD OF ITEM NO. 22 (TO BE CUT TO LENGTH).

LABEL LEGEND:



TE Connectivity

TE PART NO.: 2344189-X Rev. ...

PRODUCTION DATE

2 kV TESTED

TE Connectivity

HYB. CHARGE INLET TYPE 2, HYB ASSY, 6 sqmm LOCKING UNIT POSITION UPPER

00779

SCALE 1:1

SHEET 1 OF 1

REV D