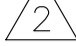
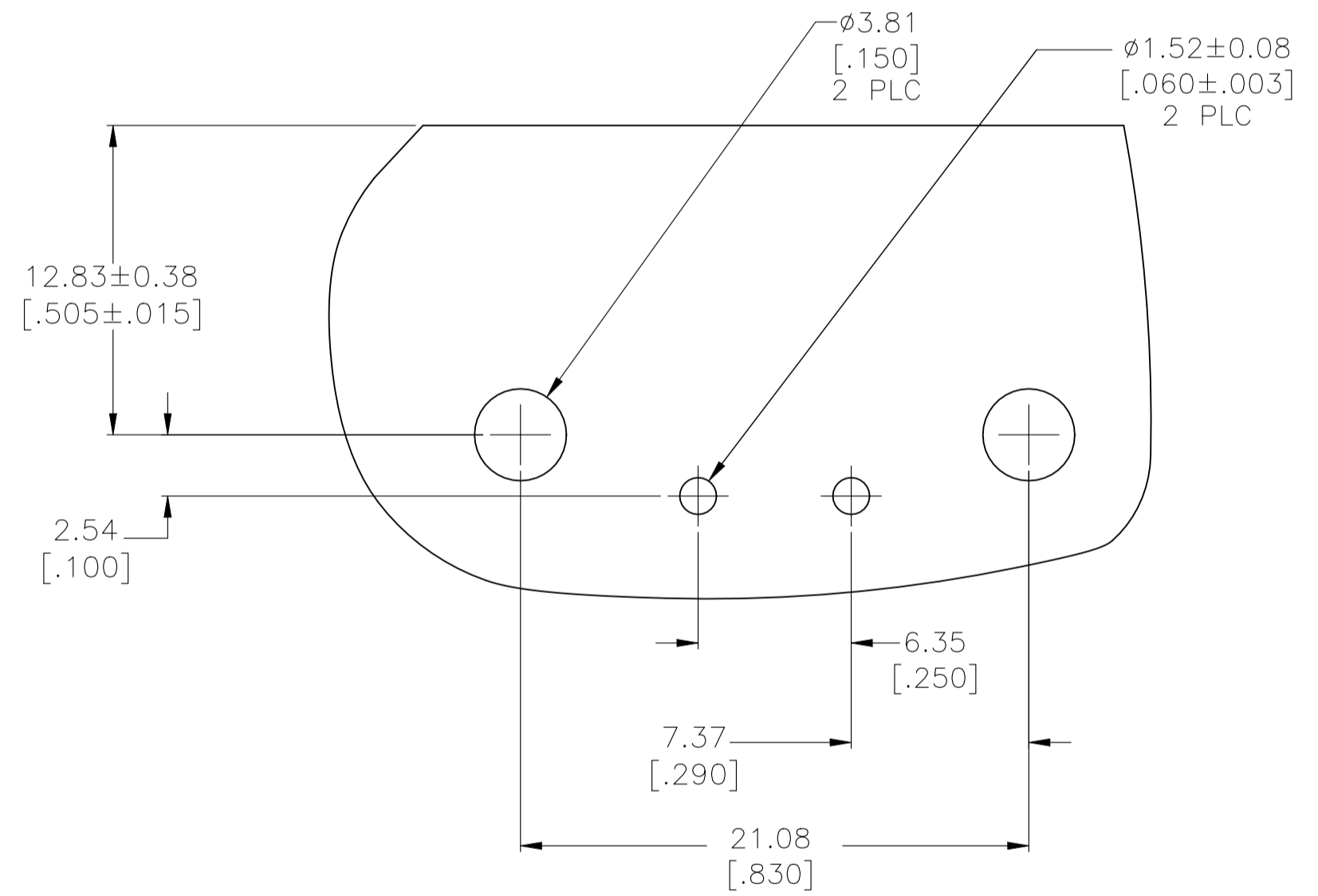
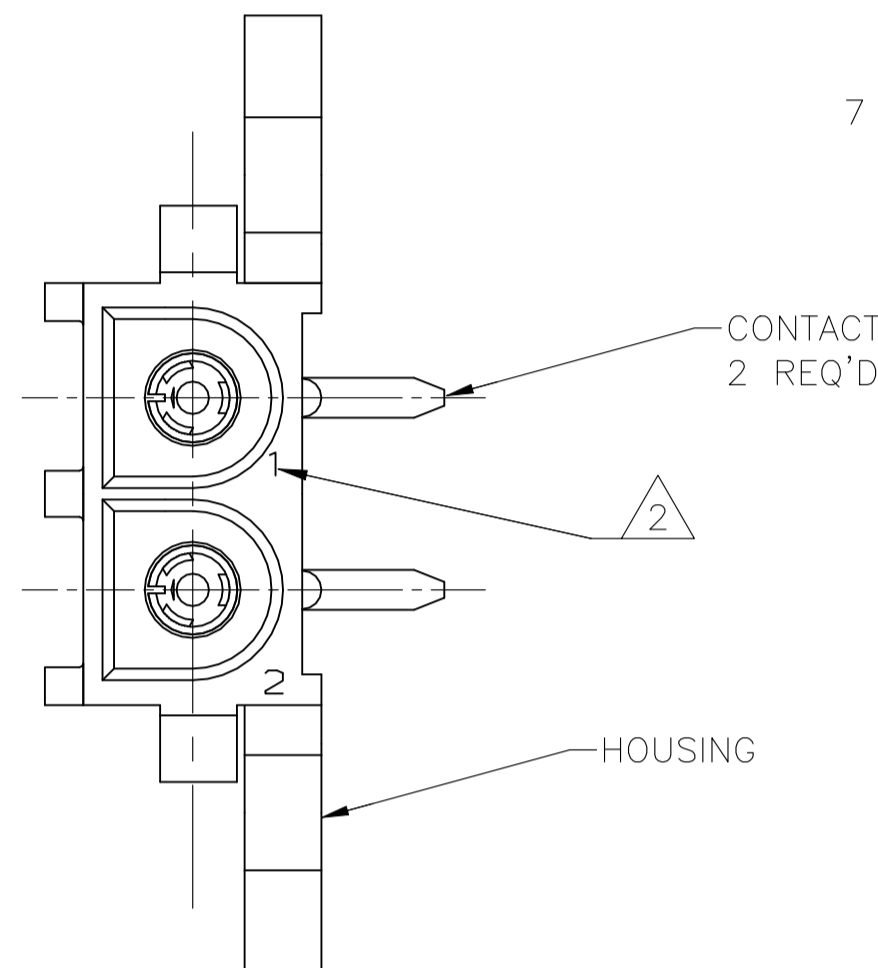
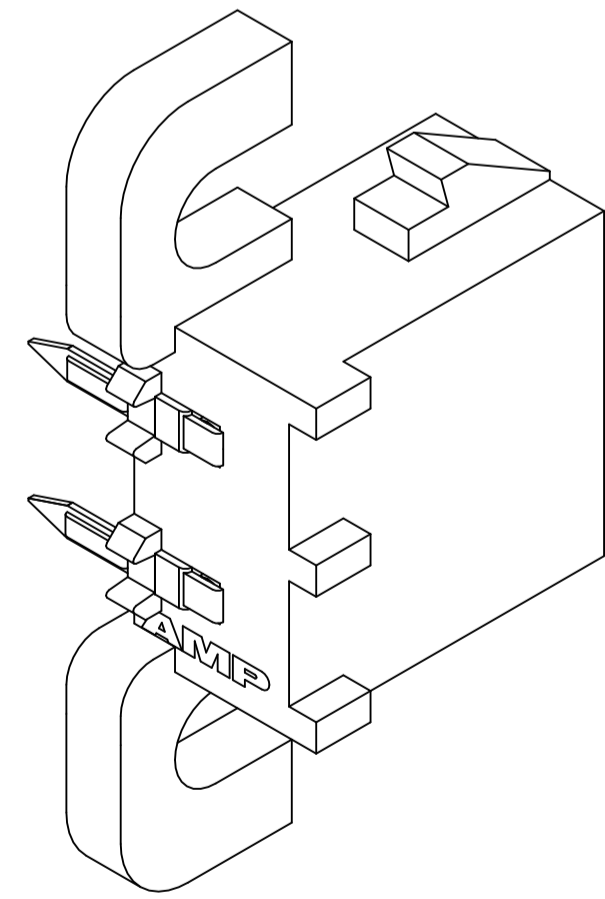


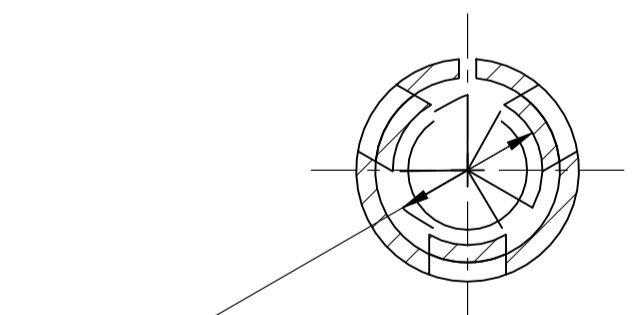
- 1 PARTS COMPLY WITH AMP SOLDERABILITY SPECIFICATION 109-11-5.
- 2  CIRCUIT IDENTIFICATION CHARACTERS ARE ADJACENT TO THE INDICATED CAVITIES, BUT LOCATION AND ORIENTATION MAY DIFFER FROM PRINT.
- 3 DIMENSIONS IN BRACKETS ARE IN INCHES.
- 4 FLAMMABILITY UL V-0 FOR THICKNESS 0.4, 0.45, 0.8, 1.6, AND 3.0 PER IEC 60695-11-10.
- 5 GLOW WIRE FLAMMABILITY (GWF1): 960°C FOR THICKNESS 0.45, 0.8, 1.6, AND 3.0 PER IEC 60695-2-12.
- 6 GLOW WIRE IGNITION (GWIT): 825°C FOR THICKNESS 0.45, 800°C FOR THICKNESS 0.8, 775°C FOR THICKNESS 1.6 AND 3.0 PER IEC 60695-2-13.
- 7 DIMENSIONS SHOWN REPRESENT PRODUCT IN DRY CONDITION. ADDITIONAL 2% GROWTH DUE TO END USE LOCATION MOISTURE ABSORPTION MAY OCCUR AND SHOULD BE ACCOUNTED FOR.



RECOMMENDED MOUNTING HOLE PATTERN
FOR 1.57[.062] THICK P.C. BOARD


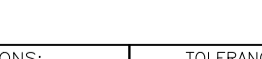


3-DIMENSIONAL MODELS



SECTION A—A
SCALE 10:1

PH BRZ TIN	NYLON UL V-0 GW	1969797-1
CONTACT	HOUSING	PART NO

THIS DRAWING IS A CONTROLLED DOCUMENT.		DWG: SARVESH WARAD 26DEC2015 DESIGNED BY: SARVESH WARAD 26DEC2015 CHK: WICKES, EVAN 26DEC2015		 TE Connectivity	
DIMENSIONS: mm [INCHES] 		TOLERANCES (UNLESS OTHERWISE SPECIFIED): APD: WICKES, EVAN 26DEC2015 PRODUCT SPEC APPLICATION SPEC		NAME SOCKET HEADER ASSEMBLY, RIGHT ANGLE MOUNT, 2 POSITION, UNIVERSAL MATE-N-LOK(TM)	
MATERIAL		WEIGHT		SIZE	CAGE CODE
SEE TABLE		0.000000		A1	00779
FINISH		CUSTOMER DRAWING		DRAWING NO	
SEE TABLE				C-1969797	
				SCALE	SHEET
				4:1	1 OF 1
				REV	A