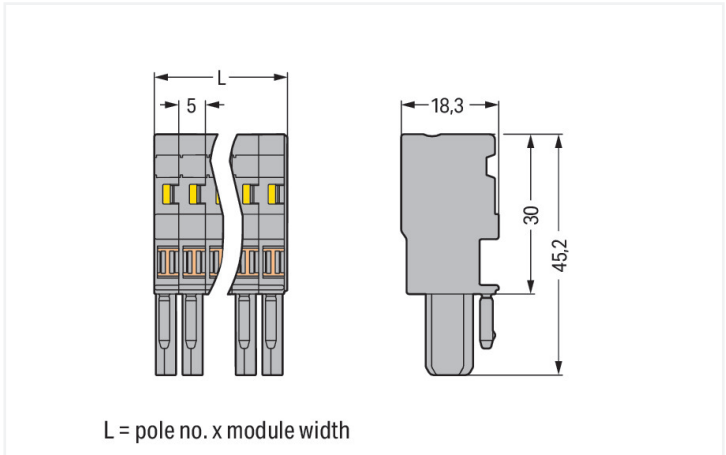


Color: ■ gray



Dimensions in mm

Female connector, 769 Series, gray

This female connector (item number 769-110) provides seamless electrical installations. Pluggable rail-mount terminal blocks are hugely popular in switchgear and control systems, for example, in railroad technology. They combine the best of rail-mount terminal blocks and connectors for the perfect solution. Variable wiring systems make pre-assembly easy, which saves both time and money in production, installation, operation, and maintenance. Rated current and voltage are important parameters when selecting a pluggable rail-mount terminal block, as they indicate how the product can be used. This product has a rated voltage of 500 V and a rated current of 32 A. Strip lengths must be between 8 mm and 9 mm when connecting conductors to this female connector. This product features conductor terminals and utilizes CAGE CLAMP®. Our celebrated universal connection known as CAGE CLAMP® is industry-leading when it comes to connection technology and electrical interconnections. The item's dimensions are 50 x 45.2 x 18.3 mm (width x height x depth). Depending on the conductor type, this female connector is designed for conductor cross sections ranging from 0.08 mm² to 4 mm². Ten potentials can connect ten poles using the ten clamping points. The gray housing is made of polyamide (PA66) for insulation. An operating tool is used to operate this female connector/socket. Conductors made of copper can be connected thanks to front-entry wiring.

Notes			
Safety Information		According to EN 61984, pluggable connectors without current interrupting capacity must not be mated or unmated when live or under load.	

Electrical data			
Ratings per		IEC/EN 61984	
Overvoltage category	III	III	II
Pollution degree	3	2	2
Nominal voltage	500 V	-	-
Rated surge voltage	6 kV	-	-
Rated current	32 A	-	-

Connection data		Connection 1	
Clamping units	10	Connection technology	CAGE CLAMP®
Total number of potentials	10	Actuation type	Operating tool
		Connectable conductor materials	Copper
		Nominal cross-section	4 mm² / 12 AWG
		Solid conductor	0.08 ... 4 mm² / 28 ... 12 AWG
		Fine-stranded conductor	0.08 ... 4 mm² / 28 ... 12 AWG
		Strip length	8 ... 9 mm / 0.31 ... 0.35 inches
		Pole number	10
		Wiring direction	Front-entry wiring



Physical data	
Width	50 mm / 1.969 inches
Height	45.2 mm / 1.78 inches
Depth	18.3 mm / 0.72 inches
Module width	5 mm / 0.197 inches

Mechanical data	
Variable coding	Yes
Direct ground contact to DIN-rail/drilled hole/housing	No
Marking level	Side marking
Anti-rotation protection	Yes

Plug-in connection	
Contact type (pluggable connector)	Female connector/socket
Connector (connection type)	for conductor
Mismating protection	No
Plugging without loss of pin spacing	Yes

Material data	
Note (material data)	<a href="#">Information on material specifications can be found here</a>
Color	gray
Material group	I
Insulation material (main housing)	Polyamide (PA66)
Flammability class per UL94	V0
Fire load	0.557 MJ
Halogen-free	Yes
Weight	31.4 g

Environmental requirements	
Processing temperature	-35 ... +85 °C
Continuous operating temperature	-60 ... +105 °C

Commercial data	
PU (SPU)	25 pcs
Packaging type	Box
Country of origin	DE
GTIN	4044918471787
Customs tariff number	85366990990

Product classification	
UNSPSC	39121409
eCl@ss 10.0	27-14-11-06
eCl@ss 9.0	27-14-11-06
ETIM 9.0	EC001284
ETIM 8.0	EC001284
ECCN	NO US CLASSIFICATION



Environmental Product Compliance	
RoHS Compliance Status	Compliant,No Exemption

Approvals / Certificates

General approvals			Declarations of conformity and manufacturer's declarations		
Approval	Standard	Certificate Name	Approval	Standard	Certificate Name
CCA DEKRA Certification B.V.	EN 60947	NTR NL-7626	EU-Declaration of Confor- mity WAGO GmbH & Co. KG	-	-
CCA DEKRA Certification B.V.	EN 61984	2190419.02	Railway WAGO GmbH & Co. KG	-	Z00004428.000
CCA DEKRA Certification B.V.	IEC 61984	NL-47799/A1			
CSA CSA Group	C22.2	1101144			
KEMA/KEUR DEKRA Certification B.V.	EN 60947	2190419.01			
UL Underwriters Laboratories Inc.	UL 1977	E 45171			
UR Underwriters Laboratories Inc.	UL 1059	E45172			

Approvals for marine applications

Approval	Standard	Certificate Name
ABS American Bureau of Ship- ping	EN 60947	20-HG1941090-PDA

Downloads

Environmental Product Compliance	
Compliance Search	
Environmental Product Compliance 769-110	

Documentation

Bid Text			
769-110	19.02.2019	xml 3.20 KB	
769-110	04.10.2017	doc 25.00 KB	



CAD/CAE-Data	
CAD data	CAE data
2D/3D Models 769-110	EPLAN Data Portal 769-110
	WSCAD Universe 769-110
	ZUKEN Portal 769-110

1 Compatible Products
1.1 Optional Accessories
1.1.1 Cover
1.1.1.1 Cover



[Item No.: 769-436](#)  
Jumper cover; for 1-conductor female plugs; for 5 poles; gray

1.1.2 Ferrule			
1.1.2.1 Ferrule			
<a href="#">Item No.: 216-301</a> Ferrule; Sleeve for 0.25 mm² / AWG 24; insulated; electro-tin plated; yellow	<a href="#">Item No.: 216-302</a> Ferrule; Sleeve for 0.34 mm² / 22 AWG; insulated; electro-tin plated; light turquoise	<a href="#">Item No.: 216-201</a> Ferrule; Sleeve for 0.5 mm² / 20 AWG; insulated; electro-tin plated; electrolytic copper; acc. to DIN 46228, Part 4/09.90; white	<a href="#">Item No.: 216-101</a> Ferrule; Sleeve for 0.5 mm² / AWG 22; un-insulated; electro-tin plated; silver-colored
<a href="#">Item No.: 216-202</a> Ferrule; Sleeve for 0.75 mm² / 18 AWG; insulated; electro-tin plated; gray	<a href="#">Item No.: 216-102</a> Ferrule; Sleeve for 0.75 mm² / AWG 20; un-insulated; electro-tin plated; silver-colored	<a href="#">Item No.: 216-203</a> Ferrule; Sleeve for 1 mm² / AWG 18; insulated; electro-tin plated; red	<a href="#">Item No.: 216-103</a> Ferrule; Sleeve for 1 mm² / AWG 18; un-insulated; electro-tin plated
<a href="#">Item No.: 216-204</a> Ferrule; Sleeve for 1.5 mm² / AWG 16; insulated; electro-tin plated; black	<a href="#">Item No.: 216-104</a> Ferrule; Sleeve for 1.5 mm² / AWG 16; un-insulated; electro-tin plated; silver-colored	<a href="#">Item No.: 216-206</a> Ferrule; Sleeve for 2.5 mm² / AWG 14; insulated; electro-tin plated; blue	

1.1.3 Insulation stop		
1.1.3.1 Insulation stop		
<a href="#">Item No.: 769-470</a> Insulation stop; 0.08 - 0.2 mm² "s" (0.14 mm² "f-st"); 5 pieces/strip; white	<a href="#">Item No.: 769-471</a> Insulation stop; 0.25 - 0.5 mm²; 5 pieces/strip; light gray	<a href="#">Item No.: 769-472</a> Insulation stop; 0.75 - 1 mm²; 5 pieces/strip; dark gray

1.1.4 Jumper

1.1.4.1 Jumper



[Item No.: 769-402](#)  
Jumper; insulated; gray

1.1.5 Locking system

1.1.5.1 Locking system



[Item No.: 769-430](#)  
Locking lever; for female connectors; 1 part; Pin spacing 5 mm; 2-pole; gray



[Item No.: 769-431](#)  
Locking lever; for female connectors; 1 part; Pin spacing 5 mm; 2-pole; orange

1.1.6 Marking

1.1.6.1 Label



[Item No.: 210-805](#)  
Labels; for Smart Printer; permanent adhesive; 6 x 15 mm; 3000 pieces on roll; white



[Item No.: 210-805/000-002](#)  
Labels; for Smart Printer; permanent adhesive; 6 x 15 mm; 3000 pieces on roll; yellow

1.1.6.2 Marker



[Item No.: 2009-145](#)  
Mini-WSB Inline; for Smart Printer; 1700 pieces on roll; stretchable 5 - 5.2 mm; plain; snap-on type; white



[Item No.: 248-501](#)  
Mini-WSB marking card; as card; not stretchable; plain; snap-on type; white

1.1.6.3 Marking strip



[Item No.: 210-831](#)  
Marking strips; on reel; 2.3 mm wide; plain; Self-adhesive; white



[Item No.: 210-832](#)  
Marking strips; on reel; 3 mm wide; plain; Self-adhesive; white



[Item No.: 210-834](#)  
Marking strips; on reel; 5 mm wide; plain; Self-adhesive; white

1.1.7 Protective warning marker

1.1.7.1 Cover



[Item No.: 280-415](#)  
Protective warning marker; for 5 terminal blocks; with high-voltage symbol, black; yellow



1.1.8 Strain relief

1.1.8.1 Strain relief



**Item No.: 769-1610**  
Strain relief housing; for female and male connectors; 2 parts; Pin spacing 5 mm; 10-pole; gray



**Item No.: 769-414**  
Strain relief plate; for female and male connectors; 1 part; Pin spacing 5 mm; 10- to 15-pole; gray

1.1.9 Test and measurement

1.1.9.1 Testing accessories



**Item No.: 210-136**  
Test plug; 2 mm Ø; with 500 mm cable; red

1.1.10 Tool

1.1.10.1 Operating tool



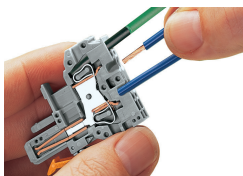
**Item No.: 210-490**  
Operating tool



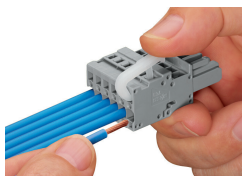
**Item No.: 769-434**  
Operating tool; made of insulating material; 1-way; loose; white

Installation Notes

Conductor termination



**CAGE CLAMP® connection**  
Female plug: Inserting/removing a conductor via operating tool. Operation 90° to conductor is also possible. With ferruled conductors, it is necessary to use a terminal block one size smaller than the conductor's nominal cross-section.

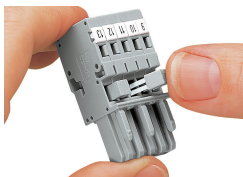


Operating lever  
Inserting a conductor – side-entry wiring (example shows a female plug).

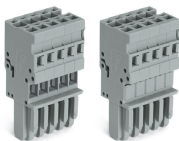


Operating tool  
Inserting a conductor – side-entry wiring (example shows a female plug). With ferruled conductors, it is necessary to use a terminal block one size smaller than the conductor's nominal cross-section.

Commoning



Commoning 1-conductor female plugs via miniature adjacent jumpers.



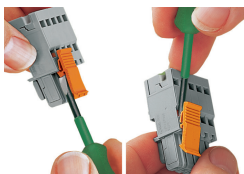
Jumper cover for 1-conductor female plugs

## Coding



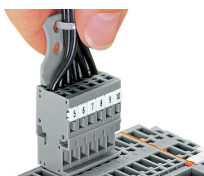
Coding a female plug by removing coding finger(s) via cutting tool. Do not remove the first and last coding fingers or use an additional locking lever.

## Locking system



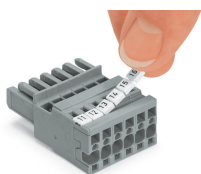
Locking/releasing a lever.

## Strain relief



Removing a female plug via conductor bundle provided with strain relief plate.

## Marking



Labeling a female plug with CAGE CLAMP® connection via Mini-WSB Quick Markers.