



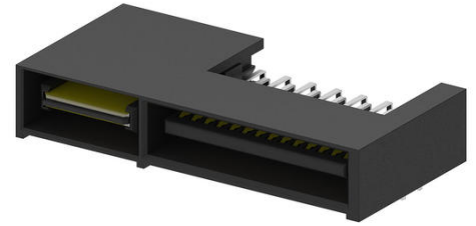
Part Number : [459852153](#)

Product Description : EXTreme LPHPower Plug, Right-Angle, 2 Power Contacts, 28 Signal Contacts, Select Gold (Au) Plating, for 1.57mm Thick PC Board

Series Number : 45985

Status : Active

Product Category : Board-to-Board Connectors



Documents and Resources

Drawings

[459852153_sd.pdf](#)

3D Models and Design Files

[STEP AP242](#)

[SOLIDWORKS](#)

[Creo](#)


[Symbol and Footprint \(Multi-Format\)](#)

Specifications

[PS-45984-001-001.pdf](#)

Product Environment Compliance

Compliance

GADSL/IMDS	Not Relevant
China RoHS	 per SJ/T 11365-2006
EU ELV	Not Relevant
Low-Halogen Status	Low-Halogen per IEC 61249-2-21
REACH SVHC	Not Contained per D(2025)7771-DC (04 Feb 2026)
EU RoHS	Compliant per EU 2015/863

[Compliance Statements](#)

- EU RoHS
- REACH SVHC

- Low-Halogen

Industry Documents

- IPC 1752A Class C
- IPC 1752A Class D
- Molex Product Compliance Declaration
- IEC-62474
- chemSHERPA (xml)

Substances of Interest

- PFAS

EU RoHS Certificate of Compliance

Additional Product Compliance Information

Part Details

General

Status	Active
Category	Board-to-Board Connectors
Series	45985
Description	EXTreme LPHPower Plug, Right-Angle, 2 Power Contacts, 28 Signal Contacts, Select Gold (Au) Plating, for 1.57mm Thick PC Board
Application	Board-to-Board, Power, Signal
Component Type	Plug
Product Name	EXTreme LPHPower
UPC	195842344136

Agency

CSA	LR19980
UL	E29179

Electrical

Current - Maximum per Contact	30.0A
Voltage - Maximum	250V AC (RMS)/DC (Power), 30V DC (Signal)

Physical

Breakaway	No
Circuits (Loaded)	30
Circuits (maximum)	30
Color - Resin	Black
Durability (mating cycles max)	250
First Mate / Last Break	No
Flammability	94V-0
Glow-Wire Capable	No
Guide to Mating Part	No
Keying to Mating Part	No
Lock to Mating Part	No
Material - Metal	High Performance Alloy (HPA)
Material - Plating Mating	Gold
Material - Plating Termination	Tin
Material - Resin	High Temperature Thermoplastic
Net Weight	4.418/g
Number of Rows	2
Orientation	Right Angle
Packaging Type	Tray
PCB Locator	No
PCB Retention	No
PCB Thickness - Recommended	1.57mm
PC Tail Length	2.90mm
Pitch - Mating Interface	1.27mm, 12.00mm
Pitch - Termination Interface	1.27mm, 2.00mm, 2.50mm
Plating min - Mating	0.762µm
Plating min - Termination	3.810µm
Polarized to Mating Part	Yes
Polarized to PCB	Yes
(p)ower-(s)ignal Configuration	2p - 28s
Shrouded	Shrouded
Stackable	No
Temperature Range - Operating	-40° to +105°C
Termination Interface Style	Through Hole

Mates With / Use With

Mates with Part(s)

Description	Part Number
EXTreme LPHPower Right-Angle PCB Receptacles	<u>45984</u>

This document was generated on Apr 21, 2026