



Wireless Technology to Control and Monitor Anything from Anywhere™

# SYNAPSE Portal

## Wireless Application Development Environment

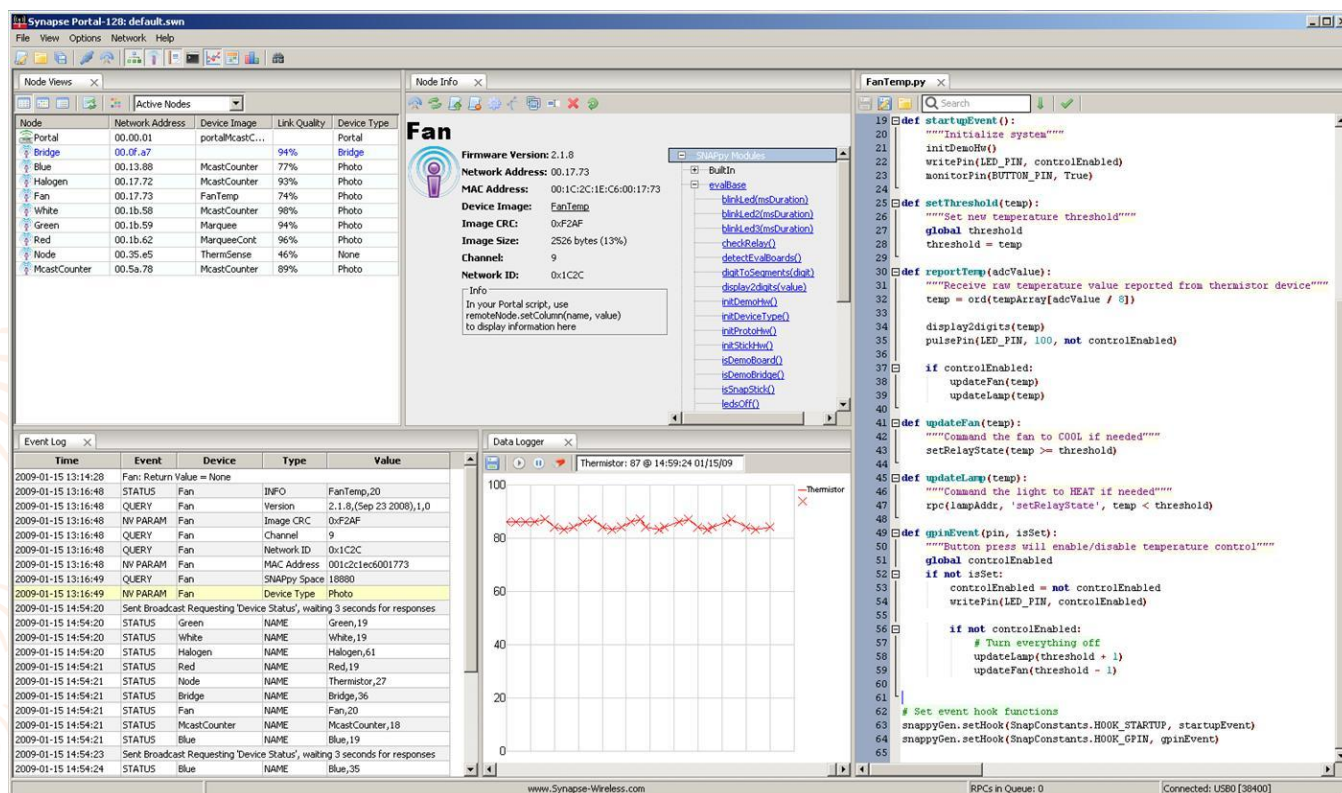
**Fast, real time view of your SNAP network**

**Runs on Windows (2000, XP, Vista) or Linux**

**Configuration and monitoring of your devices**

**Customized data logging with native Python scripts**

**Interactive, rapid application development – wirelessly!**



Portal takes you beyond traditional network commissioning tools by giving you an end-to-end view into your wireless application. Implement the functionality you need one step at a time – dynamically, interactively, wirelessly. Portal is with you every step of the way, providing complete access to all functions in every node on your SNAP® network. Want to send an email when a remotely monitored threshold is exceeded? Portal®

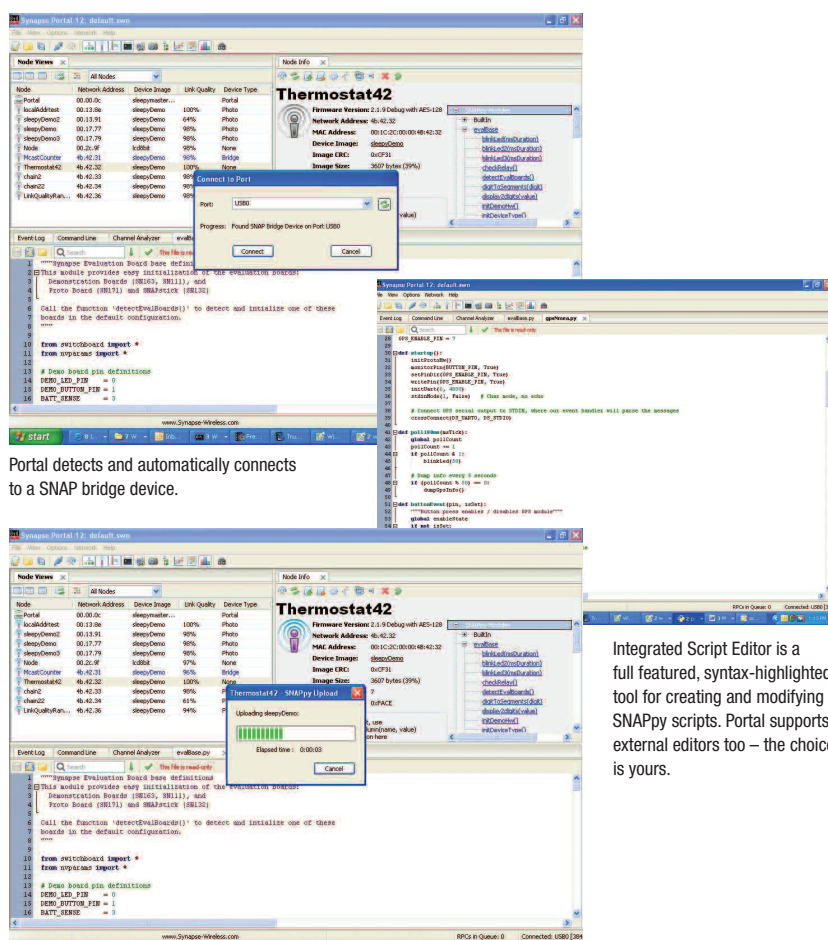
provides email logging of user-defined events. But that's just the tip of the iceberg. Through Portal, remote devices can access the full power of the PC – opening up the potential to virtually unlimited application functionality. As a bridge between the SNAP network and the PC, Portal provides a simple and flexible Python-based interface. Remote nodes can invoke Python functions in Portal using built-in SNAPpy™ RPC calls.



Wireless Technology to Control and Monitor Anything from Anywhere™

# SYNAPSE Portal

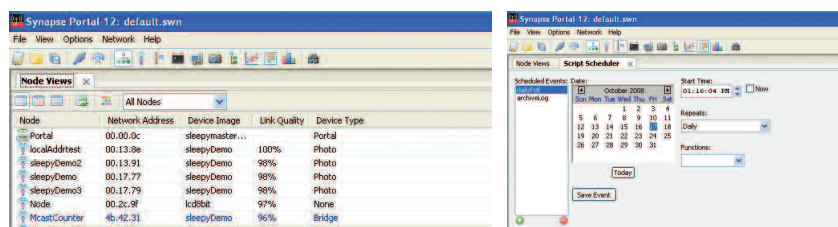
## Wireless Application Development Environment



Portal detects and automatically connects to a SNAP bridge device.

Integrated Script Editor is a full featured, syntax-highlighted tool for creating and modifying SNAPPy scripts. Portal supports external editors too – the choice is yours.

Upload new application functionality over the air – the ultimate fast development cycle.



Configurable Node Views allow easy management, even with thousands of devices.

Portal's Script Scheduler allows recurring calendar-time events to be controlled from a central management location.

### Portal Features

- Comprehensive administration tool for SNAP networks
- Participates as a full-fledged peer on the network
- Runs on Windows (2000, XP, Vista) or Linux
- Invoke (RPC) script functions on any device in the network
- Remote nodes can invoke (RPC) user-defined scripts within Portal® itself
- Quick and easy interface for modifying and uploading scripts
- Syntax-highlighted Python™ editor for developing SNAPPy™ scripts
- Connect to a SNAP Gateway™ over the Internet or TCP/IP LAN
- SNAPPy application scripts running within Portal have full access to the PC's resources
- Event Log with timestamps and filtering
- Automatically scans for Synapse USB and RS-232 devices
- Intercepts STDOUT of selected remote devices for easy development / debug
- Runtime error detection highlights the line of script code where the error occurs
- Graphical firmware upgrade manager
- Powerful command-line provides full access to local and remote services
- Node configuration editor
- Script scheduler allows actions to be triggered from calendar-time events
- Graphical "Data Logger" view can be configured to display multiple user-defined process values
- Channel analyzer to find ideal channel for network
- Channel scanner to detect new or un-configured nodes

### Part Selection

Part No.	Software	Nodes Supported
SW24006	In EK2100 kit	6
SW24012	In EK2500 kit	12
SW24000	Portal	Unlimited

*For OEM License, Call Synapse Sales*

**SYNAPSE Wireless, Inc.** 132 Export Circle, Huntsville, Alabama 35806  
877 982-7888 · synapse-wireless.com