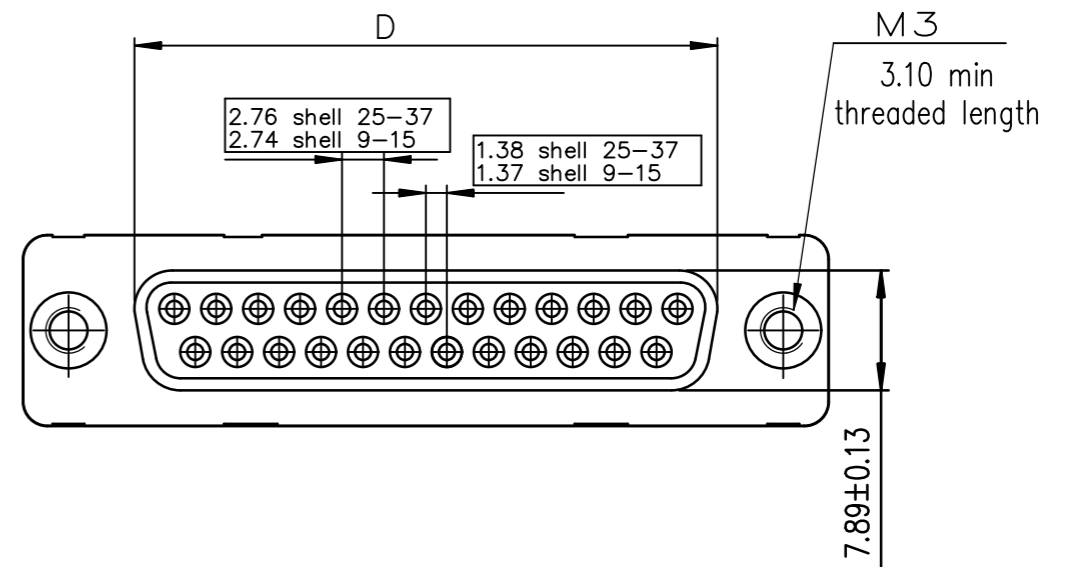
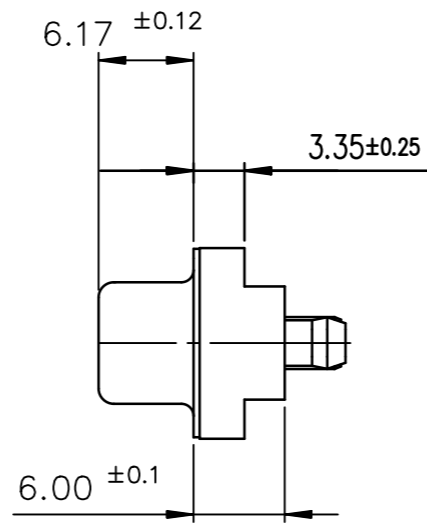
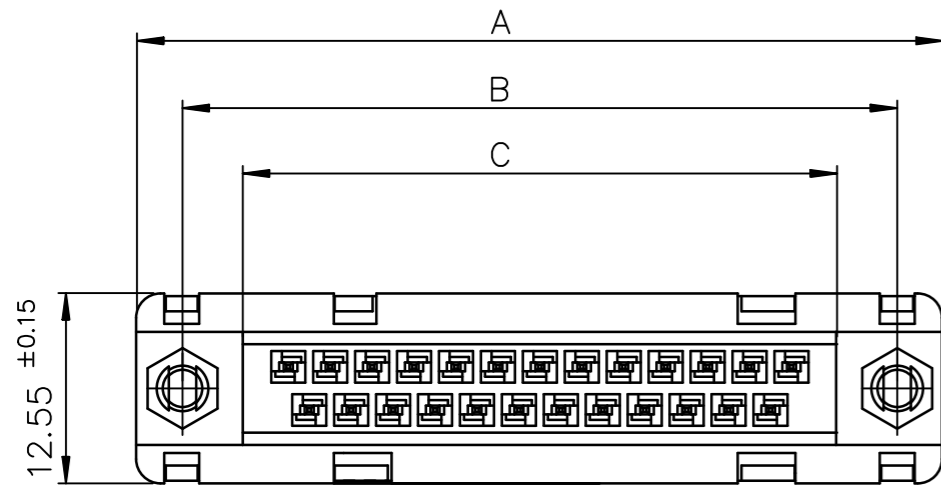


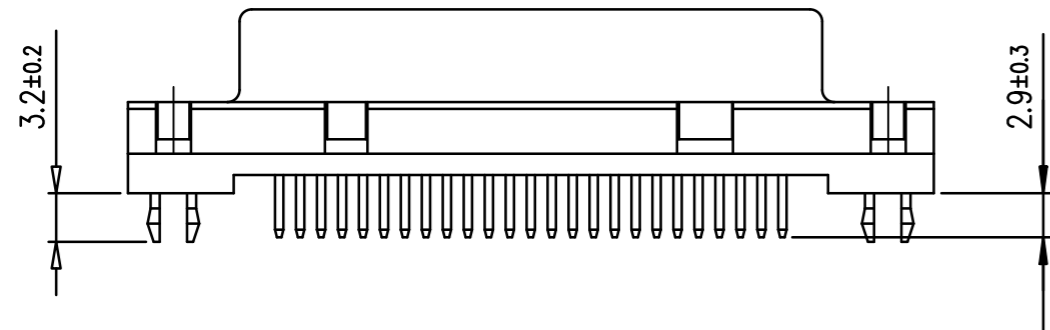
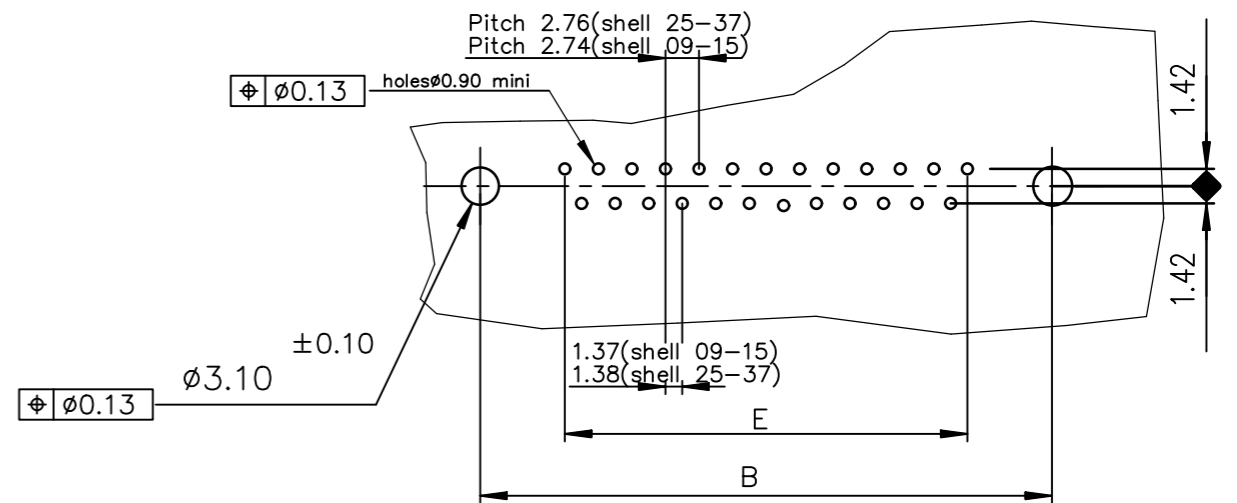


© 2016 AFCI

Amphenol
FCI



PC card drilling dimensions(after plating)
(thickness 1.60±0.20mm)



LEAD FREE PART NUMBER

SHELL	A±0.38	B±0.12	C±0.10	D±0.25	E±0.07	PART NUMBER
09	30.81	24.99	16.96	16.21	10.96	D09S24A.GL00LF
15	39.14	33.32	25.18	24.54	19.18	D15S24A.GL00LF
25	53.03	47.04	39.12	38.25	33.12	D25S24A.GL00LF
37	69.32	63.50	55.68	54.71	49.68	D37S24A.GL00LF

4 - 200 MATING CYCLES
6 - 500 MATING CYCLES

GENERAL CHARACTERISTICS AND ROHS INFORMATIONS:
SEE DRAWING C01-8646-0000

mat'l. code		surface		tolerance		projection		product family	
-		ISO 1302 ✓		ISO 406 ISO 1101				D-SUB	
ltr	ecn no	dr	date	tolerances unless otherwise specified		MM		title	
H	ELX-I-281390	GM	2026-03-11	angles	linear	.0±0.3		FEMALE DELTA-D	
				0°±2'		.00±0.10		STRAIGHT, SOLDER TYPE	
						.000±0.005		scale 2:1	
		dr	JOUBERT	1999-10-18				dwg no	
		enr	GREGAR M	2026-03-11				sheet 1 of 1	
		chr	GREGAR M	2026-03-11				size	
		app	ALEX BABU	2026-03-11				A3	
sheet index		revision	J					type	
1		sheet	1					Product Customer Drawing	