

## Stainless Medium Conductive Thread - 3 ply - 18 meter/60 ft

PRODUCT ID: 641

IN STOCK

1

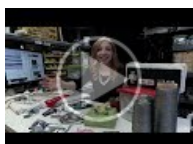
ADD TO CART

1-9

10-99

100+

ADD TO WISHLIST

[DESCRIPTION](#)[TECHNICAL DETAILS](#)

## DESCRIPTION

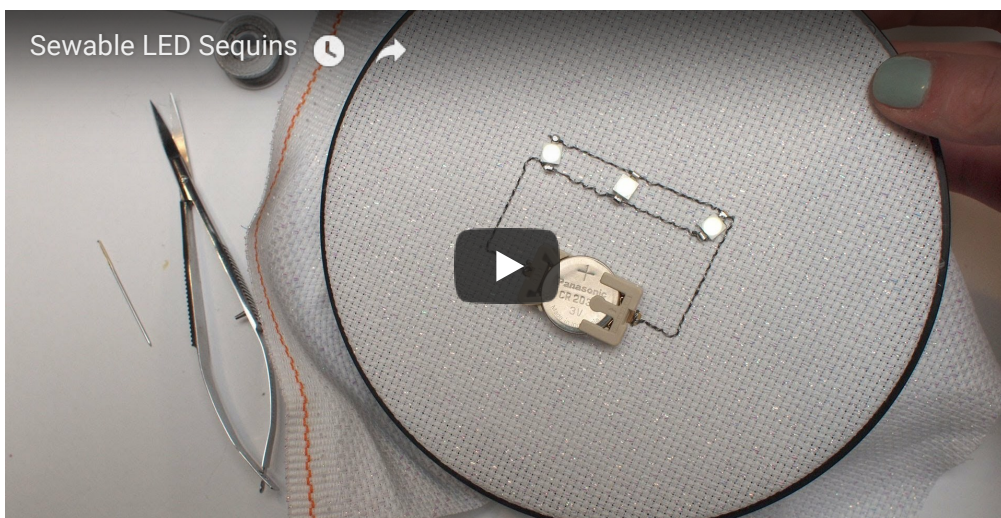
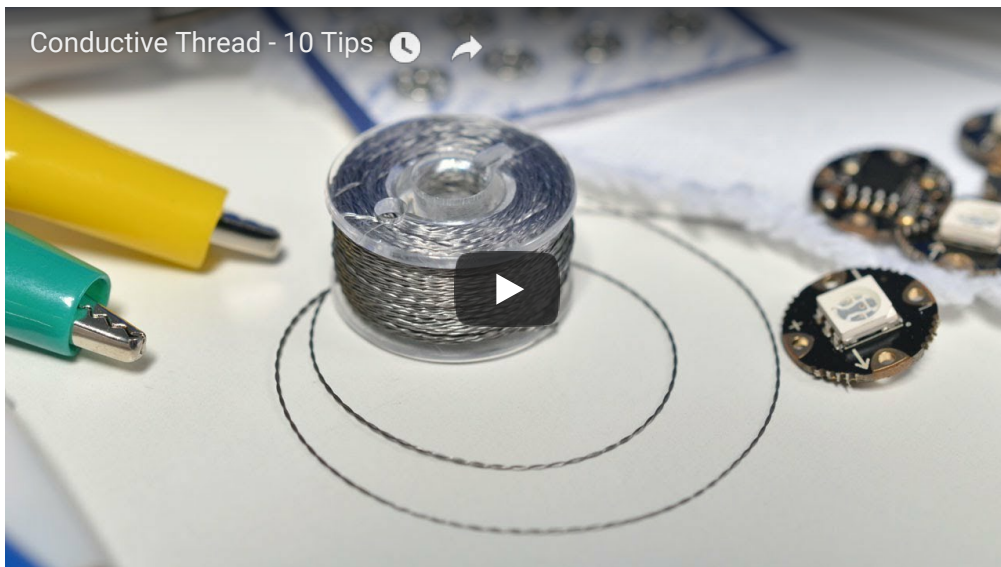
After months of searching, we finally have what we consider to be the ultimate conductive thread. It's thin, strong, smooth, and made completely of 316L stainless steel. Once you start working with this thread you'll quickly agree its optimal for any wearables work!

This thread is 3 ply, thicker than every day polyester or cotton thread but still thin enough to be sewn by hand in medium-eye needles. This may be sew-able by a sewing machine that can handle 'heavy' thread. Because it is strong and smooth, its ideal for any wearable/e-textile

project. It also has fairly low resistivity, 10 ohms per foot so you can use it to drive LEDs and other electronic components that use under ~100mA.

Because it is made of stainless steel fibers, it will not oxidize like silver does: your projects will not 'stop working' because of oxidation after a few months and its safe to wash. However, this thread is a little 'stiff', it feels a little like 'waxed thread' and is not ideal for making iPhone-compatible gloves. [If you want to sew conductive thread into the pads of gloves, check out our thin conductive yarn!](#)

Comes in a small metal (or plastic) bobbin with 18 meters/60 feet wound on. [We also have a version of this thread with only 2 ply.](#)



## TECHNICAL DETAILS

- Measures: 0.25mm thick, 3 ply thread, 0.83 ohm per inch



## LEARN



### [Sewable NeoPixels](#)

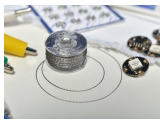
Addressable, chainable, delectable!



### [Flora Snaps](#)

Easily removable snap-on

Flora!



[Conductive Thread](#)  
Sewing with steel!



[Flora GPS Jacket](#)  
Location-aware outerwear



[LED Ampli-Tie](#)  
Wearable VU meter necktie with Flora



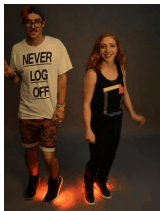
[Sparkle Skirt](#)  
Stitch a circuit that lights up when you move



[Chameleon Scarf](#)  
Changes color to match!



[Pac Man Pixel Suspenders](#)  
Blinken-braces!



[Firewalker LED Sneakers](#)  
Burn up the dance floor in these red-hot kicks!



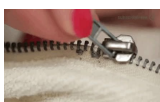
[Shop Tips & Tricks](#)  
Making manufacturing easy



[Introducing Gemma](#)  
Introducing Adafruit's mini wearable microcontroller



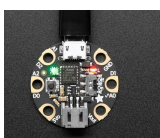
[GPS Logging Dog Harness](#)  
Get yer log on



[Zipper Switch](#)  
Conductive thread zip-trigger



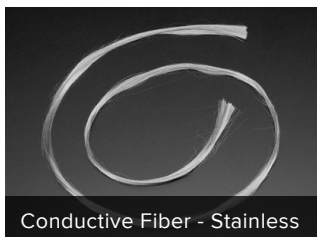
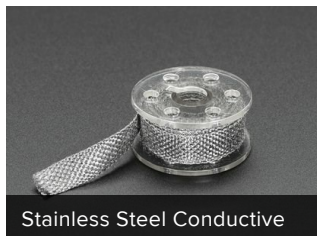
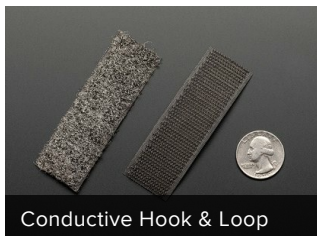
[Textile Potentiometer Hoodie](#)  
All-sewn slide-sensor circuit



[Adafruit Gemma M0](#)  
The Gemma M0 will super-charge your wearables! Small, light, and it's easy to use, so



## MAY WE ALSO SUGGEST...



## DISTRIBUTORS [EXPAND TO SEE DISTRIBUTORS](#)

[CONTACT](#)

[SUPPORT](#)

[DISTRIBUTORS](#)

[EDUCATORS](#)

[JOBS](#)

[FAQ](#)

[SHIPPING & RETURNS](#)

[TERMS OF SERVICE](#)

[PRIVACY & LEGAL](#)

[ABOUT US](#)

ENGINEERED IN NYC Adafruit®

*"Far and away the best prize that life has to offer is the chance to work hard at work worth doing"* -  
**Theodore Roosevelt**



4.9 ★★★★★  
Google  
Customer Reviews