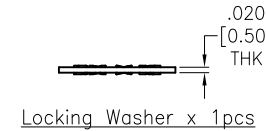
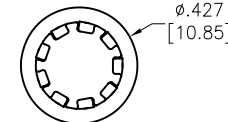
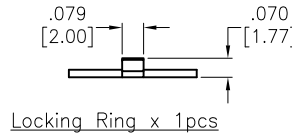
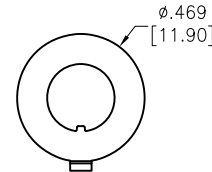
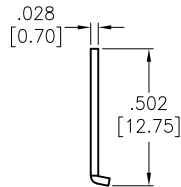
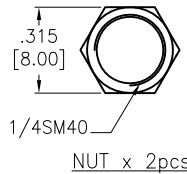
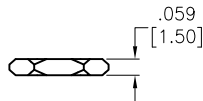
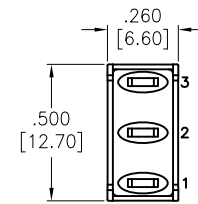
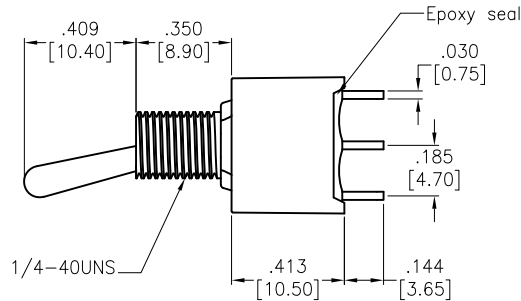
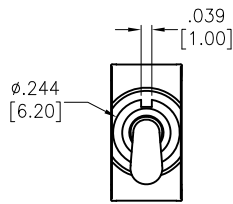
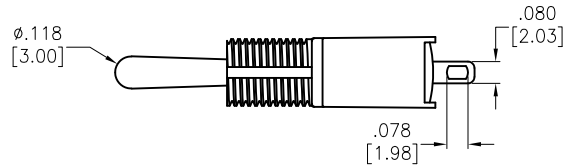


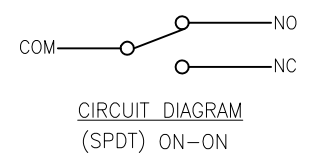
Rev	AWO #	Description	Date	Appr
-		RELEASED	9/27/21	

APPROVED: _____

DATE: _____ TITLE: _____



SW-T2-2B-A-T1-X-03
 S=Contact Silver Plated
 G=Contact Gold Plated



SPECIFICATIONS:

Material:
 Movable contact: Copper Alloy, Silver plated
 Terminals: Silver plated with outer layer in Gold plating
 Electrical:
 Rating: 5 Amps with resistive load @ 125VAC or 28VDC
 2 Amps with resistive load @ 250VAC
 Contact resistance: 10 mohms max initial
 Insulation resistance: 1000 Mohms min
 Dielectric withstanding voltage: 1500V RMS @ sea level
 Electrical life: 50,000 make and break cycles at full load
 Temperature Rating:
 Operating temperature: -30°C to +85°C
 Environmental:
 IP Class: IP67
 Lead free, RoHS compliant



UNLESS OTHERWISE SPECIFIED ALL DIMENSIONS ARE INCHES [MM]. TOLERANCES: EXCEPT AS NOTED			909 Rahway Avenue, Union, NJ 07083 Phone: 908-687-5000 Fax: 908-687-5710																																				
<table border="1"> <tr> <th colspan="2">INCHES</th> <th colspan="2">HOLES</th> </tr> <tr> <td>.X</td> <td>± .10</td> <td>ØX</td> <td>± .10</td> </tr> <tr> <td>.XX</td> <td>± .020</td> <td>ØXX</td> <td>± .015</td> </tr> <tr> <td>.XXX</td> <td>± .015</td> <td>ØXXX</td> <td>± .010</td> </tr> </table>			INCHES		HOLES		.X	± .10	ØX	± .10	.XX	± .020	ØXX	± .015	.XXX	± .015	ØXXX	± .010	<table border="1"> <tr> <td>TITLE</td> <td colspan="3">MINIATURE TOGGLE SWITCH, SPDT, ON-ON, SOLDER TYPE</td> </tr> <tr> <td>DRAWN</td> <td>JJ</td> <td>9/27/21</td> <td></td> </tr> <tr> <td>CHECKED</td> <td>RC</td> <td>9/27/21</td> <td></td> </tr> <tr> <td>APPROVED</td> <td></td> <td></td> <td></td> </tr> <tr> <td colspan="4">THIS DRAWING CONTAINS INFORMATION THAT IS PROPRIETARY AND SHOULD NOT BE USED WITHOUT PRIOR WRITTEN PERMISSION FROM ADAM TECH</td> </tr> </table>		TITLE	MINIATURE TOGGLE SWITCH, SPDT, ON-ON, SOLDER TYPE			DRAWN	JJ	9/27/21		CHECKED	RC	9/27/21		APPROVED				THIS DRAWING CONTAINS INFORMATION THAT IS PROPRIETARY AND SHOULD NOT BE USED WITHOUT PRIOR WRITTEN PERMISSION FROM ADAM TECH		
INCHES		HOLES																																					
.X	± .10	ØX	± .10																																				
.XX	± .020	ØXX	± .015																																				
.XXX	± .015	ØXXX	± .010																																				
TITLE	MINIATURE TOGGLE SWITCH, SPDT, ON-ON, SOLDER TYPE																																						
DRAWN	JJ	9/27/21																																					
CHECKED	RC	9/27/21																																					
APPROVED																																							
THIS DRAWING CONTAINS INFORMATION THAT IS PROPRIETARY AND SHOULD NOT BE USED WITHOUT PRIOR WRITTEN PERMISSION FROM ADAM TECH																																							
SIZE	PART NO.	REV.																																					
X	SW-T2-2B-A-T1-X-03	-																																					
REF:	S00198T	SCALE:	NTS	SHEET 1 OF 1																																			