



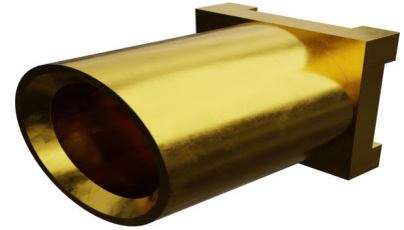
**Part Number :** [734130040](#)

**Product Description :** SSMCX Jack, Straight, PCB Receptacle, Surface Mount, Brass Body, Gold (Au) Plated, Tray, 50 Ohms

**Series Number :** 73413

**Status :** Active

**Product Category :** RF / Coaxial Connectors



---

## Documents and Resources

### Drawings

[734130040 sd.pdf](#)

[734130040PKG-000.pdf](#)

### 3D Models and Design Files

[STEP AP242](#)


[SOLIDWORKS](#)

[Creo](#)

---

## Product Environment Compliance

### Compliance

|                    |   |
|--------------------|---|
| GADSL/IMDS         | Not Relevant  |
| China RoHS         |  per SJ/T 11365-2006 |
| EU ELV             | Not Relevant  |
| Low-Halogen Status | Low-Halogen per IEC 61249-2-21  |
| REACH SVHC         | Contains Lead per D(2023)3788-DC (14 Jun 2023)  |
| EU RoHS            | Compliant with Exemption 6(c) per EU 2015/863   |

### [Compliance Statements](#)

- EU RoHS
- REACH SVHC
- Low-Halogen

### [Industry Documents](#)

- IPC 1752A Class C
- IPC 1752A Class D
- Molex Product Compliance Declaration
- IEC-62474
- chemSHERPA (xml)

#### Substances of Interest

- PFAS

#### EU RoHS Certificate of Compliance

#### Additional Product Compliance Information

---

## Part Details

### General

|              |  |
|--------------|--|
| Status       | Active   |
| Category     | RF / Coaxial Connectors  |
| Series       | 73413  |
| Description  | SSMCX Jack, Straight, PCB Receptacle, Surface Mount, Brass Body, Gold (Au) Plated, Tray, 50 Ohms |
| Application  | RF   |
| Product Name | SSMCX  |
| Style        | PCB  |
| Type         | Ultra-microminiature   |
| UPC          | 822350007351   |

### Electrical

|                 |                             |
|-----------------|-----------------------------|
| Frequency       | 6 GHz                       |
| Impedance       | 50Ω                         |
| Power / Voltage | VOLTAGE: 170 Vrms@Sea Level |

### Physical

|                       |          |
|-----------------------|----------|
| Cable Attachment      | N/A      |
| Gender                | Jack     |
| Keying to Mating Part | N/A      |
| Net Weight            | 0.071/g  |
| Orientation           | Straight |

|                             |               |
|-----------------------------|---------------|
| Packaging Type              | Tray          |
| Panel Mount                 | No            |
| Panel Mount Method          | N/A           |
| PCB Mounting                | Surface Mount |
| PCB Thickness - Recommended | N/A           |
| Reverse Polar               | No            |
| Wire/Cable Type             | N/A           |

### Solder Process Data

|                              |        |
|------------------------------|--------|
| Max-Duration                 | 10     |
| Lead-Free Process Capability | REFLOW |
| Max-Cycle                    | 2      |
| Max-Temp                     | 260    |

---

This document was generated on Apr 30, 2026