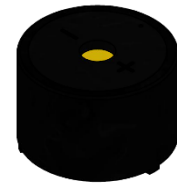




# PUIaudio



Data Sheet

AI-3035-TT-12V-R

## Features:

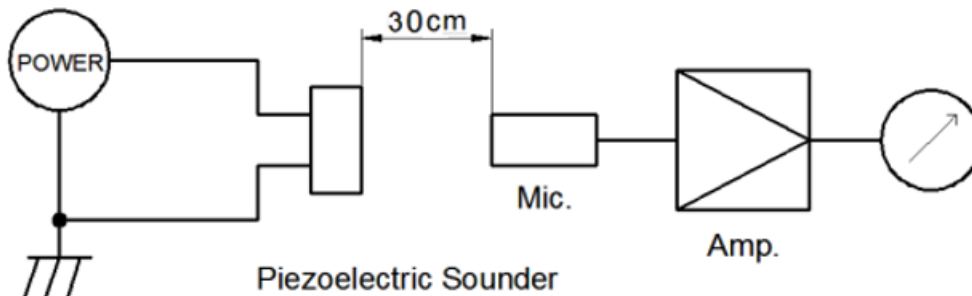
- High-Output Piezo Indicator
- 12VDC rated, 3500Hz
- Top-Firing Thru-Hole Type

## Specifications

Parameters	Values	Units
Rated Voltage	12	VDC
Operating Voltage Range	3 ~ 20	VDC
Current Draw at Rated Voltage	12	mA
Minimum SPL @ 10cm	104	dBA
Resonant Frequency	3,500 ± 500	Hz
Tone or Pulse Rate	Continuous	-
Housing Material	PBT	-
Terminal Material	Sn Plated Copper	-
Weight	9.3	Grams
Acceptable Soldering Methods	Hand Solder, Wave Solder	-
Environmental Compliances	RoHS/REACH	7c-1
Storage Temperature	-40 ~ +90	°C
Operating Temperature	-40 ~ +85	°C

## Measurement Method (Temperature: 20±2°C; Relative Humidity: 40% ~ 70%)

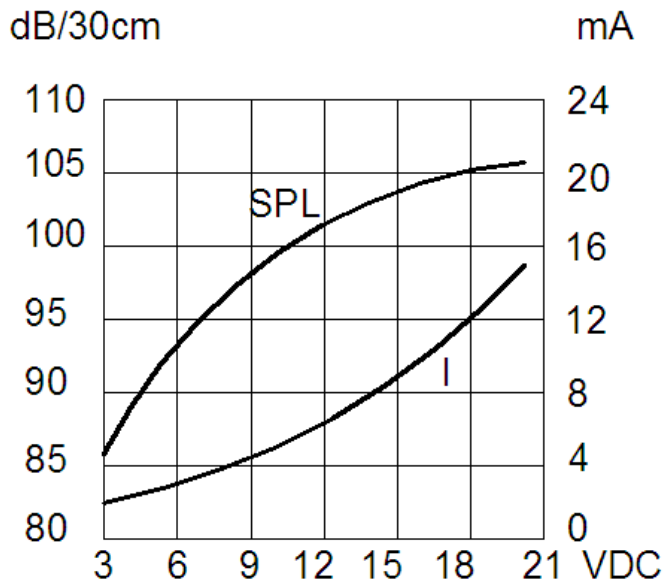
Standard Test Fixture (Distance: 30cm, 12VDC)



MIC: ND10 Sound Meter or equivalent

DC Power Supply: QJ6003S or equivalent

## Typical SPL vs Input Voltage

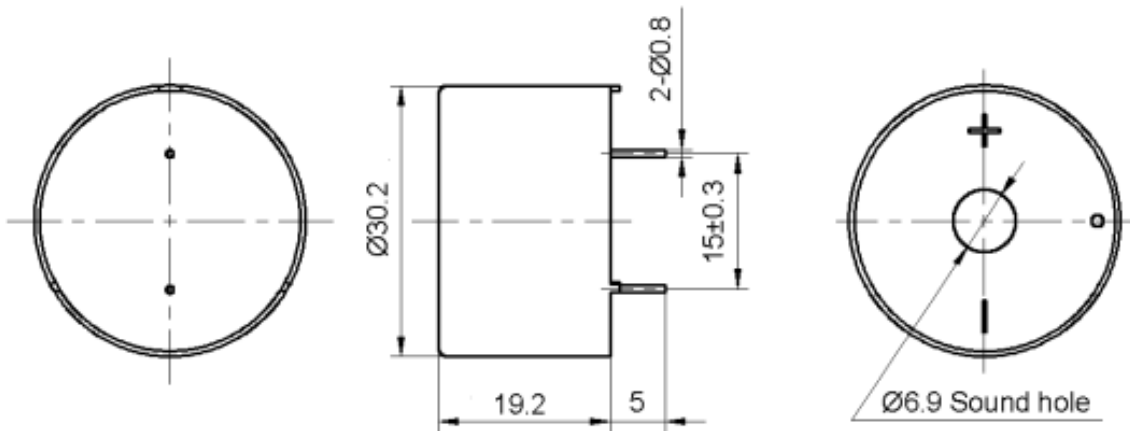


## Reliability Testing

Type of Test	Test Specifications
High Temperature Test	96 hours at $90\pm 2^{\circ}\text{C}$ , then let it rest for 2 to 4 hours
Low Temperature Test	96 hours at $-40\pm 2^{\circ}\text{C}$ , then let it rest for 2 to 4 hours
Humidity Test	96 hours at $40\pm 2^{\circ}\text{C}$ with relative humidity at $93\pm 2\%$ , then let it rest for 2 to 4 hours
Temperature Cycle Testing	5 cycles consisting of $-40\pm 2^{\circ}\text{C}$ , for 30 minutes $+20\pm 2^{\circ}\text{C}$ , for 15 minutes $+90\pm 2^{\circ}\text{C}$ , for 30 minutes $+20\pm 2^{\circ}\text{C}$ , for 15 minutes then let it rest for 2 to 4 hours
Vibration Test	10 to 55 Hz and then 55 to 10Hz under single amplitude of 1.52mm in 1 minute. The vibration test shall consist of 2 hours per plane in each of the three mutually perpendicular planes for a total time of 6 hours.
Shock Test	If applicable, describe conditions of test.
Drop Test	Drop from the height of 70cm onto 10mm thick wooden board 3 times in 3 axial directions(x, y and z) Total of 9 times
Load Test	If applicable, state the conditions of the load test

**After the test, part shall meet specifications. SPL shall be within  $\pm 10\text{dB}$**

## Dimensions



## Packaging

50 pcs per box

20 boxes per carton

Total = 1000 pcs carton

### Specifications Revisions

Revision	Description	Date	Approved
A	RELEASED FROM ENGINEERING	12/13/2018	
B	Added Pin Length to drawing	8/19/2024	JD
C	Updated SPL	2/9/2026	JL

#### Note:

- Unless otherwise specified:
  - All dimensions are in millimeters.
  - Default tolerances are  $\pm 0.5\text{mm}$  and angles are  $\pm 3^\circ$ .
- Specifications subject to change or withdrawal without notice.