



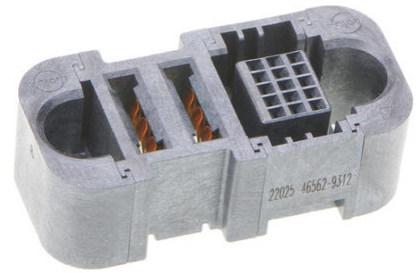
Part Number : [465629312](#)

Product Description : EXTreme Ten60Power Vertical Receptacle with Side Guides, 2 DC Power Circuits, 15 Signal Circuits, Press Fit Tail

Series Number : 46562

Status : Active

Product Category : Board-to-Board Connectors



Documents and Resources

Drawings

[465629312_sd.pdf](#)

[465621001-PK-000.pdf](#)

3D Models and Design Files

[STEP AP242](#)

[SOLIDWORKS](#)

[Creo](#)

[Symbol and Footprint \(Multi-Format\)](#)


Specifications

[PS-46436-100-001.pdf](#)

[464361000-TS-000.pdf](#)

Product Environment Compliance

Compliance

GADSL/IMDS	Compliant with Exemption 44; 34; 33
China RoHS	 per SJ/T 11365-2006
EU ELV	Not Relevant
Low-Halogen Status	Low-Halogen per IEC 61249-2-21
REACH SVHC	Not Contained per D(2025)7771-DC (04 Feb 2026)
EU RoHS	Compliant per EU 2015/863

Compliance Statements

- EU RoHS
- REACH SVHC
- Low-Halogen

Industry Documents

- IPC 1752A Class C
- IPC 1752A Class D
- Molex Product Compliance Declaration
- IEC-62474
- chemSHERPA (xml)

Substances of Interest

- PFAS

EU RoHS Certificate of Compliance

Additional Product Compliance Information

Part Details

General

Status	Active
Category	Board-to-Board Connectors
Series	46562
Description	EXTreme Ten60Power Vertical Receptacle with Side Guides, 2 DC Power Circuits, 15 Signal Circuits, Press Fit Tail
Application	Board-to-Board, Power, Signal
Comments	See Product Specification for details
Component Type	Receptacle
Keyword	Ten60
Product Name	EXTreme Ten60Power
UPC	195842673007

Agency

CSA	LR19980
UL	E29179

Electrical

Current - Maximum per Contact	60.0A
-------------------------------	-------

Grounding to PCB	No
Voltage - Maximum	600V AC / 250V DC

Physical

Circuits (Loaded)	17
Circuits (maximum)	17
Color - Resin	Black
Durability (mating cycles max)	200
Flammability	94V-0
Glow-Wire Capable	No
Guide to Mating Part	Side, Yes
Keying to Mating Part	No
Lock to Mating Part	No
Material - Metal	High Conductivity Copper
Material - Plating Mating	Gold
Material - Plating Termination	Tin
Material - Resin	Liquid Crystal Polymer (LCP)
Net Weight	10.118/g
Number of Rows	1, 5
Orientation	Vertical
Packaging Type	Tray
PCB Locator	No
PCB Retention	Yes
PCB Thickness - Recommended	1.58mm
PC Tail Length	2.50mm, 3.28mm
Pitch - Mating Interface	2.00mm, 5.50mm
Plating min - Mating	0.762µm
Plating min - Termination	2.540µm
Polarized to Mating Part	Yes
Polarized to PCB	Yes
(p)ower-(s)ignal Configuration	2p - 15s
Stackable	No
Temperature Range - Operating	-40° to +105°C
Termination Interface Style	Through Hole - Compliant Pin

Mates With / Use With

Mates with Part(s)

Description	Part Number
EXTreme Ten60Power Right-Angle Plug with Side Guides, 2 DC Power Circuits, 15 Signal Circuits, Press Fit Tail	<u>464379312</u>

This document was generated on Apr 30, 2026