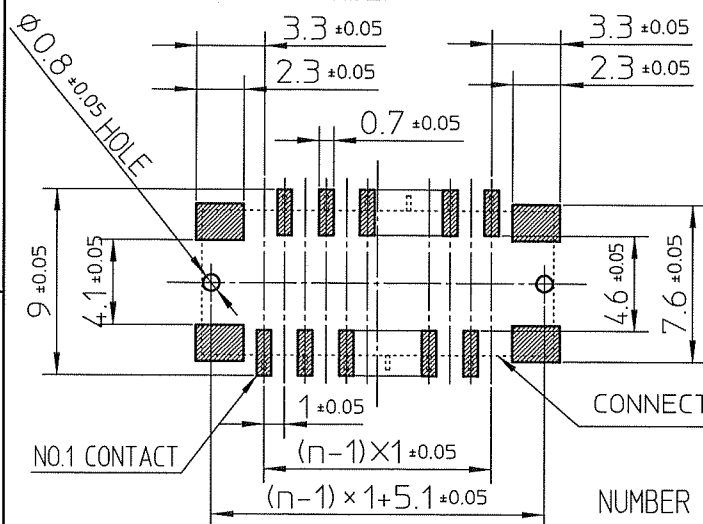


PT. NO.	PARTS NAME	MATERIAL	Q'TY	NOTE
1	HOUSING	GLASS FILLED THERMOPLASTIC RATED.(UL94V-0)	1	COLOR:BRACK
2	CONTACT	PHOSPHOR BRONZE	n	PLATING CONTACT AREA:GOLD OVER NICKL TERMINAL AREA:TIN (LEAD FREE)
3	MOUNTING PLATE	BRASS	2	PLATING:TIN (LEAD FREE)

n:NO. OF CONTACTS

RECOMMENDED PC BOARD LAYOUT (COMPONENT SIDE)



NOTE

- 1.This connector is symmetric for X,Y axis. As a result, It is possible to locate in emboss cavity even if rotated condition.
- 2.Flatness for contact terminal and mounting plate must be within 0.1.
- 3.This product meets European Union Directives and other country regulations as described in GS-22-008.

NUMBER OF CONTACTS : 10 TO 16 , ONLY EVEN POS.

mat'l. code				surface ISO 1302 ✓		tolerance ISO 406 ISO 1101		projection		product family 590F			
ltr ecn no dr date				tolerances unless otherwise specified									
A J07-0021 M.K Jan.25,07				angles linear ±0.3									
				dr K.Higuchi		Jan.25,07				title FLOATING BOARD TO BOARD PLUG CONNECTOR (GOLD PLATING AND LEAD FREE) (CAT.No. BTFW__P-3SBTADLF)			
				enrg M.Koga		Jan.25,07				dwg no JSA97218 sheet 1 of 2 size A4			
				chr K.Higuchi		Jan.25,07				type Product Customer Drawing			
sheet index				revision sheet		A 1		A 2		Rev A			

form: A4

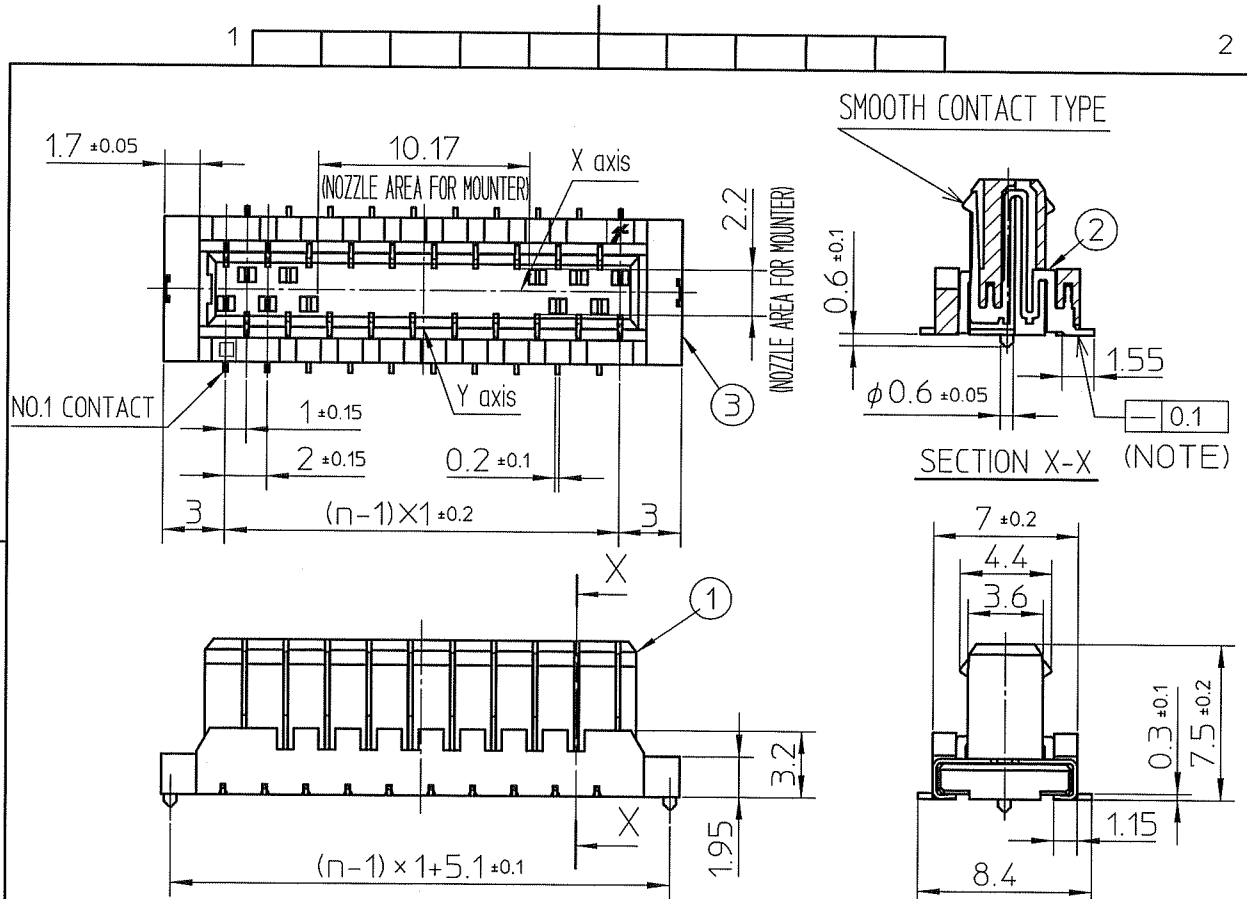
1

PDM: Rev:A

2

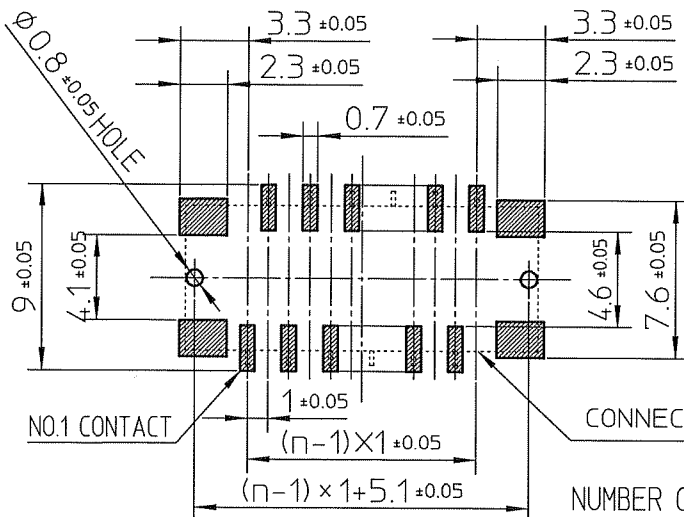
STATUS:Released

Printed: Mar 04, 2009



PT. NO.	PARTS NAME	MATERIAL	Q'TY	NOTE
1	HOUSING	GLASS FILLED THERMOPLASTIC RATED (UL94V-0)	1	COLOR: BRACK
2	CONTACT	PHOSPHOR BRONZE	n	PLATING CONTACT AREA: GOLD OVER NICKL TERMINAL AREA: TIN (LEAD FREE)
3	MOUNTING PLATE	BRASS	2	PLATING: TIN (LEAD FREE)

RECOMMENDED PC BOARD LAYOUT
(COMPONENT SIDE)



n: NO. OF CONTACTS

NOTE

1. This connector is symmetric for X,Y axis. As a result, It is possible to locate in emboss cavity even if rotated condition.
2. Flatness for contact terminal and mounting plate must be within 0.1.
3. This product meets European Union Directives and other country regulations as described in GS-22-008.

NUMBER OF CONTACTS : 18 TO 30 , ONLY EVEN POS.

mat'l. code				surface <input checked="" type="checkbox"/> ISO 1302 tolerance <input checked="" type="checkbox"/> ISO 406 <input type="checkbox"/> ISO 1101		projection		product family 590F	
ltr	ecn no	dr	date	tolerances unless otherwise specified				title FLOATING BOARD TO BOARD PLUG CONNECTOR (GOLD PLATING AND LEAD FREE) (CAT.No. BTFW__P-3SBTADLF)	
A	J07-0021	M.K	Jan.25,07	angles	linear				
				dr	K.Higuchi	Jan.25,07	dwg no		sheet 2 of 2
				enr	M.Koga	Jan.25,07	JSA97218		size A4
				chr	K.Higuchi	Jan.25,07	type		Product Customer Drawing
				appd	M.Koga	Jan.25,07			
sheet index	revision	A	A						
	sheet	1	2						