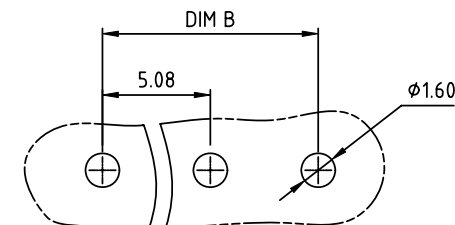
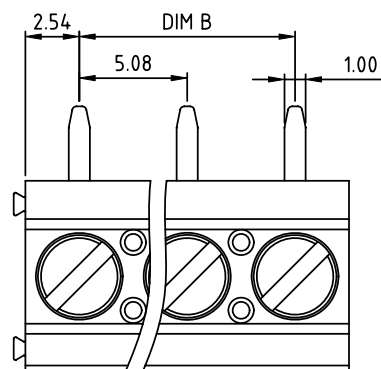
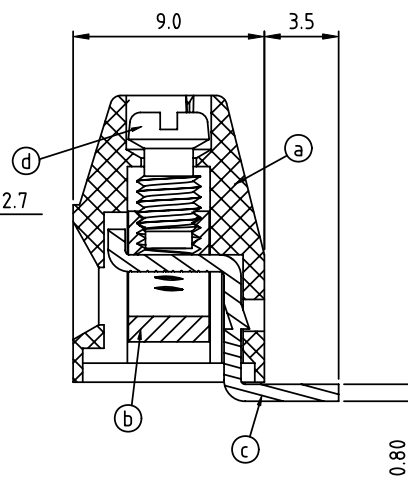
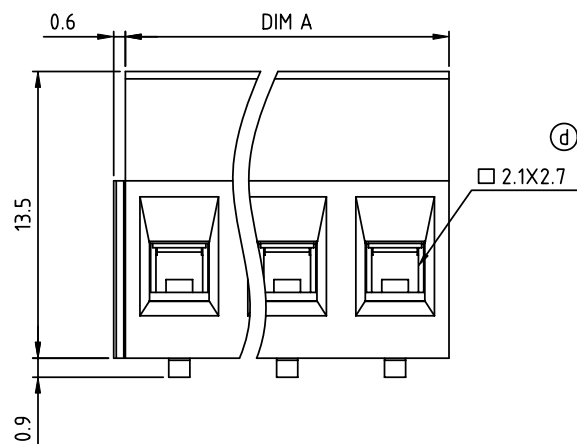


PRODUCT NUMBER	PITCH
Vlxx21x000J0G	5.08 mm



RECOMMENDED P.C.B. LAYOUT



## Material:

- Item (a) Terminal housing : Thermoplastic (UL 94V-0)
- Item (b) Clamp : Brass ,Ni plated
- Item (c) Solder pin : Brass ,Tin plated
- Item (d) Terminal screw : Steel Zinc plating"- "slot type

## Electrical cULus/FIMKO

- Voltage rating: 300VAC/300VAC
- Current rating: 16A/17.5A
- Wire range: 0.5 ~ 1.5mm<sup>2</sup>
- Solid wire(AWG): 12-28
- Stranded wire(AWG): 12-28
- Torque: 3.5Lb-In./0.5Nm
- Screw: M3
- Wire strip length: 6-7mm
- Withstanding Voltage: 1.6KV/2.5KV
- Operating temperature: -40°C to +115°C
- Soldering temperature: 260°C±5°C/5 Sec
- Safety Approval:

## Dimension

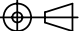


DIM A	N×5.08
DIM B	(N-1)×5.08

N=Number of poles

POLES	Tolerance
2p-6p	±0.15
7p-12p	±0.25
13p-16p	±0.35
17p-24p	±0.40

PART NO.: VI xx 2 1 x 0 00J0 G

End stackable	No. of poles	Color	RoHS compliant (lead<4%) In copper Alloy
0	2	Black (RAL9005)	
2	3	Red (RAL3001/D)	
3	4	Orange(RAL2011/P)	
4	5	Yellow(RAL1018/A)	
5	6	Green(RAL6018/T)	
6	7	Blue (RAL5015/A)	
7	8	Grey(RAL7035/D)	
8	9	White(RAL1102)	
9	10	Green(RAL6018/U)	

mat'l. code				surface ASME Y14.5 ✓		tolerance ASME Y14.5		projection 		product family TERMINAL BLOCK																			
ltr		ecn no		dr		date		tolerances unless otherwise specified																					
								angles		look		X.±0.5				TERMINAL BLOCK													
								X.X±0.3		X.XX±0.1																			
								X*±1"						scale		RISING CLAMP,90D WIRE INLET,END STACKABLE													
								dr		EVIN ZHONG		040914				dwg no		sheet 1 of 1				size							
								engr		EVIN ZHONG		040914				Vlxx21x000J0G		A4											
								chr		HANKE FENG		040914																	
								appd		SHI JUN		040914																	
sheet index		revision sheet		A		1																							