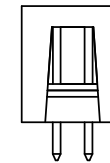
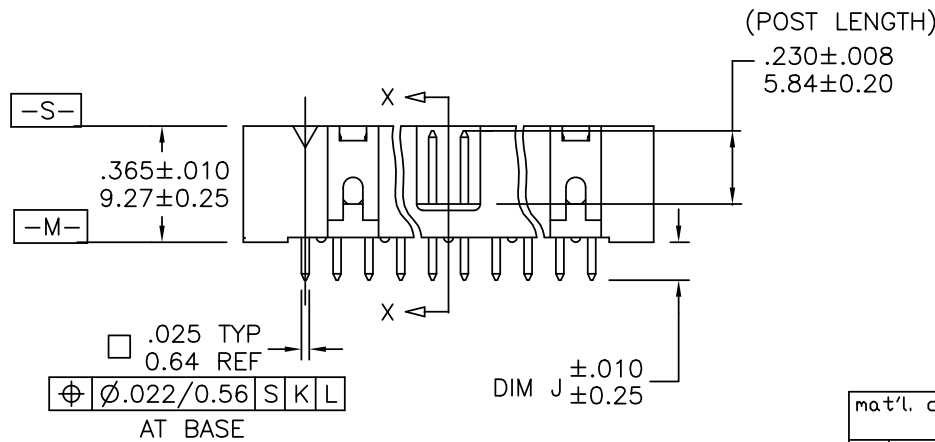
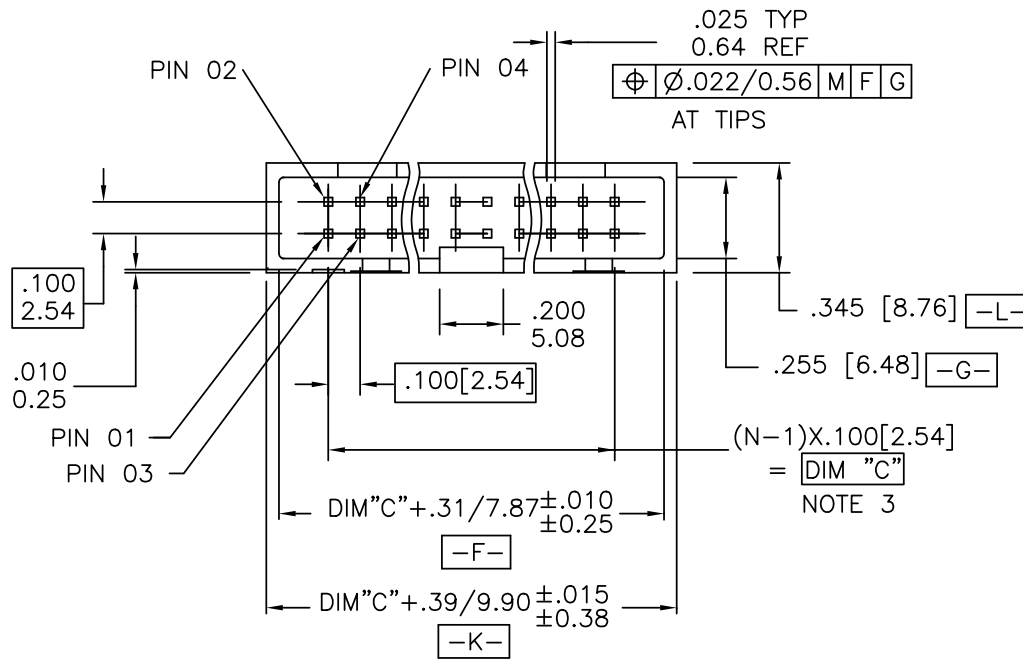


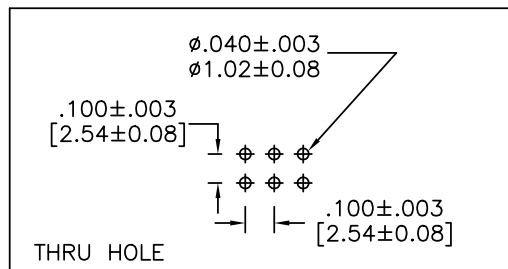
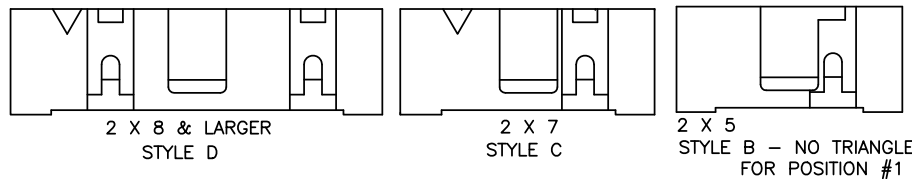
PRODUCT NUMBER
SEE TABLE



mat'l. code				surface	tolerance	projection	product family
ISO 1302				ISO 1302	ISO 406	ISO 1101	QUICKIE
l	tr	ec	n	dr	date	tolerances unless otherwise specified	title
AD	V42013	LSS	1/25/95	angles	linear	XXX±.01/XXX±.03	HEADER QUICKIE SLIM LINE
AE	V50332	MRC	5/25/95	±2'	linear	XXX±.005/XXX±.013	VERTICAL 4 WALL
AF	N05-0060	ERE	8/08/05	±2'	linear	XXX±.0020/XXX±.0051	scale 1:1
AG	M06-0282	AGS	7/22/06	dr	L. SANDERS	1/25/95	dwg no
AH	M07-0363	MHT	8/17/07	engr	M. SMYK	1/25/95	sheet of 10
AJ	N08-0138	R.B	07/08/08	chr	J. ROMBERGER	1/25/95	66506
AK	N08-0138	J.Z	2012-07-04	appd	M. SMYK	1/25/95	type Product Customer Drawing
sheet	revisio	AK	AK	AK	AK	AK	AK
index	sheet	1	2	3	4	5	6

PRODUCT NUMBER
SEE TABLE

HEADER STYLE



RECOMMENDED BOARD LAYOUT

NOTES:

1. SAME POSITION TOLERANCE APPLIES TO BOTH ENDS OF PINS.
2. MOLDING MATERIAL: GLASS-FILLED POLYESTER, FLAME RETARDANT PER UL 94 V-0, COLOR: BLACK.
3. 1° MAX. DRAFT PERMISSIBLE ON ALL SURFACES.
4. 3 LBS./1.36 KG MIN. TERMINAL PULL-OUT FORCE.
5. TERMINAL MATERIAL: PHOSPHORUS BRONZE.
6. TO DETERMINE DIMENSIONS:
N = NUMBER OF POSITIONS PER ROW
7. UNDER PLATING: 50μ"/1.27μm Ni.
8. PART NUMBERS WITH "R" FOLLOWING THE PART NUMBER (EXAMPLE 66506-326 R) HAS RETENTION. (ONLY PARTS WITH .105, .120, AND .150 ROUND OR SQUARE TAILS CAN HAVE RETENTION.) LOCATION IS MANUFACTURER'S OPTION.
FOR CONNECTORS:
RETENTIVE LEG APPLICABLE TO TAIL LENGTHS .125/3.18 MAX. 5LB/2.3KG MAX INSERTION FORCE AND .25LB./1KG MIN RETENTION FORCE PER RETENTIVE PIN USING .062/1.57 THICK CIRCUIT BOARD AND RECOMMENDED HOLE PATTERN. RETENTIVE LOCATION AT THE DISCRETION OF THE MANUFACTURER. RETENTION PIN MAY BE SHIFTED TO NEXT POSITION.
9. PART NUMBERS WITH "T" FOLLOWING PART NUMBER (EXAMPLE 66506-068 T IS PACKED IN TUBES.) (CALL PRODUCT MANAGER FOR AVAILABILITY.)
10. SEE 68751 FOR LATCHES.
11. MAY BE ORDERED WITH "G" PACK PACKAGING BY ADDING "G" TO DASH NUMBER.
12. ADD "LF" SUFFIX AT THE END OF PART NUMBER FOR LEAD FREE OPTION & PART NUMBERS WITH "LF" SUFFIX ADDED IN THE TABLE ARE LEAD FREE.
13. IF "LF" P/N THE PRODUCT MEETS EUROPEAN UNION DIRECTIVES AND OTHER COUNTRY REGULATION AS DESCRIBED IN GS-22-008.
14. THE HOUSING WILL WITHSTAND EXPOSURE TO 260°C PEAK TEMPERATURE FOR 15 SECONDS IN A WAVE SOLDER APPLICATION WITH A 1.57mm MINIMUM THICK CIRCUIT BOARD. SEE APPLICATION NOTES/PROCEDURES IF THEY ARE AVAILABLE.
15. "THIS PRODUCT HAS 100% TIN PLATING IN THE INTERFACE AND HAS NOT BEEN TESTED FOR WHISKER GROWTH IN ALL INTERCONNECT ENVIRONMENTS."
16. PLATING OPTIONS:
PERFORMANCE PLATING WILL BE EITHER GOLD OR GXT ON CONTACT OR TAIL, OPTIONALLY TIN ON TAIL.

mat'l. code		surface	tolerance	projection	product family	
		ISO 1302 ✓	ISO 406 ISO 1101		QUICKIE	
ltr	ecn	no	date		title	
AK				angles	HEADER QUICKIE SLIM LINE	
				linear	VERTICAL 4 WALL	
				±2°	scale 1:1	
		dr	L. SANDERS	1/25/95	FCI	dwg no
		engr	M. SMYK	1/25/95		66506
		chr	J. ROMBERGER	1/25/95		size
		appd	M. SMYK	1/25/95	type Product Customer Drawing	
sheet	revision					
index	sheet					

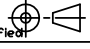

1		2		3							4				5				6
PRODUCT NUMBER NOTE 8, 9 & 12		SIZE	STYLE	DIM C	DIM J	PIN PLATING				PLASTIC MATERIAL									
66506 -025		2 X 20	D	1.900/48.26	.105/2.67	30u"/0.76u MIN (NOTE 16) OVER 50u"/1.27u Ni				NOTE 2									
-026					.150/3.81	30u"/0.76u MIN (NOTE 16) OVER 50u"/1.27u Ni													
-027					.675/17.15	30u"/0.76u MIN (NOTE 16) OVER 50u"/1.27u Ni													
-028					.105/2.67	120/200u" TIN LEAD													
-028LF					.105/2.67	100/160u" TIN													
-029					.150/3.81	120/200u" TIN LEAD													
-029LF					.150/3.81	100/160u" TIN													
-030					.675/17.15	120/200u" TIN LEAD													
-030LF		2 X 20		1.900/48.26	.675/17.15	100/160u" TIN													
-031		2 X 25		2.400/60.96	.105/2.67	30u"/0.76u MIN (NOTE 16) OVER 50u"/1.27u Ni													
-032					.150/3.81	30u"/0.76u MIN (NOTE 16) OVER 50u"/1.27u Ni													
-033					.675/17.15	30u"/0.76u MIN (NOTE 16) OVER 50u"/1.27u Ni													
-034					.105/2.67	120/200u" TIN LEAD													
-034LF					.105/2.67	100/160u" TIN													
-035					.150/3.81	120/200u" TIN LEAD													
-035LF					.150/3.81	100/160u" TIN													
-036					.675/17.15	120/200u" TIN LEAD													
-036LF		2 X 25	D	2.400/60.96	.675/17.15	100/160u" TIN													
-037		2 X 7	C	.600/15.24	.105/2.67	30u"/0.76u MIN (NOTE 16) OVER 50u"/1.27u Ni													
-038					.150/3.81	30u"/0.76u MIN (NOTE 16) OVER 50u"/1.27u Ni													
-039					.675/17.15	30u"/0.76u MIN (NOTE 16) OVER 50u"/1.27u Ni													
-040					.105/2.67	120/200u" TIN LEAD													
-040LF					.105/2.67	100/160u" TIN													
-041					.150/3.81	120/200u" TIN LEAD													
-041LF					.150/3.81	100/160u" TIN													
-042					.675/17.15	120/200u" TIN LEAD													
-042LF		2 X 7	C	.600/15.24	.675/17.15	100/160u" TIN													
-043		2 X 8	D	.700/17.78	.105/2.67	30u"/0.76u MIN (NOTE 16) OVER 50u"/1.27u Ni													
-044					.150/3.81	30u"/0.76u MIN (NOTE 16) OVER 50u"/1.27u Ni													
-045					.675/17.15	30u"/0.76u MIN (NOTE 16) OVER 50u"/1.27u Ni													
-046					.105/2.67	120/200u" TIN LEAD													
-046LF					.105/2.67	100/160u" TIN													
-047					.150/3.81	120/200u" TIN LEAD													
-047LF					.150/3.81	100/160u" TIN													
-048					.675/17.15	120/200u" TIN LEAD													
66506 -048LF		2 X 8	D	.700/17.78	.675/17.15	100/160u" TIN				NOTE 2									

FCI

FCIconnect.com

Copyright FCI

mat'l. code		surface ISO 1302 ✓		tolerance ISO 406 ISO 1101		projection ⊕		product family QUICKIE	
ltr ecn nodr date		tolerances unless otherwise specified						title	
AK		angles		linear		INCH/MM		HEADER QUICKIE SLIM LINE	
		±2"		.XX±.01/.XX±0.3 .XXX±.005/.XXX±0.13 .XXXX±.0020/.XXXX±0.051		scale 1:1		VERTICAL 4 WALL	
		dr		L. SANDERS		1/25/95		dwg no	
		engr		M. SMYK		1/25/95		sheet # of 10 size	
		chr		J. ROMBERGER		1/25/95		66506 A3	
		appd		M. SMYK		1/25/95		type Product Customer Drawing	
sheet index		revision sheet							

mat'l. code		surface ISO 1302 ✓		tolerance ISO 406 ISO 1101		projection <div>  </div>		product family QUICKIE	
ltr ecn nodr date		tolerances unless otherwise specified		<div>  </div>		title HEADER QUICKIE SLIM LINE VERTICAL 4 WALL		dwg no	
AK		angles		linear		INCH/MM		shee# of 10 size	
		±2°		XXX±.01/XXX.3 XXX±.005/XXX±.013 XXX±.0020/XXX±.051		scale 1:1		66506 A3	
		dr		L. SANDERS 1/25/95		FCI			
		engr		M. SMYK 1/25/95					
		chr		J. ROMBERGER 1/25/95					
		appd		M. SMYK 1/25/95				type Product Customer Drawing	
sheet index		revision sheet							



FCIconnect.com

Copyright FCI

PRODUCT NUMBER NOTE 8,9 & 12		SIZE	STYLE	DIM C	DIM J	PIN PLATING	PLASTIC MATERIAL
66506	-049	2 X 5	B	.400/10.16	.150/3.81	30u"/0.76u MIN (NOTE 16) OVER 50u"/1.27u Ni	NOTE 2
	-050	2 X 10	D	.900/22.86			
	-051	2 X 13		1.200/30.48			
	-052	2 X 17		1.600/40.64			
	-053	2 X 20		1.900/48.26			
	-054	2 X 25	D	2.400/60.96			
	-055	2 X 7	C	.600/15.24			
	-056	2 X 8	D	.700/17.78	.150/3.81	30u"/0.76u MIN (NOTE 16) OVER 50u"/1.27u Ni	
	-057	2 X 30		2.900/73.66	.105/2.67	30u"/0.76u MIN (NOTE 16) OVER 50u"/1.27u Ni	
	-058				.150/3.81	30u"/0.76u MIN (NOTE 16) OVER 50u"/1.27u Ni	
	-059				.675/17.15	30u"/0.76u MIN (NOTE 16) OVER 50u"/1.27u Ni	
	-060				.105/2.67	120/200u" TIN LEAD	
	-060LF				.105/2.67	100/160u" TIN	
	-061				.150/3.81	120/200u" TIN LEAD	
	-061LF				.150/3.81	100/160u" TIN	
	-062				.675/17.15	120/200u" TIN LEAD	
	-062LF				.675/17.15	100/160u" TIN	
	-063				.105/2.67	30u"/0.76u MIN (NOTE 16) OVER 50u"/1.27u Ni	
	-064				.150/3.81		
	-065	2 X 30	D	2.900/73.66	.675/17.15		
	-066	2 X 5	B	.400/10.16	.105/2.67		
	-067	2 X 5	B	.400/10.16	.675/17.15		
	-068	2 X 7	C	.600/15.24	.105/2.67		
	-069	2 X 7	C	.600/15.24	.675/17.15		
	-070	2 X 8	D	.700/17.78	.105/2.67	30u"/0.76u MIN (NOTE 16) OVER 50u"/1.27u Ni	
	-071	2 X 8	D	.700/17.78	.675/17.15	30u"/0.76u MIN (NOTE 16) OVER 50u"/1.27u Ni	
	-072	2 X 10		.900/22.86	.105/2.67		
	-073	2 X 10		.900/22.86	.675/17.15		
	-074	2 X 13		1.200/30.48	.105/2.67		
	-075	2 X 13		1.200/30.48	.675/17.15		
	-076	2 X 17		1.600/40.64	.105/2.67		
	-077	2 X 17		1.600/40.64	.675/17.15		
	-078	2 X 20		1.900/48.26	.105/2.67		
	-079	2 X 20		1.900/48.26	.675/17.15		
	-080	2 X 25		2.400/60.96	.105/2.67		
66506	-081	2 X 25	D	2.400/60.96	.675/17.15	30u"/0.76u MIN (NOTE 16) OVER 50u"/1.27u Ni	NOTE 2

mat'l. code		surface ISO 1302 ✓		tolerance ISO 406 ISO 1101		projection ISO 1001		product family QUICKIE	
ltr ecn nldr date		tolerances unless otherwise specified		linear		INCH/MM		title HEADER QUICKIE SLIM LINE VERTICAL 4 WALL	
AK		angles		XXX±.01/XXX.03		scale 1:1		dwg no 66506	
		±2"		XXX±.005/XXX.013		FCI		shee 5 of 10 size A3	
		dir L. SANDERS		1/25/95				type Product Customer Drawing	
		engr M. SMYK		1/25/95					
		chr J. ROMBERGER		1/25/95					
		appd M. SMYK		1/25/95					
sheet index		revision sheet							



FCIconnect.com

Copyright FCI

PRODUCT NUMBER NOTE 8,9 & 12	SIZE	STYLE	DIM C	DIM J	PIN PLATING	PLASTIC MATERIAL
66506-082	2 X 5	B	.400/10.16	.105/2.67	15u"/0.38u MIN (NOTE 16) OVER 50u"/1.27u Ni	NOTE 2
-083	2 X 5	B	.400/10.16	.150/3.81		
-084	2 X 5	B	.400/10.16	.675/17.15		
-085	2 X 7	C	.600/15.24	.105/2.67		
-086	2 X 7	C	.600/15.24	.150/3.81		
-087	2 X 7	C	.600/15.24	.675/17.15		
-088	2 X 8	D	.700/17.78	.105/2.67		
-089	2 X 8		.700/17.78	.150/3.81		
-090	2 X 8		.700/17.78	.675/17.15		
-091	2 X 10		.900/22.86	.105/2.67		
-092	2 X 10		.900/22.86	.150/3.81		
-093	2 X 10		.900/22.86	.675/17.15		
-094	2 X 13		1.200/30.48	.105/2.67		
-095	2 X 13		1.200/30.48	.150/3.81		
-096	2 X 13		1.200/30.48	.675/17.15		
-097	2 X 17		1.600/40.64	.105/2.67		
-098	2 X 17		1.600/40.64	.150/3.81		
-099	2 X 17		1.600/40.64	.675/17.15		
-100	2 X 20		1.900/48.26	.105/2.67		
-101	2 X 20		1.900/48.26	.150/3.81		
-102	2 X 20		1.900/48.26	.675/17.15		
-103	2 X 25		2.400/60.96	.105/2.67		
-104	2 X 25		2.400/60.96	.150/3.81		
-105	2 X 25	D	2.400/60.96	.675/17.15	15u"/0.38u MIN (NOTE 16) OVER 50u"/1.27u Ni	
-106	2 X 30	D	2.900/73.66	.105/2.67	15u"/0.38u MIN (NOTE 16) OVER 50u"/1.27u Ni	
-107	2 X 30	D	2.900/73.66	.150/3.81	15u"/0.38u MIN (NOTE 16) OVER 50u"/1.27u Ni	
-108	2 X 30	D	2.900/73.66	.675/17.15	15u"/0.38u MIN (NOTE 16) OVER 50u"/1.27u Ni	
-109	2 X 5	B	.400/10.16	.105/2.67	30u"/0.76u MIN (NOTE 16) OVER 50u"/1.27u Ni	
-110				.150/3.81	30u"/0.76u MIN (NOTE 16) OVER 50u"/1.27u Ni	
-111				.675/17.15	30u"/0.76u MIN (NOTE 16) OVER 50u"/1.27u Ni	
-112				.105/2.67	120/200u" TIN LEAD	
-112LF				.105/2.67	100/160u" TIN	
-113				.150/3.81	120/200u" TIN LEAD	
-113LF				.150/3.81	100/160u" TIN	
-114				.675/17.15	120/200u" TIN LEAD	
66506-114LF	2 X 5	B	.400/10.16	.675/17.15	100/160u" TIN	NOTE 2

mat'l. code		surface ISO 1302	tolerance ISO 406 ISO 1101	projection 	product family QUICKIE	
l	tr	ec	n	d	r	date
AK					title HEADER QUICKIE SLIM LINE VERTICAL 4 WALL	
					dwg no 66506	
					type Product Customer Drawing	
sheet index	revision sheet					



FCIconnect.com

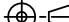
Copyright FCI

D

PRODUCT NUMBER NOTE 8,9 & 12	SIZE	STYLE	DIM C	DIM J	PIN PLATING	PLASTIC MATERIAL
66506-115	2 X 5	B	.400/10.16	.105/2.67	15u"/0.38u MIN (NOTE 16) OVER 50u"/1.27u Ni	NOTE 2
-116				.150/3.81	15u"/0.38u MIN (NOTE 16) OVER 50u"/1.27u Ni	
-117				.675/17.15	15u"/0.38u MIN (NOTE 16) OVER 50u"/1.27u Ni	
-118				.105/2.67	30u"/0.76u MIN (NOTE 16) OVER 50u"/1.27u Ni	
-119				.150/3.81	30u"/0.76u MIN (NOTE 16) OVER 50u"/1.27u Ni	
-120	2 X 5	B	.400/10.16	.675/17.15	30u"/0.76u MIN (NOTE 16) OVER 50u"/1.27u Ni	NOTE 2
-121	DISCONTINUED					
THRU						
-216						
-217	2 X 12	D	1.100/27.94	.105/2.67	15u"/0.38u MIN (NOTE 16) OVER 50u"/1.27u Ni	NOTE 2
-218					30u"/0.76u MIN (NOTE 16) OVER 50u"/1.27u Ni	
-219					30u"/0.76u MIN (NOTE 16) OVER 50u"/1.27u Ni	
-220				.105/2.67	120/200u" TIN LEAD	
-220LF				.105/2.67	100/160u" TIN	
-221				.150/3.81	15u"/0.38u MIN (NOTE 16) OVER 50u"/1.27u Ni	
-222					30u"/0.76u MIN (NOTE 16) OVER 50u"/1.27u Ni	
-223					30u"/0.76u MIN (NOTE 16) OVER 50u"/1.27u Ni	
-224				.150/3.81	120/200u" TIN LEAD	
-224LF				.150/3.81	100/160u" TIN	
-225				.675/17.15	15u"/0.38u MIN (NOTE 16) OVER 50u"/1.27u Ni	
-226					30u"/0.76u MIN (NOTE 16) OVER 50u"/1.27u Ni	
-227					30u"/0.76u MIN (NOTE 16) OVER 50u"/1.27u Ni	
-228					120/200u" TIN LEAD	
-228	2 X 12		1.100/27.94	.675/17.15	100/160u" TIN	
-229	2 X 15		1.400/35.56	.105/2.67	15u"/0.38u MIN (NOTE 16) OVER 50u"/1.27u Ni	
-230					30u"/0.76u MIN (NOTE 16) OVER 50u"/1.27u Ni	
-231					30u"/0.76u MIN (NOTE 16) OVER 50u"/1.27u Ni	
-232				.105/2.67	120/200u" TIN LEAD	
-232LF				.105/2.67	100/160u" TIN	
-233	2 X 15	D	1.400/35.56	.150/3.81	15u"/0.38u MIN (NOTE 16) OVER 50u"/1.27u Ni	
-234	2 X 15	D	1.400/35.56	.150/3.81	30u"/0.76u MIN (NOTE 16) OVER 50u"/1.27u Ni	
-235				.150/3.81	30u"/0.76u MIN (NOTE 16) OVER 50u"/1.27u Ni	
-236				.150/3.81	120/200u" TIN LEAD	
-236LF				.150/3.81	100/160u" TIN	
66506-237	2 X 15	D	1.400/35.56	.675/17.15	15u"/0.38u MIN (NOTE 16) OVER 50u"/1.27u Ni	NOTE 2

mat'l. code		surface ISO 1302 ✓		tolerance ISO 406 ISO 1101		projection ⊕		product family QUICKIE	
ltr ecn nodr		date		tolerances unless otherwise specified		INCH/MM		title	
AJ				angles linear		scale 1:1		HEADER QUICKIE SLIM LINE VERTICAL 4 WALL	
				±2"				dwg no	
				dir L. SANDERS		1/25/95		shee 7 of 10 size	
				engr M. SMYK		1/25/95		66506 A3	
				chr J. ROMBERGER		1/25/95		type Product Customer Drawing	
				appd M. SMYK		1/25/95			
sheet index		revision sheet							

PRODUCT NUMBER NOTE 8,9 & 12	SIZE	STYLE	DIM C	DIM J	PIN PLATING	PLASTIC MATERIAL
66506-238	2 X 5	B	.400/10.16	.675/17.15	30u"/0.76u MIN (NOTE 16) OVER 50u"/1.27u Ni	NOTE 2
-239					30u"/0.76u MIN (NOTE 16) OVER 50u"/1.27u Ni	
-240					120/200u" TIN LEAD	
-240LF	2 X 15		1.400/35.56	.675/17.15	100/160u" TIN	
-241	2 X 22		2.100/53.34	.105/2.67	15u"/0.38u MIN (NOTE 16) OVER 50u"/1.27u Ni	
-242					30u"/0.76u MIN (NOTE 16) OVER 50u"/1.27u Ni	
-243					30u"/0.76u MIN (NOTE 16) OVER 50u"/1.27u Ni	
-244				.105/2.67	120/200u" TIN LEAD	
-244LF				.105/2.67	100/160u" TIN	
-245				.150/3.81	15u"/0.38u MIN (NOTE 16) OVER 50u"/1.27u Ni	
-246					30u"/0.76u MIN (NOTE 16) OVER 50u"/1.27u Ni	
-247					30u"/0.76u MIN (NOTE 16) OVER 50u"/1.27u Ni	
-248				.150/3.81	120/200u" TIN LEAD	
-248LF				.150/3.81	100/160u" TIN	
-249				.675/17.15	15u"/0.38u MIN (NOTE 16) OVER 50u"/1.27u Ni	
-250					30u"/0.76u MIN (NOTE 16) OVER 50u"/1.27u Ni	
-251					30u"/0.76u MIN (NOTE 16) OVER 50u"/1.27u Ni	
-252	2 X 22		2.100/53.34	.675/17.15	120/200u" TIN LEAD	
66506-252LF	2 X 22		2.100/53.34	.675/17.15	100/160u" TIN	
66506-253	2 X 17	D	1.600/40.64	.105/2.67	15u"/0.38u MIN (NOTE 16) OVER 50u"/1.27u Ni	NOTE 2
66506-254	UNAVAILABLE					
THRU						
66506-279						
66506-280	2 X 10	D	.900/22.86	.105/2.67	120/200u" TIN LEAD	NOTE 2
66506-280LF	2 X 10	D	.900/22.86	.105/2.67	100/160u" TIN	NOTE 2
66506-281	UNAVAILABLE					
THRU						
66506-306						
66506-307	2 X 5	B	.400/10.16	.097/2.46	30u"/0.76u MIN (NOTE 16) OVER 50u"/1.27u Ni	NOTE 2
-308	2 X 5	B	.400/10.16			
-309	2 X 7	C	.600/15.24			
-310	2 X 8	D	.700/17.78			
-311	2 X 10		.900/22.86			
-312	2 X 12		1.100/27.94			
-66506-313	2 X 13	D	1.200/30.48	.097/2.46	30u"/0.76u MIN (NOTE 16) OVER 50u"/1.27u Ni	NOTE 2

mat'l. code				surface <input checked="" type="checkbox"/> tolerance <input checked="" type="checkbox"/>		projection <input checked="" type="checkbox"/>		product family			
				ISO 1302 <input checked="" type="checkbox"/> ISO 406 <input checked="" type="checkbox"/> ISO 1101 <input checked="" type="checkbox"/>				QUICKIE			
ltr		ecn		nodr		date		title			
AK								HEADER QUICKIE SLIM LINE			
								VERTICAL 4 WALL			
								scale 1:1			
								dwg no			
								shee 8 of 10 size			
								66506			
								A3			
								type Product Customer Drawing			
sheet		revision									
index		sheet									



FCIconnect.com

Copyright FCI

PRODUCT NUMBER NOTE 8, 9 & 12	SIZE	STYLE	DIM C	DIM J	PIN PLATING (NOTE 16)	PLASTIC MATERIAL
66506-341	2 X 17	D	1.600/40.64	.150/3.81	30u"/.76u MIN (NOTE 16) OVER 50u"/1.27u Ni	NOTE 2
-342	2 X 10	D	.900/22.86	.150/3.81	15u"/.38u MIN (NOTE 16) OVER 50u"/1.27u Ni	NOTE 2
-343	2 X 17	D	1.600/40.64	.150/3.81	15u"/.38u MIN (NOTE 16) OVER 50u"/1.27u Ni	NOTE 2
-344	U N A S S I G N E D					
-345	2 X 20	D	1.900/48.26	.120/3.05	15u"/.38u MIN (NOTE 16) OVER 50u"/1.27u Ni	NOTE 2
-346	U N A S S I G N E D					
-347	U N A S S I G N E D					
-348	2 X 5	B	.400/10.16	.105/2.67	15u/.38u MIN (NOTE 16) OVER 50u"/1.27u Ni	NOTE 2
-349	2 X 7	C	.600/15.24			
-350	2 X 8	D	.700/17.78			
-351	2 X 10		.900/22.86			
-352	2 X 13		1.200/30.48			
-353	2 X 17		1.600/40.64			
-354	2 X 20		1.900/48.26			
-355	2 X 22		2.100/53.34			
-356	2 X 25		2.400/60.96			
-357	2 X 30		2.900/73.66	.105/2.67	15u/.38u MIN (NOTE 16) OVER 50u"/1.27u Ni	
-358	2 X 10		.900/22.86	.150/3.81	30u"/.76u MIN (NOTE 16) OVER 50u"/1.27u Ni	
-359	2 X 17		1.600/40.64	.150/3.81	30u"/.76u MIN (NOTE 16) OVER 50u"/1.27u Ni	
-360	2 X 12	D	1.100/27.94	.295/7.49	15u/.38u MIN (NOTE 16) OVER 50u"/1.27u Ni	
-361	2 X 5	B	.400/10.16	.105/2.67	15u/.38u MIN (NOTE 16) OVER 50u"/1.27u Ni	
-362	2 X 5	B	.400/10.16	.105/2.67	30u/.76u MIN (NOTE 16) OVER 50u"/1.27u Ni	
-363	2 X 8	D	.700/17.78	.105/2.67		
-364	2 X 10	D	.900/22.86	.105/2.67		
-365	2 X 15	D	1.400/35.56	.105/2.67		
-366	2 X 17	D	1.600/40.64	.105/2.67		
-367	2 X 5	B	.400/10.16	.150/3.81		
-368	2 X 17	D	1.600/40.64	.150/3.81		
66506-369	2 X 25	D	2.400/60.96	.150/3.81	30u/.76u MIN (NOTE 16) OVER 50u"/1.27u Ni	NOTE 2

NOTE 11
NOTE 11

mat'l. code		surface ISO 1302	tolerance ISO 406 ISO 1101	projection 	product family QUICKIE	
l	tr	ec	n	d	r	date
AK					title HEADER QUICKIE SLIM LINE VERTICAL 4 WALL	
					dwg no 66506	
					sheet 10 of 10	
					size A3	
					type Product Customer Drawing	
sheet index	revision sheet					