



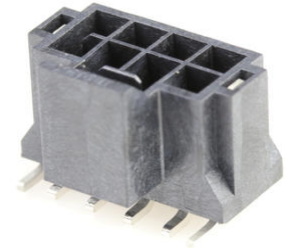
Part Number : [1054291108](#)

Product Description : Nano-Fit Vertical Header, Surface Mount, 2.50mm Pitch, Dual Row, 8 Circuits, 0.76µm Tin (Sn) Plating, Black, Glow-Wire Capable

Series Number : 105429

Status : Active

Product Category : PCB Headers and Receptacles



Documents and Resources

Drawings

[1054291108_sd.pdf](#)

[1054291000-PK-000.pdf](#)

3D Models and Design Files

[STEP AP242](#)

[SOLIDWORKS](#)

[Creo](#)

[Symbol and Footprint \(Multi-Format\)](#)

Specifications

[AS-105405-001-001.pdf](#)

[1054051000-PS-CH-000.pdf](#)

[1054051000-PS-ES-000.pdf](#)


[1054051000-PS-SK-000.pdf](#)

[PS-105405-001-001.pdf](#)

[1054051000-TS-000.pdf](#)

Product Environment Compliance

Compliance

GADSL/IMDS	Compliant with Exemption 44; 33; 34
China RoHS	 per SJ/T 11365-2006
EU ELV	Not Relevant

Low-Halogen Status	Low-Halogen per IEC 61249-2-21
REACH SVHC	Not Contained per D(2025)7771-DC (04 Feb 2026)
EU RoHS	Compliant per EU 2015/863

Compliance Statements

- EU RoHS
- REACH SVHC
- Low-Halogen

Industry Documents

- IPC 1752A Class C
- IPC 1752A Class D
- Molex Product Compliance Declaration
- IEC-62474
- chemSHERPA (xml)

Substances of Interest

- PFAS

EU RoHS Certificate of Compliance

Additional Product Compliance Information

Part Details

General

Status	Active
Category	PCB Headers and Receptacles
Series	105429
Description	Nano-Fit Vertical Header, Surface Mount, 2.50mm Pitch, Dual Row, 8 Circuits, 0.76µm Tin (Sn) Plating, Black, Glow-Wire Capable
Application	Wire-to-Board
Component Type	PCB Header
Product Name	Nano-Fit
UPC	191130010134

Agency

UL	E29179
----	--------

Electrical

Current - Maximum per Contact	7.0A
Voltage - Maximum	250V AC (RMS)/DC

Physical

Breakaway	No
Circuits (Loaded)	8
Circuits (maximum)	8
Color - Resin	Black
Durability (mating cycles max)	50
First Mate / Last Break	No
Flammability	94V-0
Gender	Male
Glow-Wire Capable	Yes
Keying to Mating Part	Yes
Lock to Mating Part	Yes
Material - Metal	Brass
Material - Plating Mating	Tin
Material - Plating Termination	Tin
Material - Resin	Liquid Crystal Polymer (LCP)
Net Weight	1.146/g
Number of Rows	2
Orientation	Vertical
Packaging Type	Embossed Tape on Reel
PCB Locator	No
PCB Thickness - Recommended	1.60mm
Pitch - Mating Interface	2.50mm
Pitch - Termination Interface	2.50mm
Plating min - Mating	0.762µm
Plating min - Termination	0.762µm
Polarized to Mating Part	Yes
Polarized to PCB	No
Temperature Range - Operating	-40° to +125°C
Termination Interface Style	Surface Mount

Mates With / Use With

Mates with Part(s)

Description	Part Number
Nano-Fit Receptacle Housing, TPA Capable, 2.50mm Pitch, Dual Row, 8 Circuits, Black, Glow-Wire Capable	<u>1053081208</u>
Nano-Fit Receptacle Housing, TPA Capable, 2.50mm Pitch, Dual Row, 8 Circuits, Black, Glow-Wire Capable, for UL 1569/1007 Wire	<u>2263621208</u>
Nano-Fit-to-Nano-Fit Off-the-Shelf (OTS) Overmolded Cable Assemblies	<u>245130</u>

This document was generated on Jun 07, 2026