

LED enclosure light - PLD E 400 W 375



2702222

<https://www.phoenixcontact.com/us/products/2702222>

Please be informed that the data shown in this PDF document is generated from our Online Catalog. Please find the complete data in the user documentation. Our General Terms of Use for Downloads are valid.



LED enclosure light, 24 V DC, length: 375 mm, degree of protection: IP20, can be swiveled, can be switched in series, including mounting accessories

Product Description

The LED light is designed to illuminate the interior of control cabinets. The prismatic integrated into the light cover ensures optimum illumination of the control cabinet. You can mount the light without tools via the clip system. You can connect several lights in succession. You can switch the light on and off either via the integrated button or via an external door position switch.

Your advantages

- Tool-free mounting, thanks to clip fastening
- Wiring via sensor/actuator cables with M8 snap-in technology
- Series connection reduces cabling effort for control cabinets arranged in series
- Optimum lighting of the control cabinet, thanks to integrated prismatic and capacity to swivel
- Swiveling enables optimum adjustment to the relevant control cabinet depth
- LED service life of 50,000 h (L70 value) prevents bulb replacement

Commercial Data

| | |
|--------------------------------------|--------------------------------|
| Item number | 2702222 |
| Packing unit | 1 pc |
| Minimum order quantity | 1 pc |
| Note | Made to Order (non-returnable) |
| Sales Key | C22 |
| Product Key | DRL232 |
| Catalog Page | Page 499 (C-6-2019) |
| GTIN | 4055626057781 |
| Weight per Piece (including packing) | 218.1 g |
| Weight per Piece (excluding packing) | 170 g |
| Customs tariff number | 94054231 |
| Country of origin | DE |

LED enclosure light - PLD E 400 W 375



2702222

<https://www.phoenixcontact.com/us/products/2702222>

Technical Data

Notes

Utilization restriction

| | |
|----------|---|
| EMC note | EMC: class A product, see manufacturer's declaration in the download area |
|----------|---|

Product properties

| | |
|-------------------|-----------------|
| Product type | Light |
| Mounting position | any |
| Application | Control cabinet |
| Socket | none |

Electrical properties

| | |
|---|-------|
| Maximum power dissipation for nominal condition | 4.2 W |
|---|-------|

Supply: Module electronics

| | |
|----------------------|------------------------|
| Connection method | M8 connector (snap-in) |
| Number of positions | 3 |
| Supply voltage | 24 V DC |
| Supply voltage range | 19.2 V DC ... 30 V DC |
| Power consumption | 3 W |

Connection data

| | |
|-------------------|------------------------|
| Connection method | M8 connector (snap-in) |
|-------------------|------------------------|

LED signaling

Light properties

| | |
|----------------------------------|--|
| Source of light type | LED |
| Number of LEDs | 12 |
| Service life, lighting appliance | 50,000 h (L70) |
| Color temperature | 5000 K |
| Color rendering index | 75 |
| Luminous flux | 340 lm (Net luminous flux) |
| Illumination | max. 845 lx (50 cm distance) |
| | max. 210 lx (Distance of 1 m) |
| Ordinance | Delegated Regulation (EU) 2019/2015 |
| Energy efficiency class | E (1 light source) |
| Note | This product contains an energy efficiency class E light source. |

Dimensions

| | |
|---------------------|--|
| Dimensional drawing | |
|---------------------|--|

LED enclosure light - PLD E 400 W 375



2702222

<https://www.phoenixcontact.com/us/products/2702222>

| | |
|--------|--------|
| Width | 23 mm |
| Height | 38 mm |
| Length | 375 mm |

Material specifications

| | |
|------------------|-------------------------|
| Color | traffic grey A RAL 7042 |
| Housing material | Plastic |

Environmental and real-life conditions

Ambient conditions

| | |
|--|---|
| Ambient temperature (operation) | -25 °C ... 60 °C |
| Degree of protection | IP20 |
| Air pressure (operation) | 70 kPa ... 106 kPa (up to 3000 m above sea level) |
| Air pressure (storage/transport) | 70 kPa ... 106 kPa (up to 3000 m above sea level) |
| Ambient temperature (storage/transport) | -40 °C ... 85 °C |
| Permissible humidity (operation) | 5 % ... 95 % |
| Permissible humidity (storage/transport) | 5 % ... 95 % |

Standards and regulations

| | |
|------------------|-----|
| Protection class | III |
|------------------|-----|

Mounting

| | |
|-----------------------|---|
| Mounting type | Clip mounting |
| Assembly instructions | Magnet attachment available as an accessory |
| | Screw fixings available as accessories |
| Mounting position | any |

LED enclosure light - PLD E 400 W 375

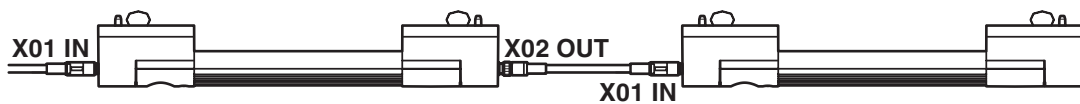


2702222

<https://www.phoenixcontact.com/us/products/2702222>

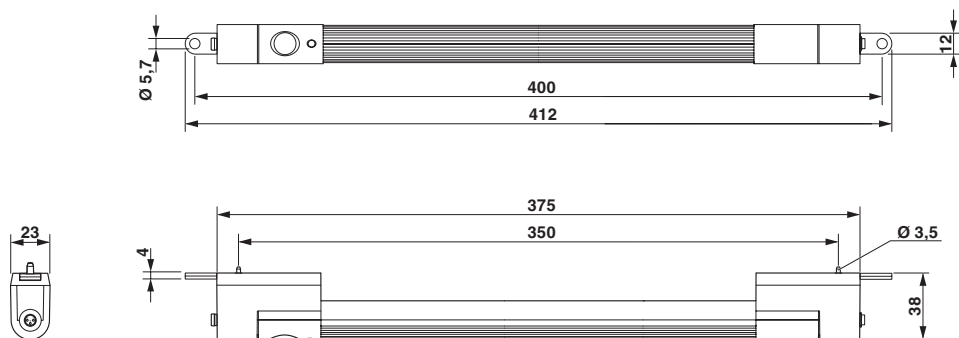
Drawings

Schematic diagram



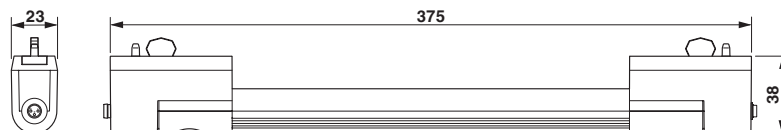
Series connection of two lights

Dimensional drawing



Dimensional drawing for screw mounting

Dimensional drawing



Dimensional drawing

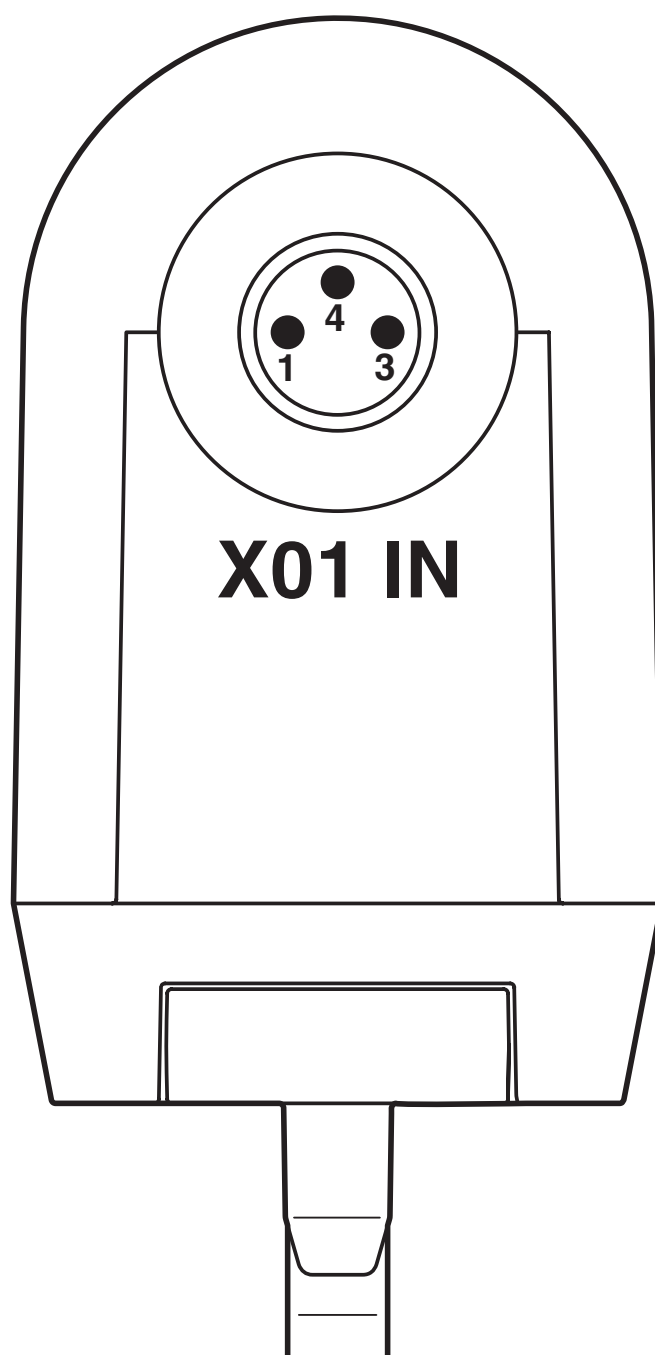
LED enclosure light - PLD E 400 W 375

2702222

<https://www.phoenixcontact.com/us/products/2702222>



Connection diagram



Connection of the supply voltage of a light

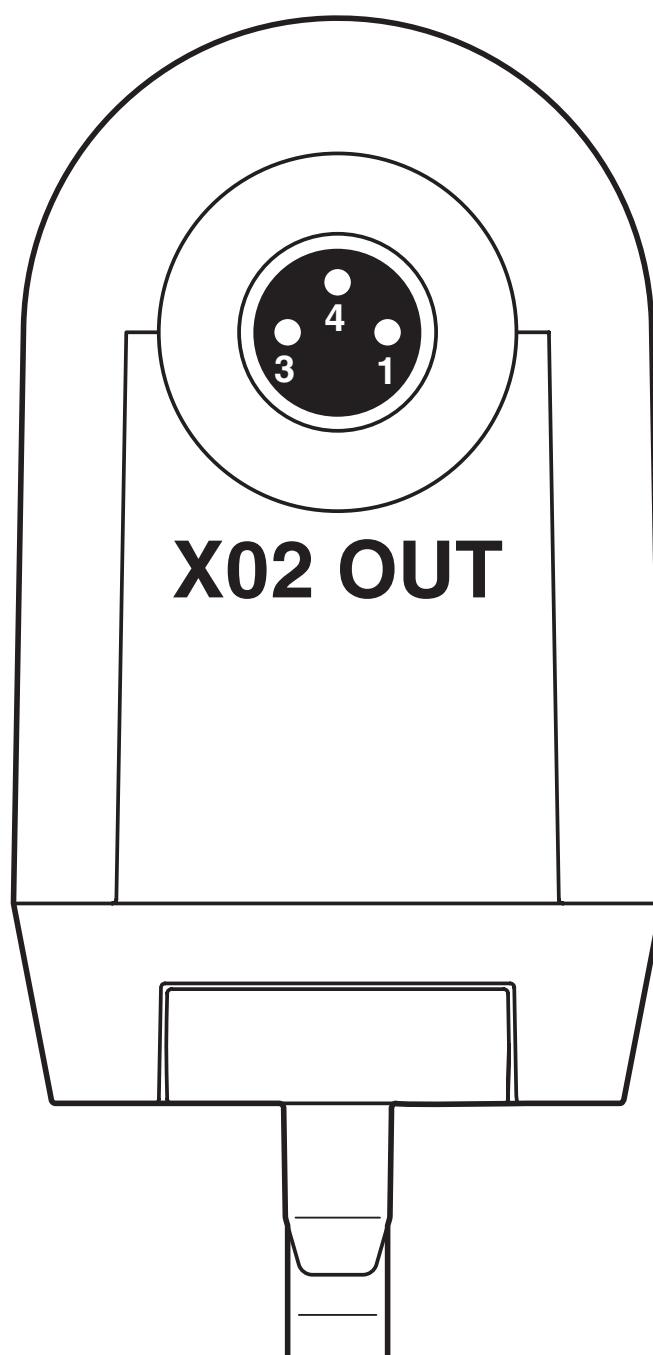
LED enclosure light - PLD E 400 W 375

2702222

<https://www.phoenixcontact.com/us/products/2702222>



Connection diagram



Forwarding of the supply voltage with the series connection of lights

LED enclosure light - PLD E 400 W 375

2702222

<https://www.phoenixcontact.com/us/products/2702222>

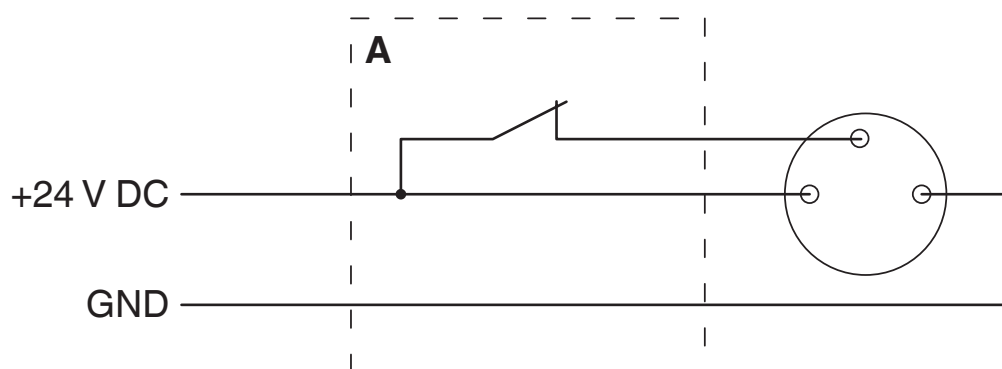


Schematic diagram



Connection of a light

Connection diagram



Connection of the light using a door position switch (A)

LED enclosure light - PLD E 400 W 375



2702222

<https://www.phoenixcontact.com/us/products/2702222>

Classifications

ECLASS

| | |
|---------------|----------|
| ECLASS-9.0 | 27189241 |
| ECLASS-10.0.1 | 27182808 |
| ECLASS-11.0 | 27182808 |

ETIM

| | |
|----------|----------|
| ETIM 8.0 | EC000321 |
|----------|----------|

UNSPSC

| | |
|-------------|----------|
| UNSPSC 21.0 | 32151500 |
|-------------|----------|

LED enclosure light - PLD E 400 W 375



2702222

<https://www.phoenixcontact.com/us/products/2702222>

Environmental Product Compliance

| | |
|------------|---|
| China RoHS | Environmentally friendly use period: unlimited = EFUP-e |
| | No hazardous substances above threshold values |

LED enclosure light - PLD E 400 W 375



2702222

<https://www.phoenixcontact.com/us/products/2702222>

Accessories

Power supply unit

Power supply unit - STEP-PS/ 1AC/24DC/0.5 - 2868596

<https://www.phoenixcontact.com/us/products/2868596>



Primary-switched STEP POWER power supply for DIN rail mounting, input: 1-phase, output: 24 V DC/0.5 A

Power supply unit

Power supply unit - STEP-PS/ 1AC/24DC/0.75/FL - 2868622

<https://www.phoenixcontact.com/us/products/2868622>



Primary-switched STEP POWER power supply for DIN rail mounting, input: 1-phase, output: 24 V DC/0.75 A

LED enclosure light - PLD E 400 W 375



2702222

<https://www.phoenixcontact.com/us/products/2702222>

Mains plug

Mains plug - PLD E 400-PS/1AC/24DC/12W - 2702435

<https://www.phoenixcontact.com/us/products/2702435>

Plug-in power supply unit for class 400 LED enclosure lights, including country-specific plug adapters for Europe, Great Britain, USA and Australia; max. output voltage 12 W



Mains plug

Mains plug - PLD E 400-PS/1AC/24DC/30W - 2702436

<https://www.phoenixcontact.com/us/products/2702436>

Plug-in power supply unit for class 400 LED enclosure lights, including country-specific plug adapters for Europe, Great Britain, USA and Australia; max. output voltage 30 W



LED enclosure light - PLD E 400 W 375



2702222

<https://www.phoenixcontact.com/us/products/2702222>

Sensor/actuator cable

Sensor/actuator cable - SAC-3P- 3,0-PUR/M 8SIFS AE - 1417698

<https://www.phoenixcontact.com/us/products/1417698>



Sensor/actuator cable, 3-position, PUR halogen-free, black-gray RAL 7021, free cable end, on Socket straight M8 Snap-in, cable length: 3 m, with ferrules

Sensor/actuator cable

Sensor/actuator cable - SAC-3P-M 8MS/ 0,6-PUR/M 8SIFS - 1417699

<https://www.phoenixcontact.com/us/products/1417699>



Sensor/actuator cable, 3-position, PUR halogen-free, black-gray RAL 7021, Plug straight M8, on Socket straight M8 Snap-in, cable length: 0.6 m

LED enclosure light - PLD E 400 W 375



2702222

<https://www.phoenixcontact.com/us/products/2702222>

Sensor/actuator cable

Sensor/actuator cable - SAC-3P-M 8MS/ 1,0-PUR/M 8SIFS - 1417700

<https://www.phoenixcontact.com/us/products/1417700>



Sensor/actuator cable, 3-position, PUR halogen-free, black-gray RAL 7021, Plug straight M8, on Socket straight M8 Snap-in, cable length: 1 m

Sensor/actuator cable

Sensor/actuator cable - SAC-3P-M 8MS/ 3,0-PUR/M 8SIFS - 1417701

<https://www.phoenixcontact.com/us/products/1417701>



Sensor/actuator cable, 3-position, PUR halogen-free, black-gray RAL 7021, Plug straight M8, on Socket straight M8 Snap-in, cable length: 3 m

LED enclosure light - PLD E 400 W 375



2702222

<https://www.phoenixcontact.com/us/products/2702222>

Door position switch

Door position switch - PLD E 400-DS-3,0/FS/0,6 - 2702336

<https://www.phoenixcontact.com/us/products/2702336>



Door position switch with 3 m cable with open cable end and 0.6 m cable with M8 socket (Snap-in), including mounting accessories

Door position switch

Door position switch - PLD E 400-DS-MS/1,0-FS/0,6 - 2702337

<https://www.phoenixcontact.com/us/products/2702337>



Door position switch with 1 m cable with M8 plug and 0.6 m cable with M8 socket (Snap-in), including mounting accessories

LED enclosure light - PLD E 400 W 375



2702222

<https://www.phoenixcontact.com/us/products/2702222>

Mounting material

Mounting material - PLD E 400-ME MM - 2702312

<https://www.phoenixcontact.com/us/products/2702312>

Set for magnetic mounting of class 400 PLD enclosure lights



Mounting material

Mounting material - PLD E 400-ME SM - 2702313

<https://www.phoenixcontact.com/us/products/2702313>

Set for screw mounting of class 400 PLD enclosure lights, including screws and washers



LED enclosure light - PLD E 400 W 375



2702222

<https://www.phoenixcontact.com/us/products/2702222>

Mounting material

Mounting material - PLD E 400-ME CM - 2702314

<https://www.phoenixcontact.com/us/products/2702314>

Set consisting of two clip retainers for class 400 PLD enclosure lights
(replacement part)



Phoenix Contact 2022 © - all rights reserved

<https://www.phoenixcontact.com>

Phoenix Contact USA
586 Fulling Mill Road
Middletown, PA 17057, United States
(+717) 944-1300
info@phoenixcon.com