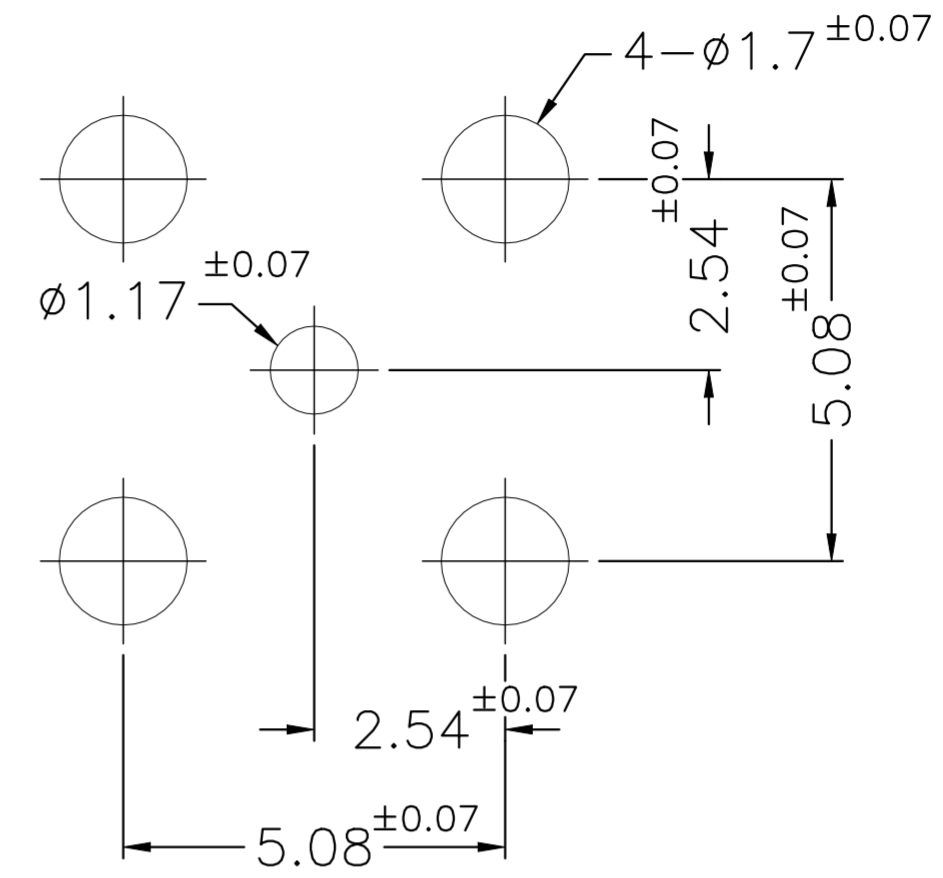
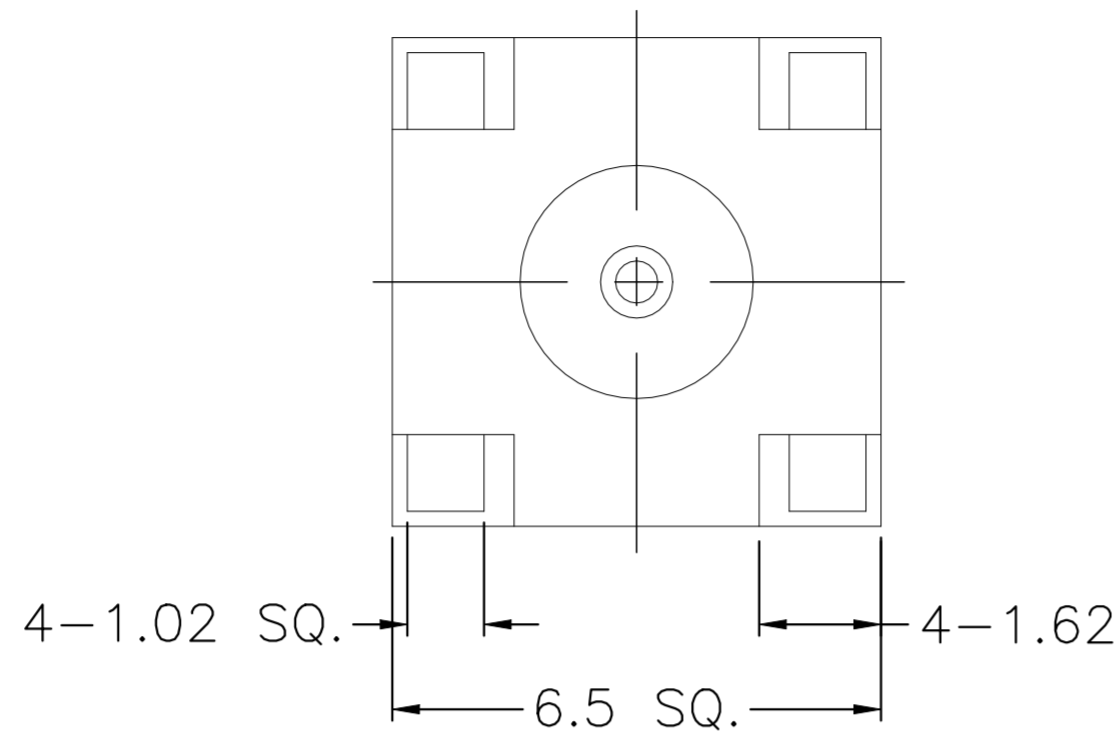
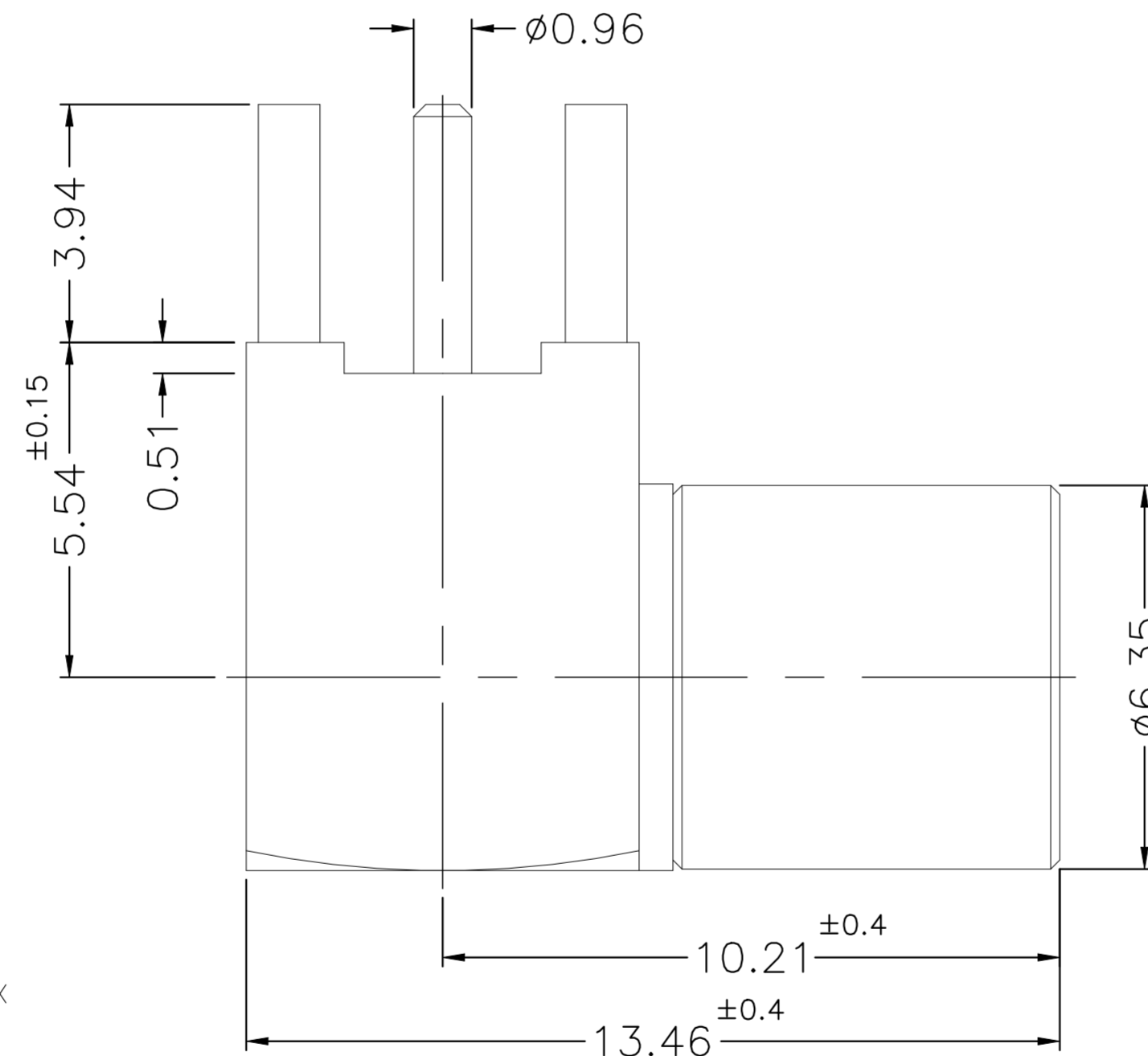


REVISIONS					
P	LTR	DESCRIPTION	DATE	DWN	APVD
	A	GTP(ECN-23-231223)	15SEP2023	ED	WH



PCB MOUNTING HOLE



NOTES:

- PACK IN ACCORDANCE WITH TE SPEC 107-3275;
- ALL DIMENSIONS ARE NOMINAL FOR REFERENCE ONLY UNLESS OTHERWISE STATED;
- ELECTRICAL CHARACTERISTICS :  
 FREQUENCY RANGE : DC-6GHz  
 NOMINAL IMPEDANCE : 50 OHMS  
 INSULATION RESISTANCE : 5000 MOHMS  
 WORKING VOLTAGE : 335 VRMS MAX  
 DIELECTRIC WITHSTANDING VOLTAGE : 750 VOLTS MAX  
 VSWR : 1.3(DC-6GHz)  
 CONTACT RESISTANCE :  
 CENTER CONTACT : 6 mOHMS MAX  
 OUTER CONTACT : 2.5 mOHMS MAX;
- MECHANICAL CHARACTERISTICS :  
 DURABILITY : 500 CYCLES  
 ENGAGEMENT AND DISENGAGEMENT FORCE:  
 ENGAGEMENT: 14 lbs max;  
 DISENGAGEMENT: 14 lbs max;
- TEMPERATURE RANGE: -65°-+165°;
- RoHS: COMPLIANT.

QTY	DESCRIPTION	MATERIAL	DESCRIPTION	ITEM
1	NATURAL	PTFE	INSULATOR	7
1	NATURAL	BERYLLIUM COPPER	RETAINER RING	6
1	GOLD 30u"/NICKEL/COPPER	BERYLLIUM COPPER	CONTACT PIN	5
1	NATURAL	PTFE	INSULATOR	4
1	BRIGHT TIN 200u"/NICKEL/COPPER	BRASS	HOUSING	3
1	ELECTROLESS NICKEL 100u"	BRASS	BODY	2
1	NICKEL 100u"/COPPER	BRASS	SHELL	1
2466281-1	PLATING	MATERIAL	DESCRIPTION	ITEM

THIS DRAWING IS A CONTROLLED DOCUMENT.

DIMENSIONS: mm	TOLERANCES UNLESS OTHERWISE SPECIFIED: 0 PLC ± 0.3 1 PLC ± 0.2 2 PLC ± 0.1 3 PLC ± - 4 PLC ± - ANGLES ± 5'	DWN ED 11SEP2023 CHK ED 11SEP2023 APVD WH 11SEP2023		
MATERIAL SEE TABLE	FINISH -	PRODUCT SPEC - APPLICATION SPEC - WEIGHT -	<b>SMB PLUG,PCB MOUNTING HOLE, RIGHT ANGLE,BULKHEAD,6GHZ</b>	
CUSTOMER DRAWING		SIZE A2 CAGE CODE 00779 DRAWING NO C=2466281	RESTRICTED TO -	SCALE 8:1 SHEET 1 OF 1 REV A