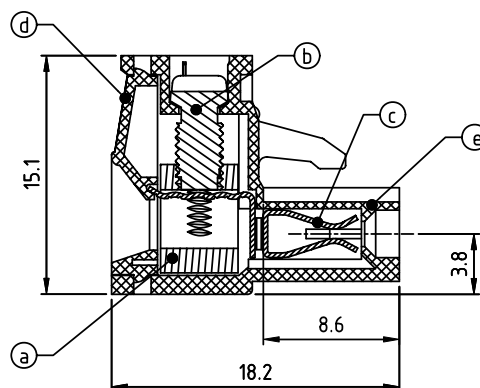
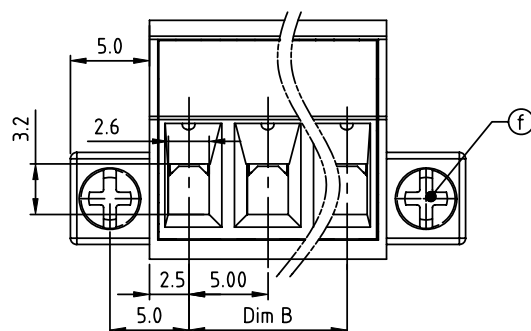
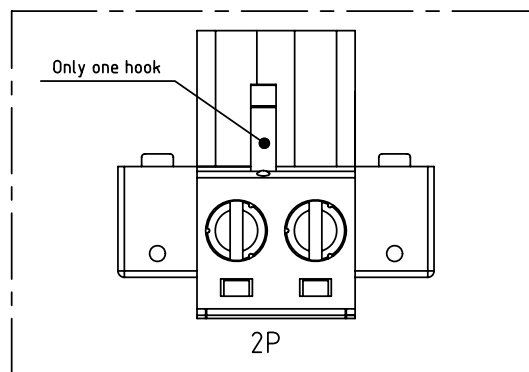
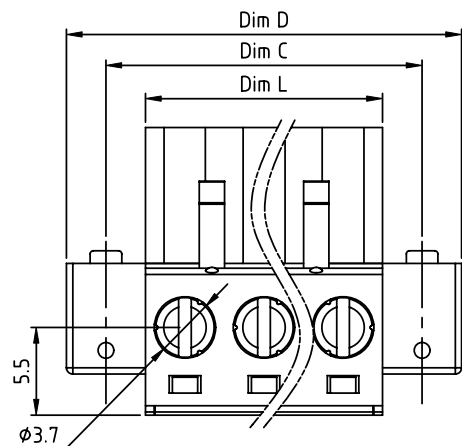


PRODUCT NUMBER	PITCH
TJxx71x200J0G	5.00 mm



## Material

- Item (a) Clamp: Brass(CuZn) Ni plated
- Item (b) Terminal screw: Steel Zinc plating "-" slot type
- Item (c) Female contact: High conductivity copper, Tin plated
- Item (d) With flange screw: Steel Zinc plating M2.5"/+/-" slot type
- Item (e) Terminal (housing): Thermoplastic (UL94V-0)
- Item (f) Terminal (cover): Thermoplastic (UL94V-0)

## Electrical cULus/VDE/TUV

- Voltage rating: 300VAC/300VAC/300VAC
- Current rating: 20A/20A/20A
- Wire range: 2.5mm<sup>2</sup>/0.34-2.5mm<sup>2</sup>
- Solid wire(AWG): 12-24
- Stranded wire(AWG): 12-24
- Torque: 5Lb-In/0.5Nm/0.56Nm
- Screw: M3
- Wire strip length: 7-8mm
- Withstanding Voltage: 1.6KV/2.5KV/2.5KV
- Operating temperature: -40°C to +115°C
- Safety Approval:

## N=NUMBER OF POLES

Dim L=N×5.00
Dim B=(N-1)×5.00
Dim C=(N+1)×5.00
Dim D=(N+2)×5.00

POLES	Tolerance
2P-5P	±0.15
6P-10P	±0.20
11P-15P	±0.25
16P-20P	±0.30
21P-24P	±0.40

PART NO.: TJ xx 71 x 2 00J0 G

No. of poles	Color	RoHS compliant
02 2 poles	0 Black (RAL9005)	(lead<4%)
03 3 poles	2 Red (RAL3001/D)	In copper Alloy
...	3 Orange(RAL2011/P)	
24 24 poles	4 Yellow(RAL1018/A)	
	5 Green(RAL6018/T)	
	6 Blue (RAL5015/A)	
	8 Grey(RAL7035/D)	
	9 White(RAL1102)	
	C Green(RAL6018/U)	

mat'l. code				surface	tolerance	projection	product family	
ltr ecn no dr date				ASME Y14.5	ASME Y14.5		TERMINAL BLOCK	
				tolerances unless otherwise specified		MM	title	
				angles	X.±0.5		TERMINAL BLOCK	
				flat	X.X±0.3		PLUGGABLE PLUG,DOWN CONTACT,WITH FLANGE	
				X°±1°	X.XX±0.1	scale	dwg no sheet 1 of 1 size	
				dr	HANKE FENG 031514		TJxx71x200J0G A4	
				enr	HANKE FENG 031514			
				chr	SHI JUN 031514			
				appd	SHI JUN 031514		type CUSTOMER Drawing	
sheet index	revision sheet	A	1					