



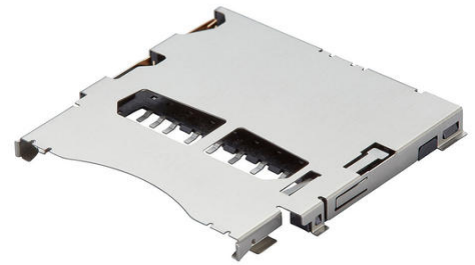
**Part Number :** [5035000993](#)

**Product Description :** 2.50mm Pitch SD Memory Card Connector, 2.95mm Height, Normal Mount, Push-Push, with Detect, Protect and Anti-Card-Fly-Out Features

**Series Number :** 503500

**Status :** Active

**Product Category :** Memory / SIM Card Connectors



---

## Documents and Resources

### Drawings

[5035000993\\_sd.pdf](#)

### 3D Models and Design Files

[STEP AP242](#)

[SOLIDWORKS](#)

[Creo](#)

[5035000993.dxf](#)

### Specifications

[SPK-502250-001-001.pdf](#)


[5035009200-SPK-200.pdf](#)

[5035000000-010.pdf](#)

---

## Product Environment Compliance

### Compliance

GADSL/IMDS	Compliant with Exemption 44; 34; 33
China RoHS	 per SJ/T 11365-2006
EU ELV	Not Relevant
Low-Halogen Status	Low-Halogen per IEC 61249-2-21
REACH SVHC	Not Contained per D(2025)7771-DC (04 Feb 2026)
EU RoHS	Compliant per EU 2015/863

## Compliance Statements

- EU RoHS
- REACH SVHC
- Low-Halogen

## Industry Documents

- IPC 1752A Class C
- IPC 1752A Class D
- Molex Product Compliance Declaration
- IEC-62474
- chemSHERPA (xml)

## Substances of Interest

- PFAS

## EU RoHS Certificate of Compliance

## Additional Product Compliance Information

---

## Part Details

### General

Status	Active
Category	Memory / SIM Card Connectors
Series	503500
Description	2.50mm Pitch SD Memory Card Connector, 2.95mm Height, Normal Mount, Push-Push, with Detect, Protect and Anti-Card-Fly-Out Features
Product Name	SD Card
Style	Push-Push
UPC	191128387170

### Electrical

Current - Maximum per Contact	0.5A
Shielded	Yes
Voltage - Maximum	50V AC (RMS)/DC

### Physical

Card Detection Switch	Open
Card Entry Location	Front

Circuits (Loaded)	9
Durability (mating cycles max)	10000
Ejector Button Side	N/A
Material - Contact	Copper Alloy
Material - Plating Mating	Gold
Material - Plating Termination	Tin
Material - Shell	Stainless Steel
Net Weight	1547.202/mg
Packaging Type	Embossed Tape on Reel
PCB Locator	No
PCB Retention	Yes
Pitch - Mating Interface	2.50mm
Temperature Range - Operating	-25° to +85°C
Termination Interface Style	Surface Mount

## Mates With / Use With

### Use with Part(s)

Description	Part Number
Use With	SD Card

---

This document was generated on Apr 10, 2026