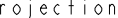


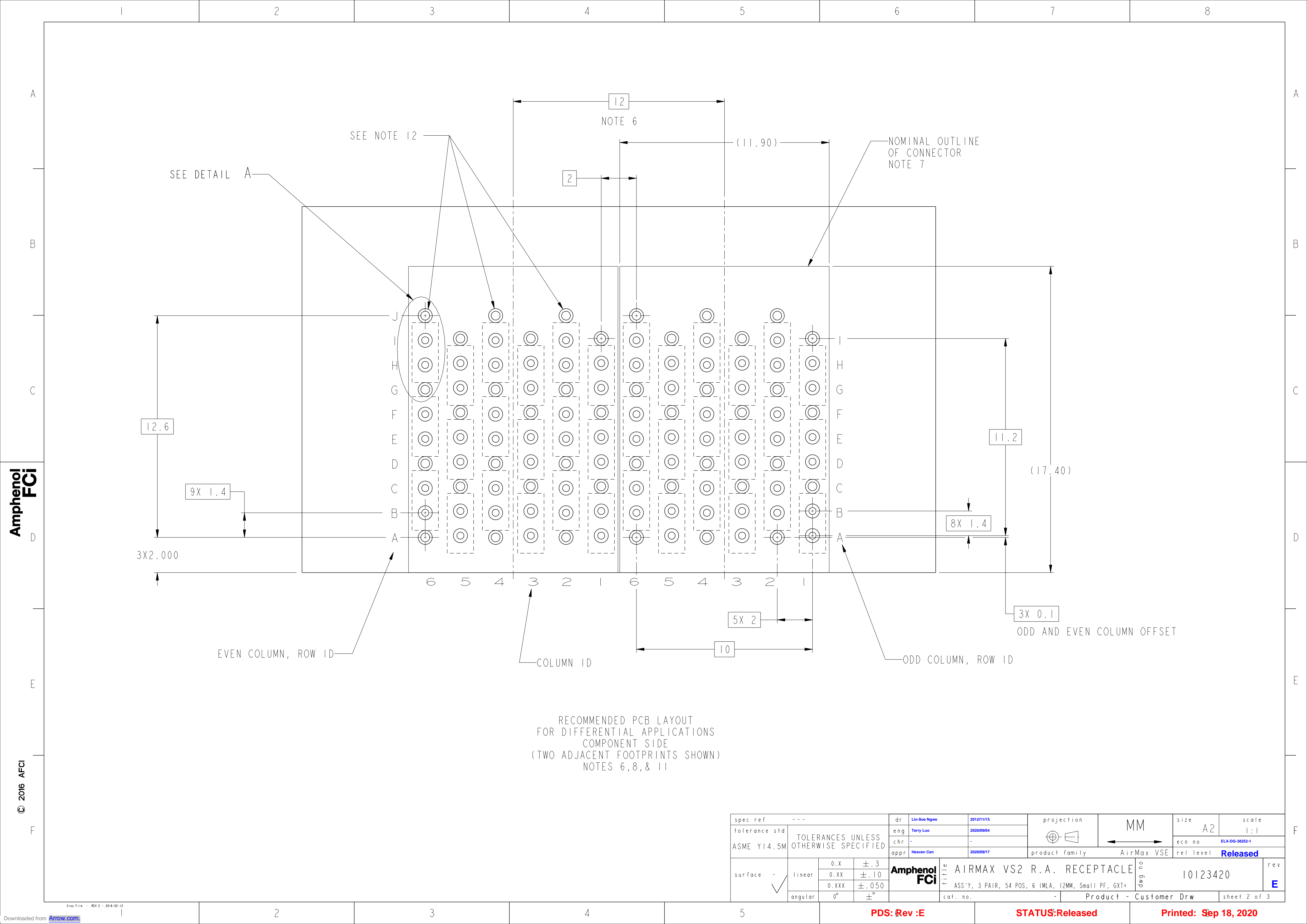


spec ref		---		dr		Lin-See Ngwe		2012/11/15		<div>projection</div> <div></div>		<div>MM</div> <div></div>		size		scale			
tolerance std				eng		Terry Luo		2020/09/04						A2		1:1			
ASME Y14.5M		TOLERANCES UNLESS OTHERWISE SPECIFIED		chr		-		-				ecn no		ELX-DG-38252-1					
				appr		Heaven Cen		2020/09/17		product family		AirMax VSE		rel level		Released			
<div>surface</div> <div>-</div> <div></div>		linear		0.X		±.3		<div>Amphenol</div> <div>FCI</div>		title		AIRMAX VS2 R.A. RECEPTACLE		dwg no		10123420		rev	
				0.XX		±.10													
				0.XXX		±.050													
		angular		0°		±°						cat. no.		-		Product - Customer Drw		sheet 1 of 3	



Amphenol  
FCi

© 2016 APCI

RECOMMENDED PCB LAYOUT  
FOR DIFFERENTIAL APPLICATIONS  
COMPONENT SIDE  
(TWO ADJACENT FOOTPRINTS SHOWN)  
NOTES 6, 8, & 11

spec ref				---		dr		Lin-Soe Ngwe		2012/11/15		projection		MM		size		A2		scale		1:1	
tolerance std				ASME Y14.5M		eng		Terry Luo		2020/09/04						ecn no		ELX-DG-38252-1					
surface		-		linear		chr		-		appr						Heaven Cen		2020/09/17		product family		AirMax VSE	
						0.X 0.XX 0.XXX		±.3 ±.10 ±.050		Amphenol FCi		title		AIRMAX VS2 R.A. RECEPTACLE ASS'Y, 3 PAIR, 54 POS, 6 IMLA, 12MM, Small PF, GXT+		dwg no		10123420		rev		E	
angular		0°		±°																			

PDS: Rev :E

STATUS:Released

Printed: Sep 18, 2020

