

1

2

3

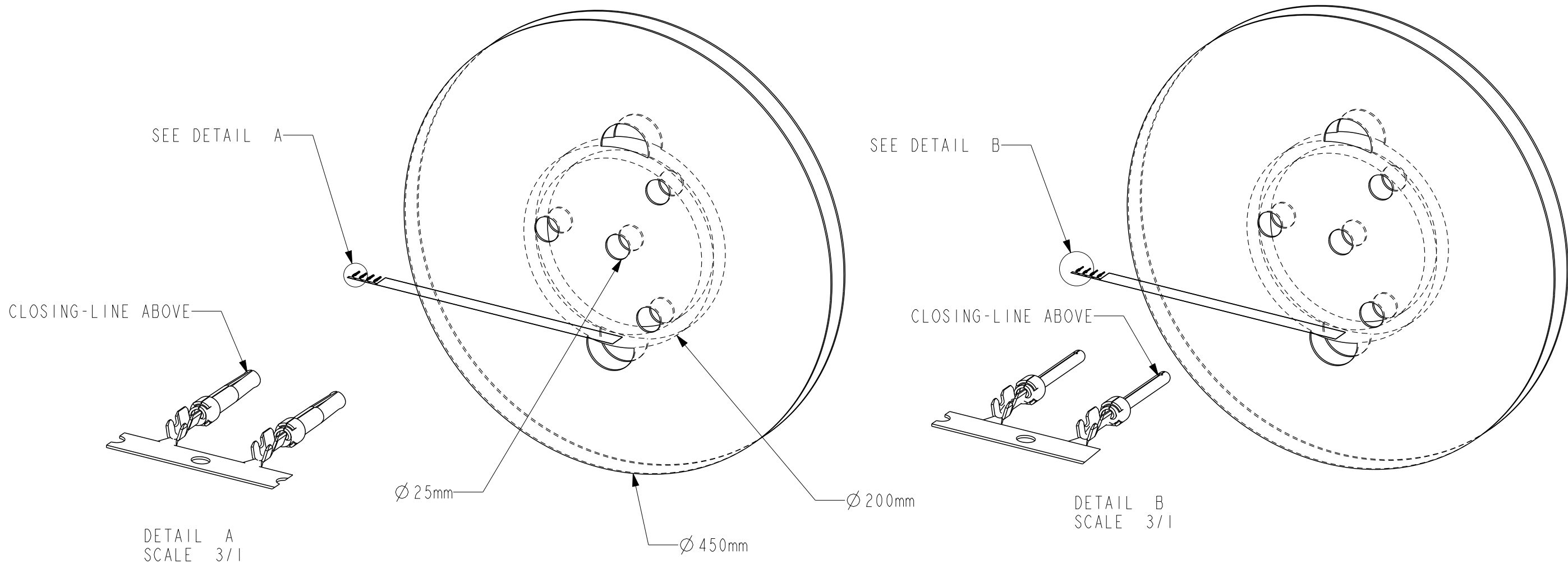
4

REFERENCE FOR REEL ACCORDING TO FEEDING DIRECTION



GAUGE	REEL OF 5000 FEMALE CONTACTS	GAUGE	REEL OF 5000 PIN CONTACTS
# 24-28	86566710064LF	# 24-28	86564710064LF
# 20-24	86566720064LF	# 20-24	86564720064LF
# 24-28	86566710065LF	# 24-28	86564710065LF
# 20-24	86566720065LF	# 20-24	86564720065LF
# 24-28	86566710067LF	# 24-28	86564710067LF
# 20-24	86566720067LF	# 20-24	86564720067LF

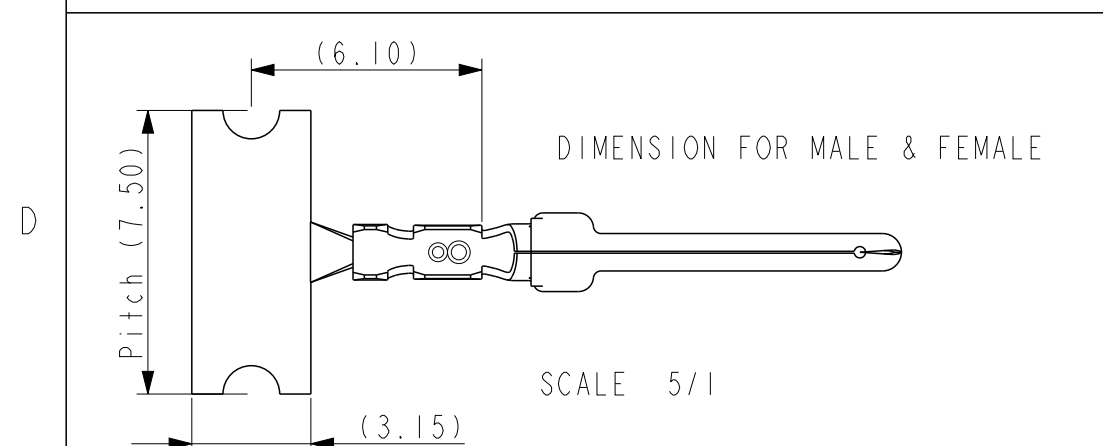
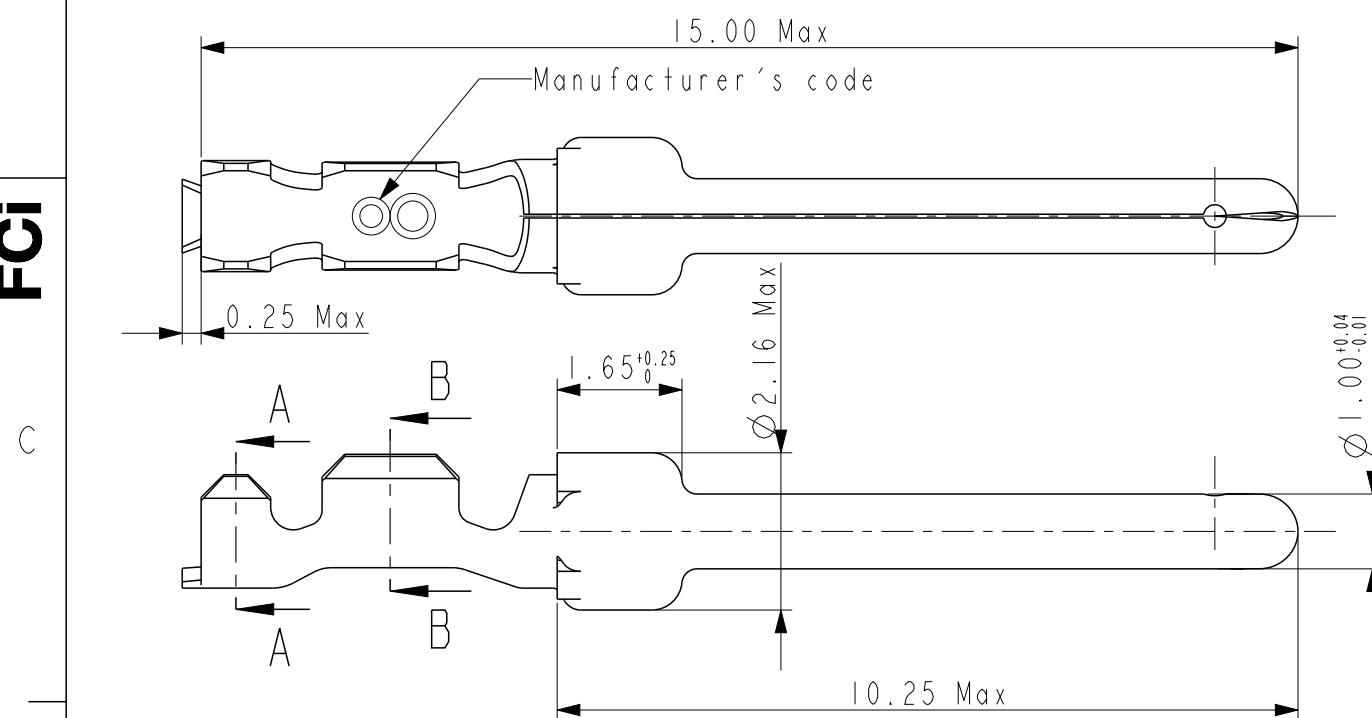
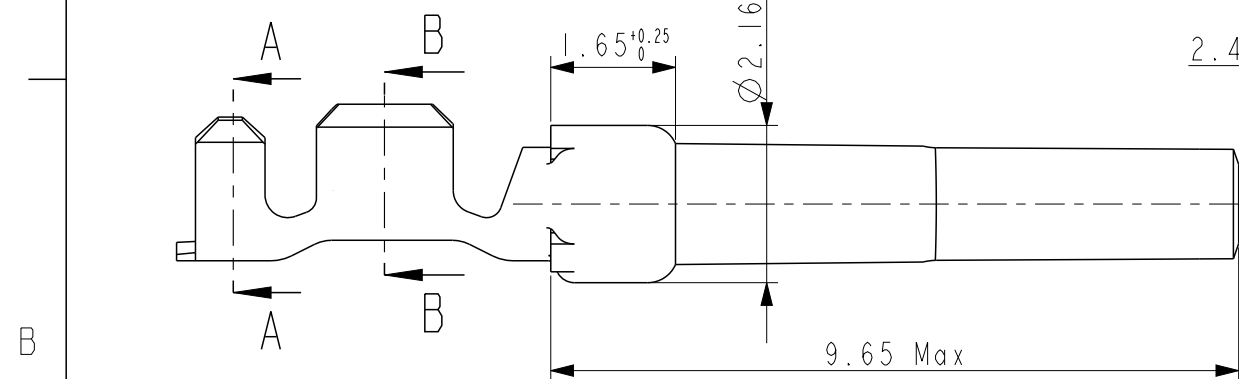
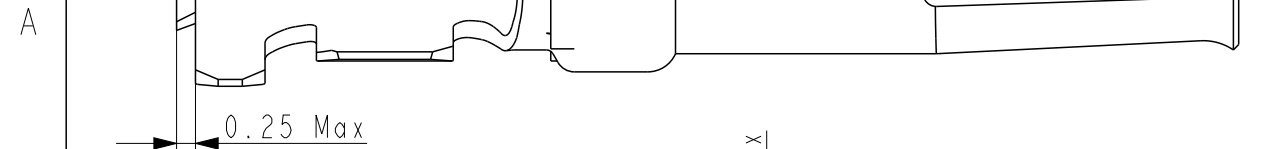
Amphenol  
FCi

© 2016 AFCI



NOTE : ROHS INFORMATIONS  
The LF products meet European union directives and other country regulations as described in GS-47-0004  
Terminations plating spec : 1.3um Nickel min + 1.3um Sn min  
Packaging Spec : see GS-14-920

spec ref		-		dr		P-Mathew Nebu		2011/05/17		projection		mm		size		A3		scale		5/1					
tolerance std		TOLERANCES UNLESS OTHERWISE SPECIFIED		eng		Paul Mithun		2019/03/18						ecn no		ELX-I-32091-1									
chr				-		-																			
appr				K-Paul Biju		2019/03/19		product family						-		rel level						Released			
surface		linear		0.X		±0.3		Amphenol FCI		title		CRIMP PIN & SOCKET		dwg no		C01-8656-1525		rev		K					
																						0.XX		±0.1	
																						0.XXX		±0.05	
ISO 1302		angular		0°		±2°				cat. no.		-		Product - Customer Drw		sheet 1 of 2									






NOTES

- 1- Material : Phosphor bronze, thickness 0.20
- 2 -Finish on contact area : termination 064:gold flash  
termination 065:076μ Au / GXT  
termination 067:0,4μ Au / GXT  
finish on termination : Tin over Nickel
- 3 -Wire range :20 to 28 AWG(see ref sheet 1/2)
- 4 -Max outer dia of wire insulator:  
-1.52 mm max for contact #20-24  
-1.02 mm max for contact #24-28
- 5 -Current carrying capacity per contact:  
5 Amps max when crimped to #20 AWG  
5 Amps max when crimped to #22 AWG  
3 Amps max when crimped to #24 AWG  
2 Amps max when crimped to #26 AWG  
1 Amps max when crimped to #28 AWG
- 6 -After 5 insertions into connector,  
contact retention must be 5 pounds axial load min
- 7 -When contact is crimped to 20 AWG, the insulation  
support crimped height must be 1.78 mm max to ensure  
a proper insertion into housing.
- 8-Reel should be continuous without any contacts  
missing in between
- 9 -Packaging : 5000 Contacts Per Reel

CROSS SECTION  
FOR CT #20-24

CROSS SECTION  
FOR CT #24-28

spec ref -				dr P-Mathew Nebu		2011/05/17		projection				mm		size A3		scale 10/1							
tolerance std ISO 406 ISO 1101				TOLERANCES UNLESS OTHERWISE SPECIFIED				eng Paul Mithun		2019/03/18													
								chr -		-													
												appr K-Paul Biju				2019/03/19		product family -					
surface  ISO 1302				linear		0.X		±0.3		Amphenol FCI				title CRIMP PIN & SOCKET 20-24AWG, 5000 Reel Qty				dwg no C01-8656-1525				rev K	
						0.XX		±0.1															
						0.XXX		±0.05															
				angular		0°		±2°						cat. no. -				Product - Customer Drw				sheet 2 of 2	