



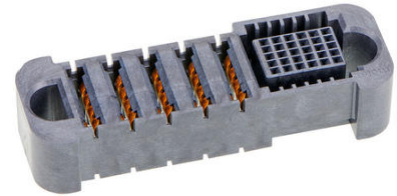
Part Number : [2195630020](#)

Product Description : EXTreme Guardian HD
Vertical Receptacle Assembly with Guide Receivers, 5
Power Circuits, 30 Signal Circuits

Series Number : 219563

Status : Active

Product Category : Board-to-Board Connectors



Documents and Resources

Drawings

[2195630020_sd.pdf](#)

3D Models and Design Files

[STEP AP242](#)

[SOLIDWORKS](#)

[Creo](#)


[Symbol and Footprint \(Multi-Format\)](#)

Specifications

[2141130000-PS-000.pdf](#)

Product Environment Compliance

Compliance

| | |
|--------------------|---|
| GADSL/IMDS | Compliant with Exemption 44; 34; 33 |
| China RoHS |  per SJ/T 11365-2006 |
| EU ELV | Not Relevant |
| Low-Halogen Status | Low-Halogen per |
| REACH SVHC | Not Contained per D(2025)7771-DC (04 Feb 2026) |
| EU RoHS | Compliant per EU 2015/863 |

[Compliance Statements](#)

- EU RoHS

- REACH SVHC
- Low-Halogen

Industry Documents

- IPC 1752A Class C
- IPC 1752A Class D
- Molex Product Compliance Declaration
- IEC-62474
- chemSHERPA (xml)

Substances of Interest

- PFAS

EU RoHS Certificate of Compliance

Additional Product Compliance Information

Part Details

General

| | |
|----------------|---|
| Status | Active |
| Category | Board-to-Board Connectors |
| Series | 219563 |
| Description | EXTreme Guardian HD Vertical Receptacle Assembly with Guide Receivers, 5 Power Circuits, 30 Signal Circuits |
| Application | Board-to-Board, Power, Signal |
| Component Type | Receptacle |
| Product Name | EXTreme Guardian HD |
| UPC | 196823042812 |

Agency

| | |
|-----|---------|
| CSA | LR19980 |
| UL | E29179 |

Electrical

| | |
|-------------------------------|--------|
| Current - Maximum per Contact | 130.0A |
| Voltage - Maximum | 125V |

Physical

| | |
|-----------|----|
| Breakaway | No |
|-----------|----|

| | |
|--------------------------------|--------------------------------|
| Circuits (Loaded) | 35 |
| Circuits (maximum) | 35 |
| Color - Resin | Black |
| Durability (mating cycles max) | 200 |
| First Mate / Last Break | No |
| Flammability | 94V-0 |
| Glow-Wire Capable | No |
| Guide to Mating Part | Yes |
| Keying to Mating Part | No |
| Lock to Mating Part | No |
| Mated Height | 12.74mm |
| Material - Metal | High Conductivity Copper |
| Material - Plating Mating | Gold |
| Material - Plating Termination | Tin |
| Material - Resin | Liquid Crystal Polymer (LCP) |
| Net Weight | 17.990/g |
| Number of Rows | 1, 5 |
| Orientation | Vertical |
| Packaging Type | Tray |
| PCB Locator | No |
| PCB Retention | No |
| PCB Thickness - Recommended | 1.58mm |
| PC Tail Length | 2.42mm, 2.83mm |
| Pitch - Mating Interface | 5.78mm, 2.00mm |
| Plating min - Mating | 0.762µm |
| Plating min - Termination | 2.540µm |
| Polarized to Mating Part | Yes |
| Polarized to PCB | Yes |
| (p)ower-(s)ignal Configuration | 5p - 30s |
| Temperature Range - Operating | -40° to +125°C, -40° to +105°C |
| Termination Interface Style | Through Hole - Compliant Pin |

Mates With / Use With

Mates with Part(s)

| Description | Part Number |
|---|-------------------|
| EXTreme Guardian HD Right-Angle Plug Assembly with Guide Pins, 5 Power Circuits, 30 Signal Circuits | <u>2195620020</u> |

This document was generated on Apr 20, 2026