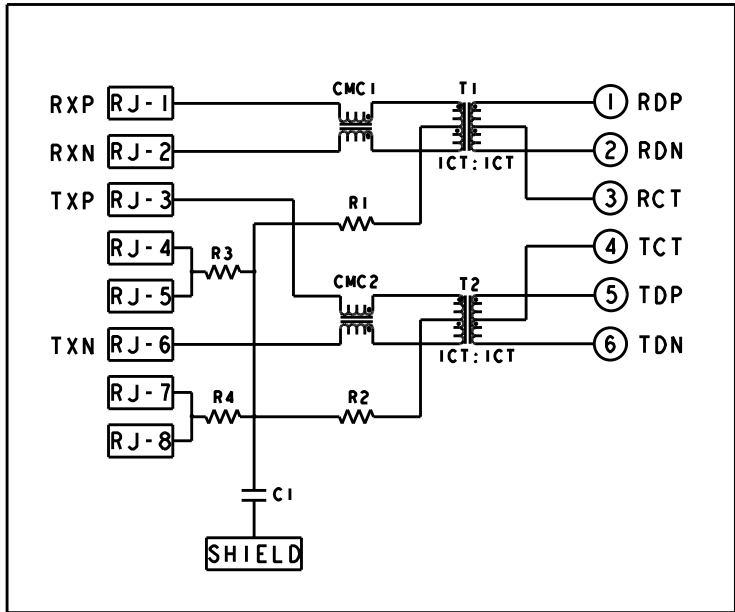


TOP AND BOTTOM PORTS



C1 = 1000pF, 2kV, X7R DECOUPLING CAP
R1-R4 = 75 Ohms, RESISTORS

1. MATERIALS:
PLASTIC HOUSING: BLACK, THERMOPLASTIC FLAMMABILITY RATING UL 94V-0
SHIELD: BRASS, PREPLATED WITH 0.76um MIN SEMI-BRIGHT NICKEL,
POST DIPPED WITH 2.54um MIN SAC SOLDER ON SOLDER TAILS,
CONTACTS: PHOSPHOR BRONZE, 1.27um MIN OVERALL NICKEL
UNDERPLATE WITH SELECTED 1.27um MIN GOLD AT MATING INTERFACE
AND 2.54um MIN MATTE TIN ON SOLDER TAILS.
LED: DIFFUSED EPOXY LENS, CARBON STEEL LEAD FRAME TAILS OF LED
ARE PREPLATED WITH 2.03um MIN SILVER OVER 1.02um MIN NICKEL
UNDERPLATE OVER 1.02um MIN COPPER UNDERPLATE. POST-PLATED WITH
2.54um MIN MATTE TIN AND/OR SAC SOLDER DIP OR PURE TIN SOLDER DIP

2. MAGNETICS
APPLICATION: 10/100 BASE-T
IMPEDANCE: 100 OHMS
TURNS RATIO (CHIP:CABLE): TX = 1:1, RX = 1:1
OPEN CIRCUIT INDUCTANCE (OCL): 350uH MIN @100kHz, 0.1VRMS,
8mADC BIAS FROM 0°C TO 70°C, TX AND RX

PERFORMANCE @ 25°C:
INSERTION LOSS (IL): 1.1dB MAX FROM 0.5MHz TO 100MHz
RETURN LOSS (RL): 18dB MIN FROM 0.5MHz TO 30MHz
18-20LOG(f/30)dB MIN FROM 30.1MHz TO 60MHz
12dB MIN FROM 60.1MHz TO 80MHz
CROSSTALK ATTENUATION: 35dB MIN FROM 0.5MHz TO 40MHz
33-20LOG(f/50)dB MIN FROM 40.1MHz TO 100MHz
COMMON MODE REJECTION RATIO (CMRR): 30dB MIN FROM 0.5MHz TO 100MHz
ISOLATION VOLTAGE: 2250VDC (MAX) FOR 60 SECONDS WITH A RISE TIME OF
500V/SEC AND WITH ALL PORTS CONNECTED.

3. PART NUMBER, DATE CODE AND COUNTRY OF ORIGIN ARE
LOCATED IN APPROXIMATE AREA SHOWN. DATE CODE: YYWW WHERE "YY" IS YEAR,
"WW" IS WEEK, "D" IS DAY OF WEEK, WITH SUNDAY=1.

4. TRP LOGO AND AGENCY APPROVAL LOGO ARE
LOCATED IN APPROXIMATE AREA SHOWN.

5. OPERATING TEMP: FROM 0°C TO +70°C.

6. RJ45 CAVITY CONFORMS TO FCC RULES AND REGULATION PART 68 SUBPART F.

7. INDICATED MAGNETIC CONNECTIONS ARE SYMMETRICAL AND
SUPPORT AUTO-MDI/MDIX.

8. DATUM AND BASIC DIMENSION ESTABLISHED BY CUSTOMER.

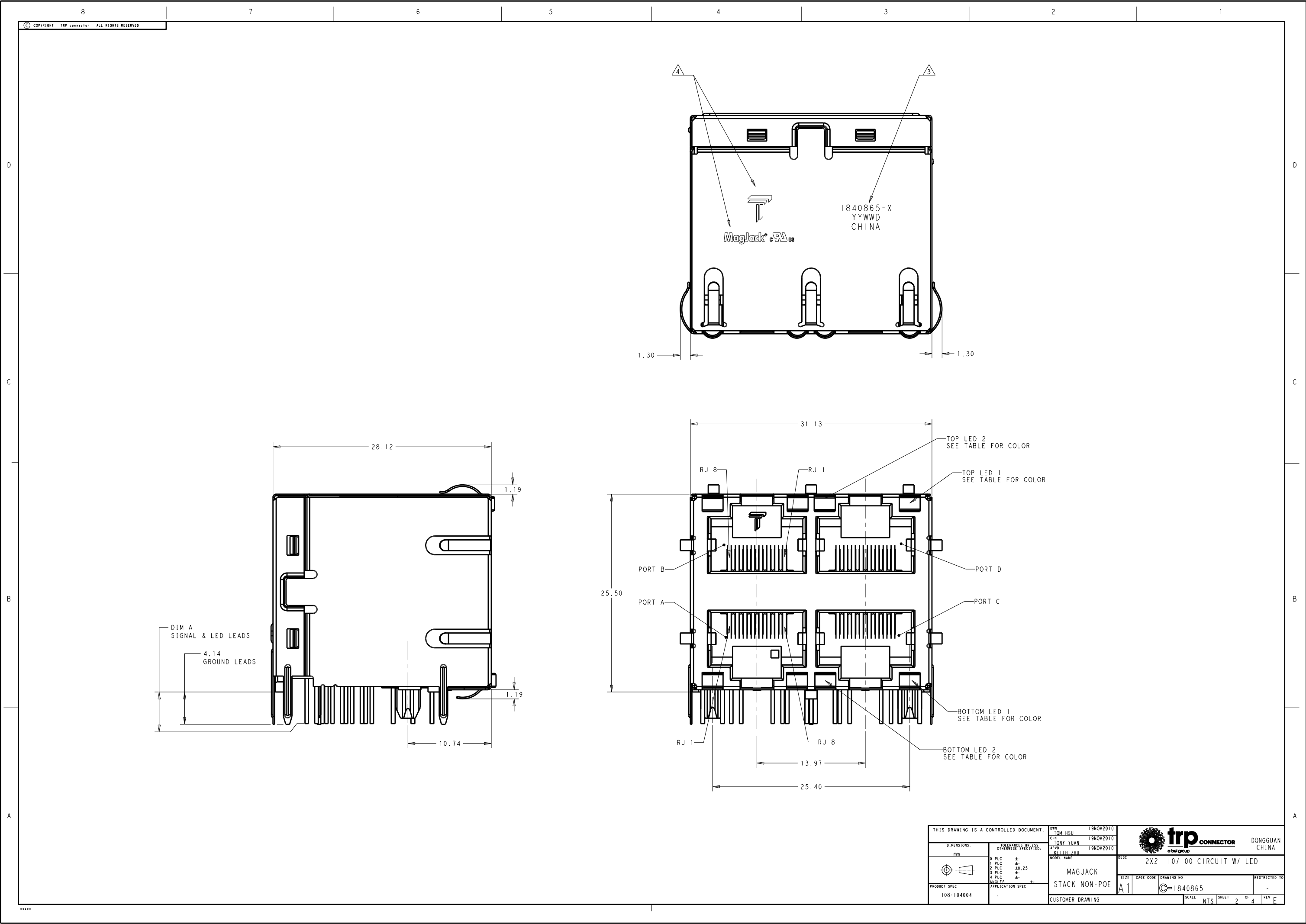
9. BASIC DIMENSION ESTABLISHED BY CUSTOMER, BUT MAY NOT BE
GREATER THAN 5.08mm.


10. LEDs ARE DRIVEN WITH CONSTANT CURRENT AT APPROX 20mA
LED COLOR: DOMINANT WAVELENGTH (λD): GREEN 568 nm TYP. @ IF=20mA
FORWARD VOLTAGE (VF): GREEN 2.2V TYP. @ IF=20mA
DOMINANT WAVELENGTH (λD): YELLOW 588 nm TYP. @ IF=20mA
FORWARD VOLTAGE (VF): YELLOW 2.1V TYP. @ IF=20mA

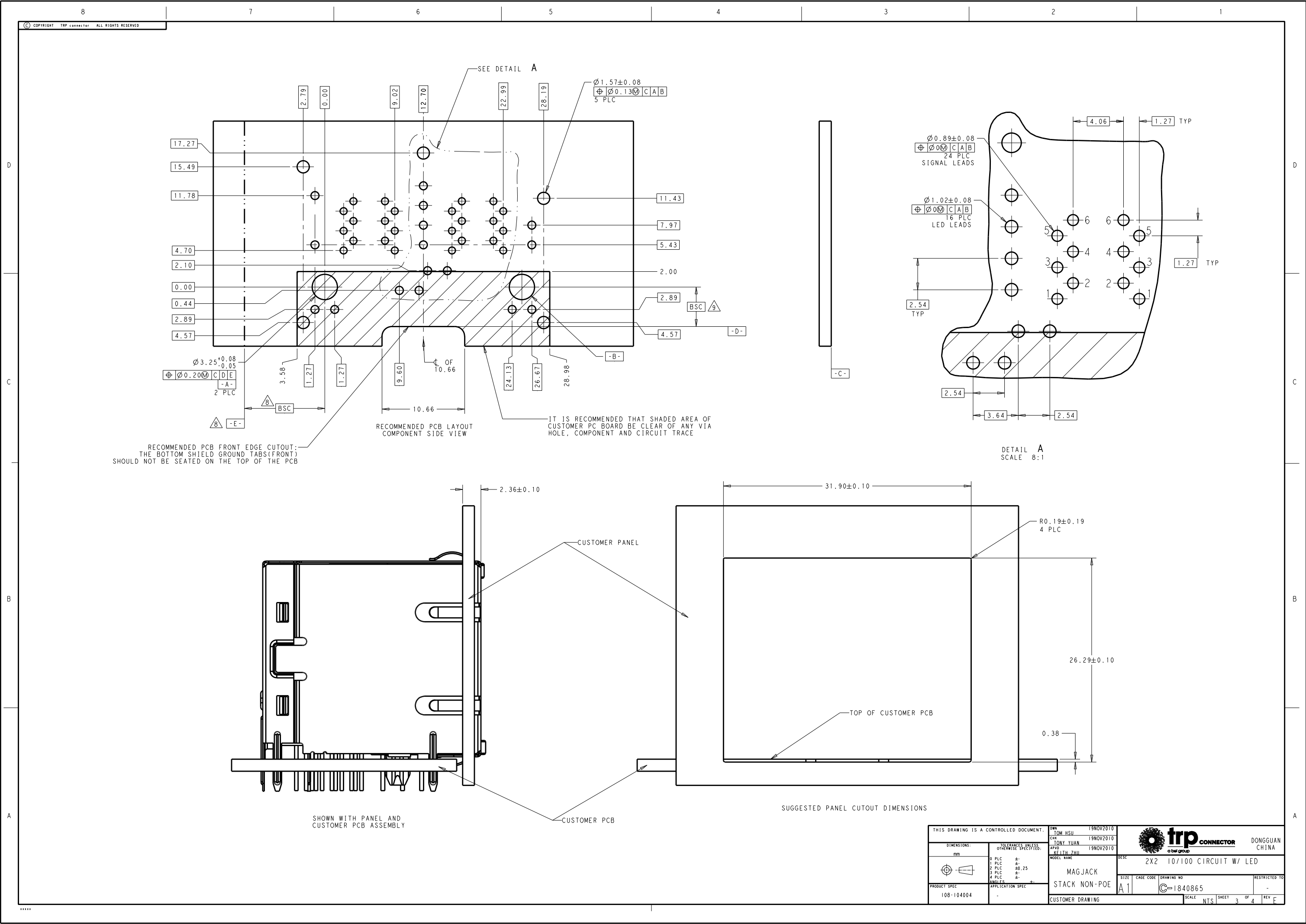
11. THE PARTS ARE RECOMMENDED FOR WAVE SOLDERING PROCESS,
PEAK TEMPERATURE 260°C MAX, 10 SECONDS MAX.



3.04	GRN/YEL	GRN/YEL	GRN/YEL	GRN/YEL	1-1840865-4
4.06	GRN/YEL	GRN/YEL	GRN/YEL	GRN/YEL	1840865-4
DIM A	BOTTOM LED 2	BOTTOM LED 1	TOP LED 2	TOP LED 1	PART NUMBER

THIS DRAWING IS A CONTROLLED DOCUMENT.		OWN TOM HSU 19NOV2010	DESC 2X2 10/100 CIRCUIT W/ LED	
DIMENSIONS: mm		CHK TONY YUAN 19NOV2010	DONGGUAN CHINA	
TOLERANCES UNLESS OTHERWISE SPECIFIED:		APVD KEITH ZHU 19NOV2010	MODEL NAME MAGJACK	
0 PLC ±. 1 PLC ±. 2 PLC ±0.25 3 PLC ±. 4 PLC ±. ANGLES ±.		SIZE A1		
PRODUCT SPEC 108-104004		APPLICATION SPEC -		RESTRICTED TO -
CUSTOMER DRAWING		SCALE NTS		SHEET 4
				REV F



THIS DRAWING IS A CONTROLLED DOCUMENT.		DWN	19NOV2010	 trp CONNECTOR a bel group		DONGGUAN CHINA	
DIMENSIONS:		CHK	19NOV2010				
mm		APVD	19NOV2010				
TOLERANCES UNLESS OTHERWISE SPECIFIED:		MODEL NAME		DESC		SIZE	
0 PLC		MAGJACK		2X2 10/100 CIRCUIT W/ LED		CAGE CODE	
1 PLC		STACK NON-POE		DRAWING NO		RESTRICTED TO	
2 PLC		108-104004		A1		-	
3 PLC		APPLICATION SPEC		SCALE		SHEET	
4 PLC		-		NTS		2	
ANGLES		CUSTOMER DRAWING		REV		F	



THIS DRAWING IS A CONTROLLED DOCUMENT.				DWN TOM HSU 19NOV2010		 trp CONNECTOR a bel group		DONGGUAN CHINA	
DIMENSIONS: mm		TOLERANCES UNLESS OTHERWISE SPECIFIED:		CHK TONY YUAN 19NOV2010		APVD KEITH ZHUI 19NOV2010		MODEL NAME	
		0 PLC ±: 1 PLC ±: 2 PLC ±0.25 3 PLC ±: 4 PLC ±: ANGLES ±: R:		MAGJACK		DESC 2X2 10/100 CIRCUIT W/ LED		SIZE	
PRODUCT SPEC 108-104004		APPLICATION SPEC		STACK NON-POE		CAGE CODE		DRAWING NO C=1840865	
CUSTOMER DRAWING				SCALE NTS		SHEET 3 of 4		REV F	

