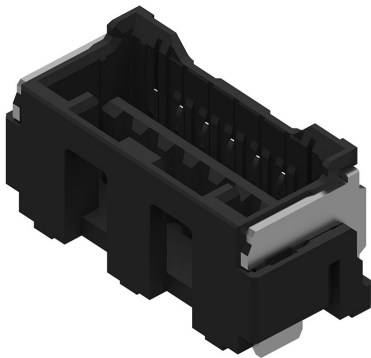




**Part Number :** [5025840761](#)  
**Product Description :** 1.50mm Pitch, CLIK-Mate PCB Receptacle, Single Row, Surface Mount, Vertical, Tin Plating, Positive Lock, with Pick-and-Place Polyimide Tape, 7 Circuits, Black  
**Series Number :** 502584  
**Status :** Active  
**Product Category :** PCB Headers and Receptacles



## Documents & Resources

**Drawings**  
[5025840761\\_sd.pdf](#)

**3D Models and Design Files**  
[5025840761.dxf](#)  
[5025840761.pdf](#)  
[5025840761\\_stp.zip](#)

**Specifications**  
[AS-502578-001-001.pdf](#)  
[SPK-502584-001-001.pdf](#)  
[5025780000-PS-000.pdf](#)  
[5025781000-PS-000.pdf](#)

## Product Environment Compliance

### Compliance

GADSL/IMDS	Compliant with Exemption 44; 34; 33
China RoHS	
EU ELV	Not Relevant
Low-Halogen Status	Not Low-Halogen per IEC 61249-2-21
REACH SVHC	Not Contained per D(2024)6225-DC (07 Nov 2024)
EU RoHS	Compliant per EU 2015/863

### [Multiple Part Product Compliance Statements](#)

- Eu RoHS
- REACH SVHC
- Low-Halogen

#### Multiple Part Industry Compliance Documents

- IPC 1752A Class C
- IPC 1752A Class D
- Molex Product Compliance Declaration
- IEC-62474
- chemSHERPA (xml)

#### EU RoHS Certificate of Compliance

---

## Part Details

### General

Status	Active
Category	PCB Headers and Receptacles
Series	502584
Description	1.50mm Pitch, CLIK-Mate PCB Receptacle, Single Row, Surface Mount, Vertical, Tin Plating, Positive Lock, with Pick-and-Place Polyimide Tape, 7 Circuits, Black
Application	Signal, Wire-to-Board
Component Type	PCB Receptacle
Product Name	CLIK-Mate
UPC	883906293017

### Agency

UL	E29179
----	--------

### Electrical

Current - Maximum per Contact	2.0A
Voltage - Maximum	100V

### Physical

Circuits (Loaded)	7
Circuits (maximum)	7
Color - Resin	Black

Durability (mating cycles max)	30
Glow-Wire Capable	No
Guide to Mating Part	No
Keying to Mating Part	None
Lock to Mating Part	Yes
Mated Height	9.70mm
Material - Metal	Copper Alloy
Material - Plating Mating	Tin
Net Weight	628.601/mg
Number of Rows	1
Orientation	Vertical
Packaging Type	Embossed Tape on Reel
PCB Locator	No
PCB Retention	Yes
Pitch - Mating Interface	1.50mm
Pitch - Termination Interface	1.50mm
Polarized to Mating Part	Yes
Polarized to PCB	No
Robotic Placement	Vacuum Pick-Up Tape
Stackable	No
Temperature Range - Operating	-40° to +105°C
Termination Interface Style	Surface Mount

---

## Mates With / Use With

### Mates with Part(s)

Description	Part Number
1.50mm Pitch CLIK-Mate Single Row Plug Housings	<u>502578</u>
1.50mm Pitch CLIK-Mate-to-CLIK-Mate Off-the-Shelf (OTS) Cable Assemblies	<u>15135</u>

---

This document was generated on Apr 22, 2025