



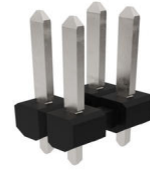
**Part Number :** [757571121](#)

**Product Description :** MX150 Dual Row Header, Vertical, 4 Circuits, 2.5µm Tin (Sn) Plating, 11.20mm Mating Pin Length, 3.05mm PC Tail Length

**Series Number :** 75757

**Status :** Active

**Product Category :** PCB Headers and Receptacles



---

## Documents and Resources

### Drawings

[757571121 sd.pdf](#)

[PK-36518-340-001.pdf](#)

### 3D Models and Design Files

[STEP AP242](#)

[SOLIDWORKS](#)

[Creo](#)

[Symbol and Footprint \(Multi-Format\)](#)


### Specifications

[PS-75757-000-001.pdf](#)

---

## Product Environment Compliance

### Compliance

GADSL/IMDS	Compliant with Exemption 44; 33
China RoHS	 per SJ/T 11365-2006
EU ELV	Not Relevant
Low-Halogen Status	Low-Halogen per IEC 61249-2-21
REACH SVHC	Not Contained per D(2025)7771-DC (04 Feb 2026)
EU RoHS	Compliant per EU 2015/863

### [Compliance Statements](#)

- EU RoHS

- REACH SVHC
- Low-Halogen

#### Industry Documents

- IPC 1752A Class C
- IPC 1752A Class D
- Molex Product Compliance Declaration
- IEC-62474
- chemSHERPA (xml)

#### Substances of Interest

- PFAS

#### EU RoHS Certificate of Compliance

#### Additional Product Compliance Information

## Part Details

### General

Status	Active
Category	PCB Headers and Receptacles
Series	75757
Description	MX150 Dual Row Header, Vertical, 4 Circuits, 2.5µm Tin (Sn) Plating, 11.20mm Mating Pin Length, 3.05mm PC Tail Length
Application	Power, Wire-to-Board, Automotive
Comments	3.50 x 6.00mm dual row grid
Component Type	PCB Header
Product Name	MX150
UPC	822350702041

### Electrical

Current - Maximum per Contact	17.0A
Voltage - Maximum	500V DC

### Physical

Breakaway	No
Circuits (Loaded)	4
Circuits (maximum)	4

Color - Resin	Black
Durability (mating cycles max)	25
First Mate / Last Break	No
Glow-Wire Capable	No
Guide to Mating Part	No
Keying to Mating Part	No
Lock to Mating Part	No
Material - Metal	Brass
Material - Plating Mating	Tin
Material - Plating Termination	Tin
Material - Resin	High Temperature Thermoplastic
Net Weight	0.935/g
Number of Rows	2
Orientation	Vertical
Packaging Type	Tube
PCB Locator	No
PCB Retention	No
PCB Thickness - Recommended	1.57mm
PC Tail Length	3.05mm
Pitch - Mating Interface	3.50mm
Pitch - Termination Interface	3.50mm
Plating min - Mating	2.540µm
Polarized to Mating Part	No
Polarized to PCB	No
Shrouded	Unshrouded
Temperature Range - Operating	-40° to +125°C
Termination Interface Style	Through Hole

### Solder Process Data

Max-Duration	20
Lead-Free Process Capability	REFLOW
Max-Cycle	1
Max-Temp	260

---

### Mates With / Use With

## Mates with Part(s)

Description	Part Number
MX150 Mat-Sealed Dual Row Female Connector Assemblies	<u>33472</u>

---

This document was generated on May 19, 2026