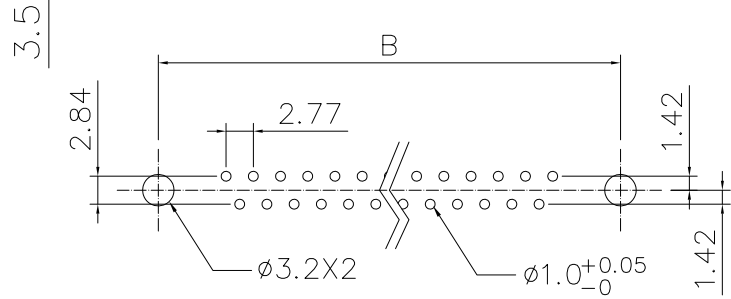
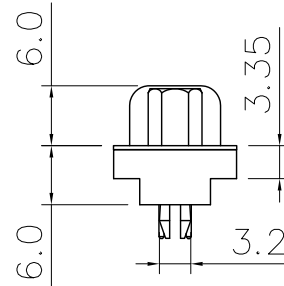
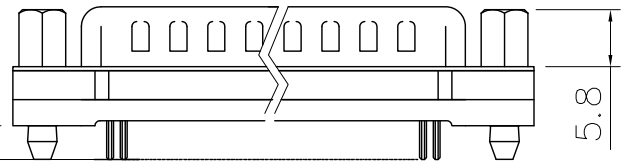
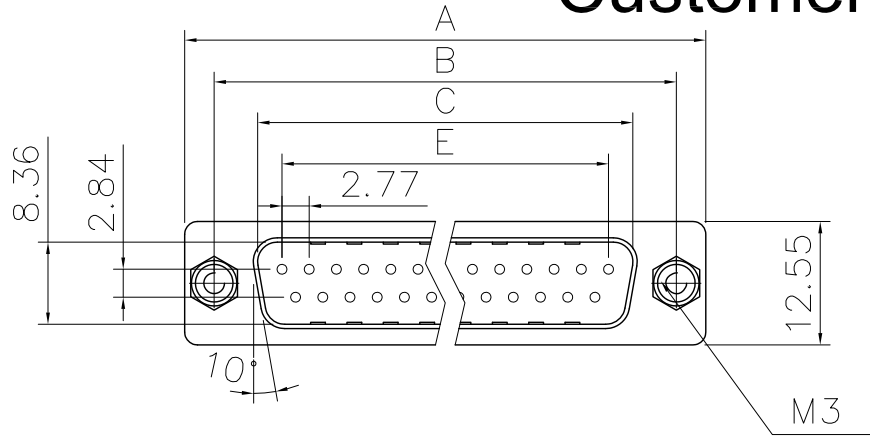


This document is the property of Amphenol Corporation and is delivered on the express condition that it is not to be disclosed, reproduced or used, in whole or in part, for manufacture or sale by anyone other than Amphenol Corporation without its prior consent, & that no right is granted to disclose or to use any information in this document.

Customer drawing



Recommended PCB Layout
Tolerance: $\pm 0.05\text{mm}$

Dimensions

Positions	A	B	C	E
9	30.81	24.99	16.92	11.08
15	39.20	33.30	25.25	19.39
25	53.05	47.04	38.96	33.24
37	69.40	63.50	55.42	49.86

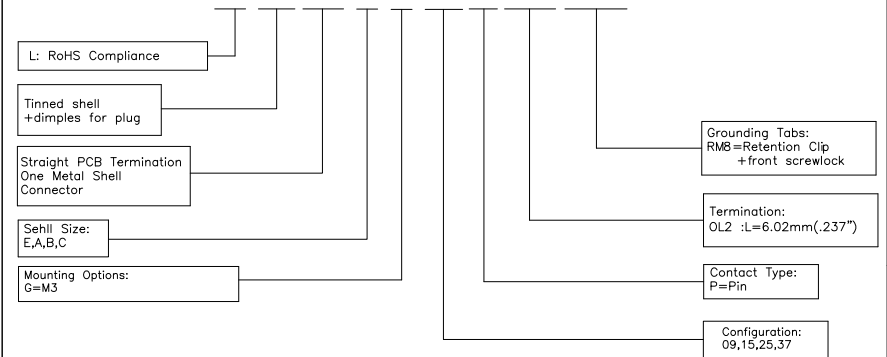
REVISIONS				
SYM	ECN	DESCRIPTION	DATE	APPROVED
1	HK--	First Release Drawing	02/11/09	IP
2	HK--	Update the Drawing	04/23/13	IP

D-SUB TECHNICAL DATA

SHELL: Steel, 100u" Tin Over 50u" min nickel over 50u" min Copper
 BODY: PBT UL 94V-0
 CONTACTS: Copper alloy,
 15u" gold over 50u" min nickel on contact area.
 100u" min tin over 50u" min nickel on solder area.
 Boardlock: Brass, 100u" min Tin Plated
 Screwlock: Brass, 100u" min Nickel Plated
 ELECTRICAL: Contact Resistance :
 20 Milliohms Max. at 1 AMP DC.
 Insulation Resistance : 1000
 megohms at 500 VDC
 Dielectric Withstanding Voltage :
 1000 VAC/rms 60Hz for 1 minute
 Current Rating : 3AMP
 Volatge Rating:250 VAC/rms 60Hz
 MARKING: Amphenol...(Series No.)
 Commercial reference
 Manufacturing date

PRODUCT CODE

L 777 TS X G XX P OL2 RM8



UNLESS OTHERWISE SPECIFIED TOLERANCES		APPROVAL		DATE
U.S.	METRIC	DRAWN	Checked	DATE
.X	+/-	Felix Liu	4/23/13	
.XX	+/-	Tony Tang	4/23/13	
.XXX	+/-			
FRACTIONS	+/-			
ANGLES	+/-			
FOR MATERIALS AND FINISHES SEE NOTES		DRAWING FILE :		
REMOVE SHARP EDGES		ANGLE OF PROJECTION		
DIMENSIONS				
U.S.	INCHES			
METRIC	MM			

Amphenol		
Amphenol East Asia Limited		
TITLE		
D-SUB connector,TS series		
SIZE	DRAWING NO.	REV.
A4	C L777TSXGXXPOL2RM8	2
SCALE	NONE	SHEET 1 OF 1