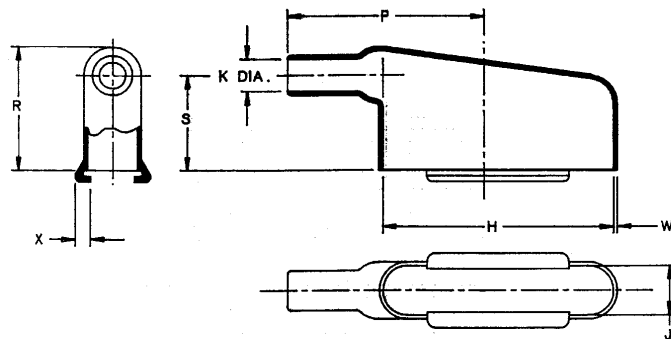


AS SUPPLIED



AFTER UNRESTRICTED RECOVERY

NOTES:

- ALL DIMENSIONS ARE IN INCHES.
- DIMENSIONS APPEARING IN TABLE ARE AS FOLLOWS:
a - AS SUPPLIED
b - AFTER UNRESTRICTED RECOVERY
- COATING IS STANDARD. AS SUPPLIED DIMENSIONS APPEARING IN TABLE ARE FOR UNCOATED PARTS WHEN COATING IS ADDED, ENTRY DIAMETERS WILL BE REDUCED BY .06 MAX. PART IS COATED THROUGHOUT INCLUDING LIPS.

PART NUMBER	H		J		K		P	R	S	W	X
	MIN	±5%	MIN	±5%	MIN	MAX	±10%	±10%	±10%	±20%	±20%
234A611-X-03/42	.73	.80	.63	.42	.63	.16	1.02	.85	.60	.04	.12
234A621-X-03/42	.65	1.11	.75	.42	.75	.21	1.21	.97	.73	.04	.12
234A632-X-03/42	1.15	1.66	1.15	.42	1.15	.29	1.69	1.10	.87	.04	.12
234A642-X-03/42	1.35	2.31	1.35	.42	1.35	.34	2.10	1.20	1.00	.04	.12
234A652-X-03/42	1.48	2.28	1.48	.54	1.48	.42	2.20	1.27	1.00	.04	.12
234A661-X-03/42	.63	.80	.63	.42	.63	.15	1.02	.73	.48	.04	.12
234A671-X-03/42	.75	1.11	.75	.42	.75	.20	1.21	.78	.53	.04	.12

ORDERING INFORMATION:

BASE PART NUMBER 234A6XX -X -03 /42

MATERIAL DASH NUMBER
-3 POLYOLEFIN, RT-301
-4 FLEX POLY, RT-1304

MODIFICATION NUMBER

ADHESIVE SLASH NUMBER
/42 (S-1017 ADHESIVE)

If this document is printed it becomes uncontrolled.
Check for the latest revision.

SPECIFICATION CONTROL DRAWING (LIMITED DISTRIBUTION)

THIS DRAWING AND THE INFORMATION SET FORTH HEREON ARE THE PROPERTY OF RAYCHEM CORPORATION, AND ARE TO BE HELD IN TRUST AND CONFIDENCE. PUBLICATION, DUPLICATION, DISCLOSURE, OR USE FOR ANY PURPOSE NOT EXPRESSLY AUTHORIZED IN WRITING BY RAYCHEM CORPORATION IS PROHIBITED.		DRAWN	J. BITTER
		CHECKED	SCT
		DESIGN APPROVED	F. J. Bitter
		APPROVED BY	
		MANUFACTURING	Paul Miller
		QUALITY CONTROL	Quinn 4/10/87
		SPECIFICATION	Paul Miller
		TECHNICAL SERVICES	J. Kuster 4/16/87
		PRODUCT MANAGEMENT	William Polak 4/16/87
DO NOT SCALE THIS DRAWING		<div> <div> Raychem </div> <div> RAYCHEM CORPORATION 300 CONSTITUTION DRIVE MENLO PARK, CALIFORNIA 94025 </div> </div>	
		TITLE BOOT, RECTANGULAR SUBMINIATURE, 90° END ENTRY, OVEREXPANDED	
		FSCM CODE NO. 00000	DWG NO. 234A611-X-03/42 THRU 234A671-X-03/42
		SIZE B	DATE 16 APRIL 1987 SHEET 1 OF 1