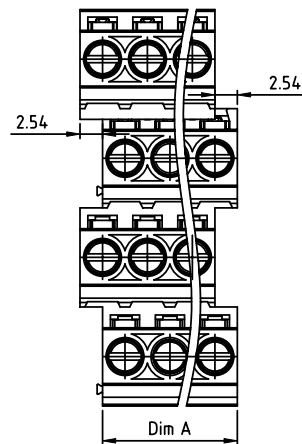


PRODUCT NUMBER	PITCH
Y1xx21x100J0G	5.08 mm



## DIMENSION

Dim A=N/4x5.08

Dim B=(N/4-1)x5.08

N=Number of poles

Poles	Tolerance
8poles~24poles	±0.15
28poles~48poles	±0.25
52poles~72poles	±0.30
76poles~96poles	±0.40

PART NO.: Y1 xx 21 x 1 00J0 G

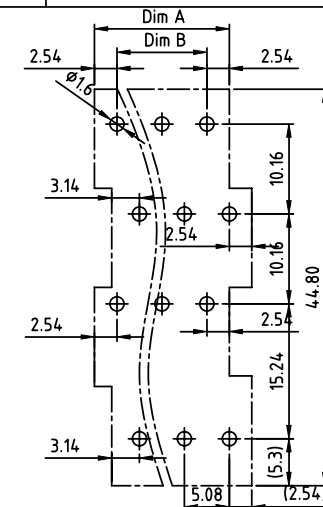
End stackable

No. of poles  
08 4x2 poles  
12 4x3 poles  
...  
96 4x24 poles

Color

0 Black (RAL9005)  
2 Red (RAL3001/D)  
3 Orange(RAL2011/P)  
4 Yellow(RAL1018/A)  
5 Green(RAL6018/T)  
6 Blue (RAL5015/A)  
8 Grey(RAL7035/D)  
9 White(RAL1102)  
C Green(RAL6018/U)

RoHS compliant  
(lead<4%)  
In copper Alloy



## RECOMMENDED P.C.B LAYOUT

## TOP VIEW

Material:

- Item ① Terminal housing : Thermoplastic (UL94V-0)(YG5.08)
- Item ② Terminal housing : Thermoplastic (UL94V-0)(YH5.08)
- Item ③ Terminal screw: Steel Zinc plating "-" slot type
- Item ④ Clamp : Brass , Ni plating
- Item ⑤ Solder pin1 : Brass,Tin plated
- Item ⑥ Solder pin2 : Brass,Tin plated
- Item ⑦ Solder pin3 : Brass,Tin plated
- Item ⑧ Solder pin4 : Brass,Tin plated

Electrical cULus

●Voltage rating: 300VAC

●Current rating: 15A

●Wire range:

●Solid wire(AWG): 12-28

●Stranded wire(AWG): 12-28

●Torque(Lb-In): 4.3

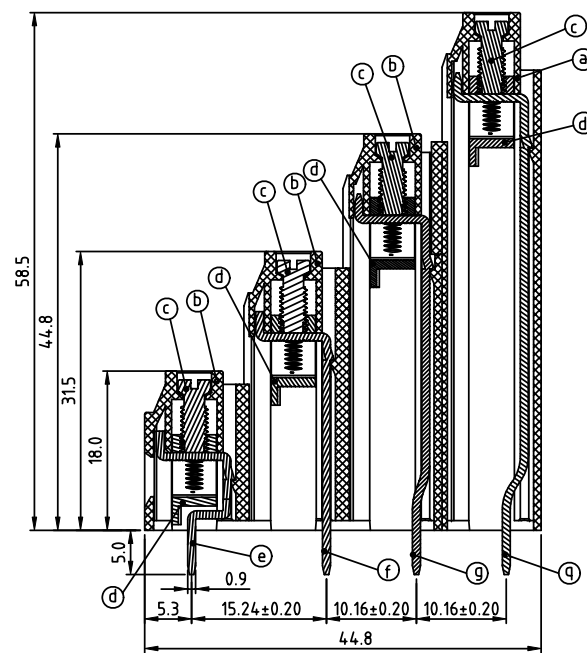
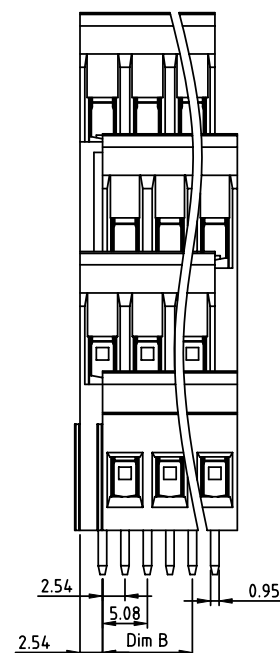
●Screw: M3

●Wire strip length: 6-7mm

●Withstanding Voltage: 1.6KV

●Operating temperature: -40°C to +115°C

●Soldering temperature: 260°C±5°C/5 Sec



mat'l. code				surface	tolerance	projection	product family
ltr ecn no dr date				ASME Y14.5	ASME Y14.5	ASME Y14.5	TERMINAL BLOCK
				tolerances unless otherwise specified		MM	
				angles	X±0.5		title
				flatness	X.X±0.3		TERMINAL BLOCK
				X°±1°	X.XX±0.1		scale
				dr	EVIN ZHONG	041114	FCI
				enr	EVIN ZHONG	041114	
				chr	HANKE FENG	041114	
				appd	SHI JUN	041114	
sheet index	revision	A	1				type
	sheet						CUSTOMER Drawing