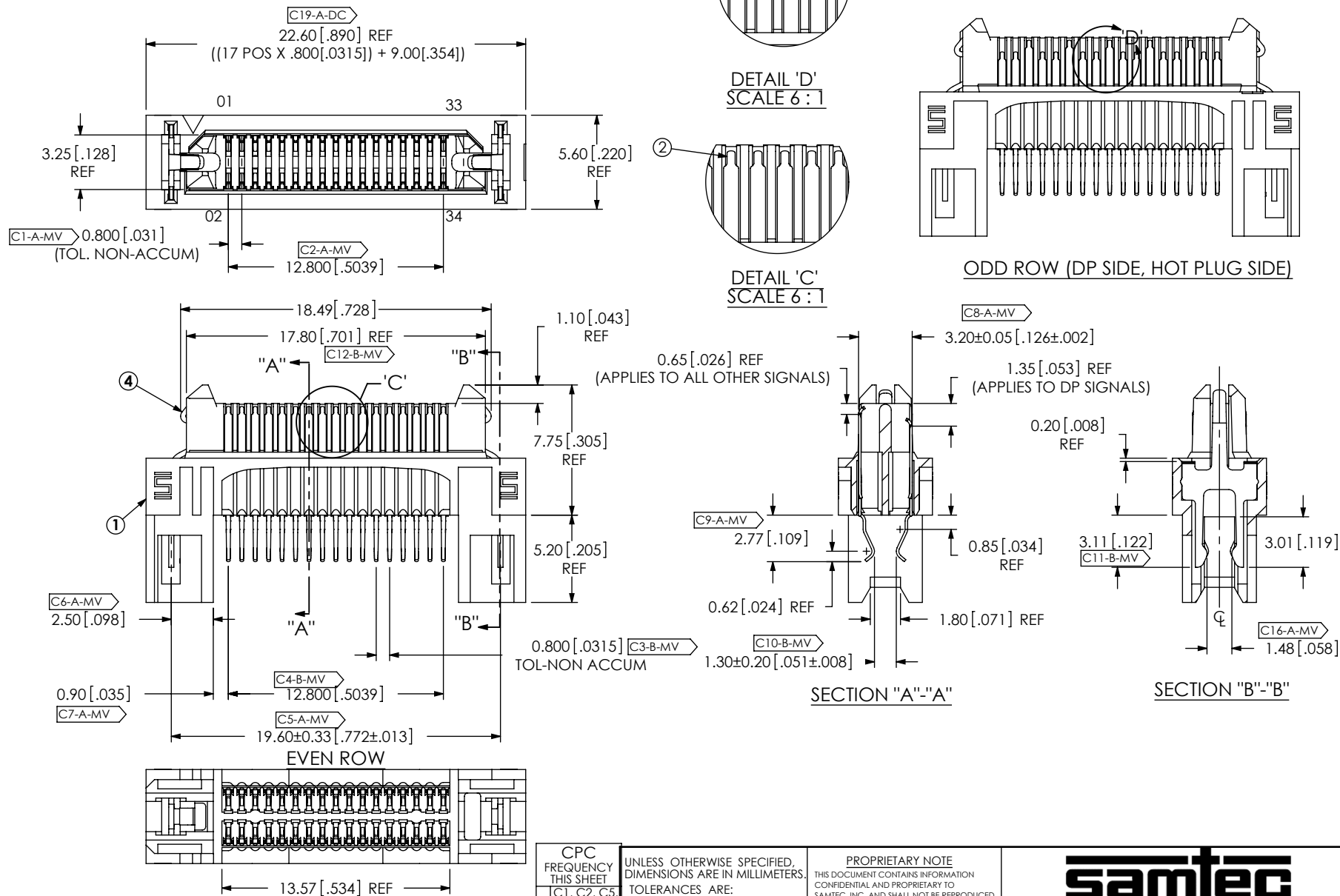


## REVISION

A	TW	J HENRY
9/9/2013	ECN-211210	
RELEASE FOR PRODUCTION		

## NOTES:

1. ITEM 4 IS NOT AVAILABLE AS STANDARD.
2. [C-X-XX-XX] REPRESENTS A CRITICAL DIMENSION.
3. MAXIMUM BURR ALLOWANCE: .038[.0015].
4. MINIMUM PUSHOUT FORCE: 2.22N [.5 LB].
5. PARTS TO BE PACKAGED IN TRAYS.



ITEM NO.	PART NUMBER	QUANTITY	MATERIAL
1	ERM8-017-01-S-D-EM2	1.0000	VECTRA E130i, COLOR:BLACK
2	T-1M47-01-S	17.000	PHOS BRONZE, 521 HT
3	T-1M47-03-S	17.000	PHOS BRONZE, 521 HT
4	WT-29-01-F	2.0000	BeCu #25, 1/2 HT
5	TY-ASP122	1.0000	BLACK HIPS

CPC  
FREQUENCY  
THIS SHEET

A	C1, C2, C5, C6, C8, C9, C16, C19, C17
B	C3, C4, C10, C11
F	
D	

UNLESS OTHERWISE SPECIFIED, DIMENSIONS ARE IN MILLIMETERS.

## TOLERANCES ARE:

DECIMALS	ANGLES
.X: $\pm 3[.01]$	2°
.XX: $\pm 13[.005]$	
.XXX: $\pm 051[.0020]$	

## PROPRIETARY NOTE

THIS DOCUMENT CONTAINS INFORMATION CONFIDENTIAL AND PROPRIETARY TO SAMTEC, INC. AND SHALL NOT BE REPRODUCED OR TRANSFERRED TO OTHER DOCUMENTS OR DISCLOSED TO OTHERS OR USED FOR ANY PURPOSE OTHER THAN THAT WHICH IT WAS OBTAINED WITHOUT THE EXPRESSED WRITTEN CONSENT OF SAMTEC, INC.

PLATING:  
 CONTACT AREA: .000030 GOLD OVER .000050 NICKEL  
 REMAINDER: .000200 REF TIN OVER .000050 NICKEL  
 LATCHES: .000003 GOLD OVER .000050 NICKEL

F:\dwg\sw\asp\137000\ASP-137974-02.SLDDRW

DO NOT SCALE DRAWING

SHEET SCALE: 3:1

DESCRIPTION:

# samtec

520 PARK EAST BLVD, NEW ALBANY, IN 47150  
 PHONE: 812-944-6733 FAX: 812-948-5047  
 e-Mail: info@SAMTEC.com code 55322

DWG. NO.

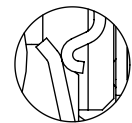
MODIFIED ERM8 ASSEMBLY

ASP-137974-02

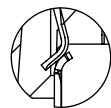
BY: WHELAN

09/10/13

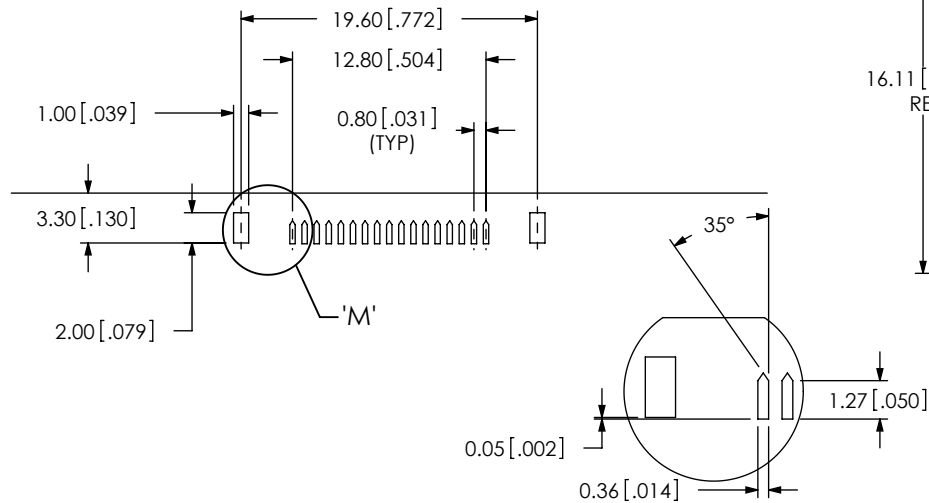
SHEET 1 OF 2



DETAIL 'G'  
SCALE 6 : 1

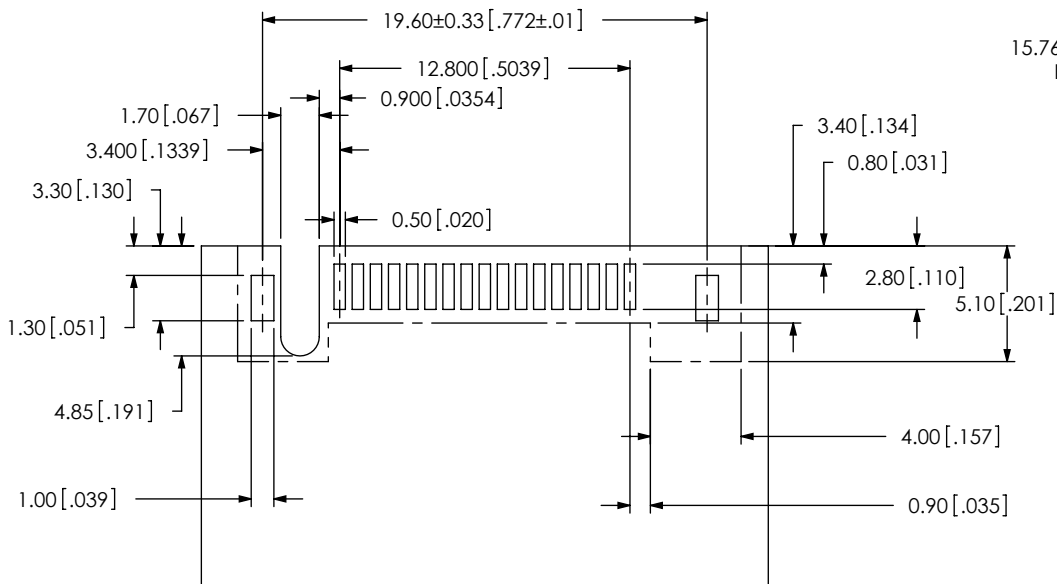


DETAIL 'H'  
SCALE 6 : 1

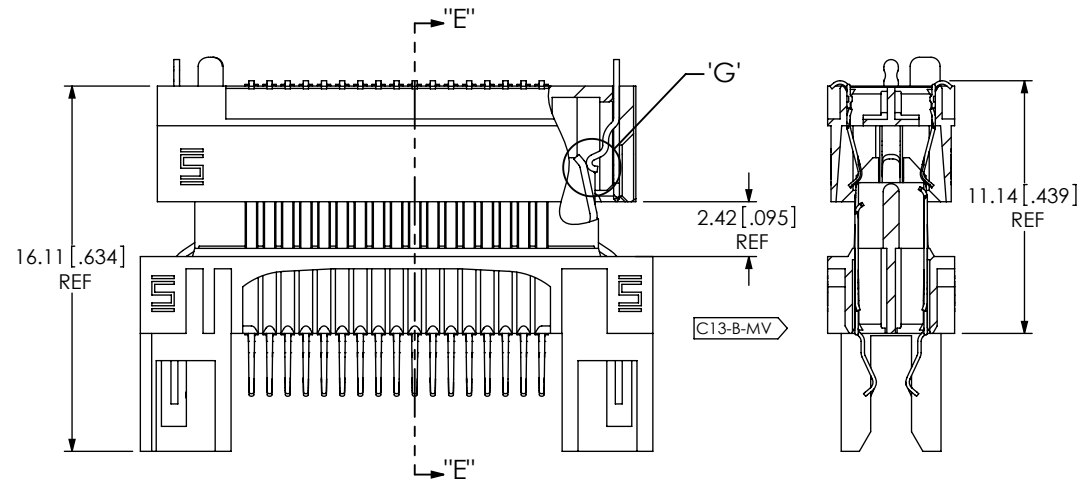


RECOMMENDED STENCIL LAYOUT

DETAIL 'M'  
SCALE 4 : 1

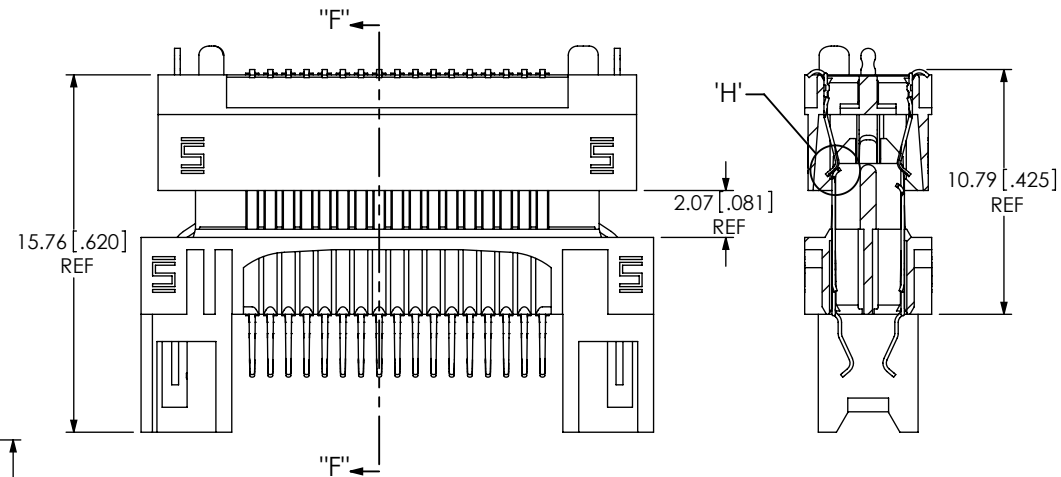


RECOMMENDED PCB LAYOUT



LATCH ENGAGING VIEW

SECTION "E"- "E"



PIN ENGAGING VIEW

SECTION "F"- "F"

CPC FREQUENCY THIS SHEET	
A	
B	C13
F	
D	

**PROPRIETARY NOTE**  
THIS DOCUMENT CONTAINS INFORMATION  
CONFIDENTIAL AND PROPRIETARY TO  
SAMTEC, INC. AND SHALL NOT BE REPRODUCED  
OR TRANSFERRED TO OTHER DOCUMENTS OR  
DISCLOSED TO OTHERS OR USED FOR ANY  
PURPOSE OTHER THAN THAT WHICH IT WAS  
OBTAINED WITHOUT THE EXPRESSED WRITTEN  
CONSENT OF SAMTEC, INC.

SHEET SCALE: 3:1

**samtec**

520 PARK EAST BLVD, NEW ALBANY, IN 47150  
PHONE: 812-944-6733 FAX: 812-948-5047  
e-Mail info@SAMTEC.com code 55322

DESCRIPTION:  
MODIFIED ERM8 ASSEMBLY

DWG. NO.  
ASP-137974-02

BY:WHELAN 09/10/13 SHEET 2 OF 2