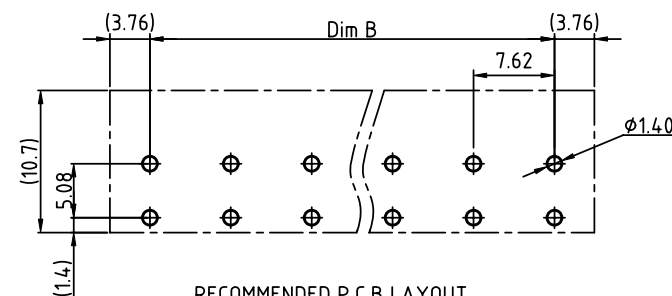
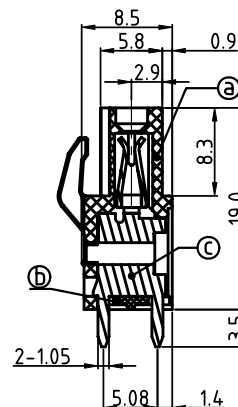
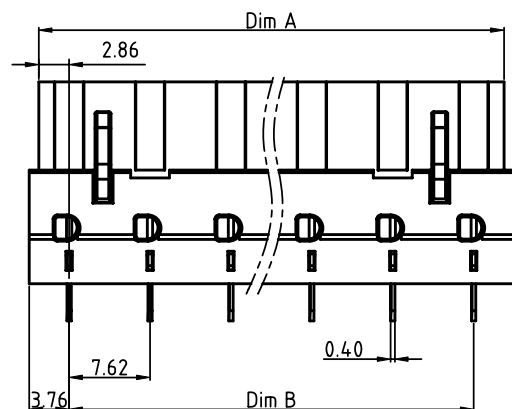
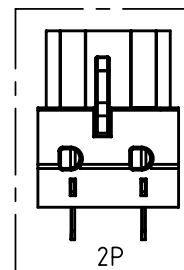
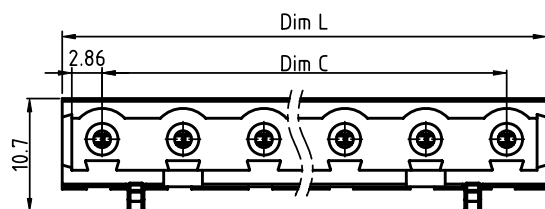


PRODUCT NUMBER

PITCH

V7xx01x000J0G

7.62 mm

RECOMMENDED P.C.B LAYOUT
TOP VIEW

Material:

- Item③Terminal body:Thermoplastic (UL94V-0)
- Item④Terminal Cover:Thermoplastic (UL94V-0)
- Item⑤Female contact:High conductivity copper,Tin plated

Electrical cULus

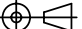


- Voltage rating: 300VAC
- Current rating: 20A
- Withstanding Voltage: 1.6kv
- Operating temperature: -40°C to +115°C
- Soldering temperature: 260°C±5°C/5 Sec
- Safety Approval: cULus

N=Number of poles
 Dim L=(N-1)×7.62+7.52
 Dim A=N×7.62-1.9
 Dim B=(N-1)×7.62
 Dim C=(N-1)×7.62

poles	Tolerance
2-6p	±0.15
7-12p	±0.20
13-16p	±0.30

PART NO.: V7 xx 0 1 x 0 00J0 G

Solid block	No. of poles	Color	RoHS compliant
0	2	Black (RAL9005)	(lead<4%)
2	3	Red (RAL3001/D)	In copper Alloy
03	4	Orange(RAL2011/P)	
...	5	Yellow(RAL1018/A)	
16	6	Green(RAL6018/T)	
...	8	Blue (RAL5015/A)	
16	9	Grey(RAL7035/D)	
...	9	White(RAL1102)	
...	16	Green(RAL6018/U)	

mat'l. code				surface ASME Y14.5		tolerance ASME Y14.5		projection		product family TERMINAL BLOCK																								
ltr		ecn		no		dr		date		tolerances unless otherwise specified							title																	
										angles linear X.±0.5 X.X±0.3 X.XX±0.1							TERMINAL BLOCK PLUGGABLE PCB PLUG,VERTICAL																	
										scale							dwg no					sheet 1 of 1					size							
										dr							EVIN ZHONG		050314		V7xx01x000J0G					A								
										enrg							EVIN ZHONG		050314															
										chr							HANKE FENG		050314															
										appd					SHI JUN		050314																	
sheet index		revision sheet		A		1																												