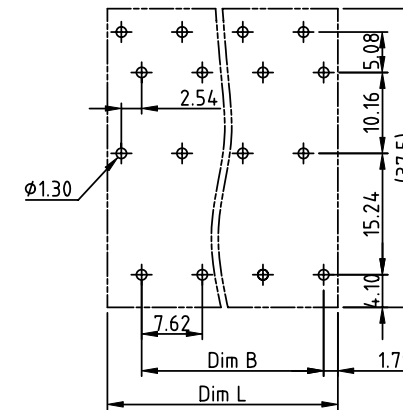
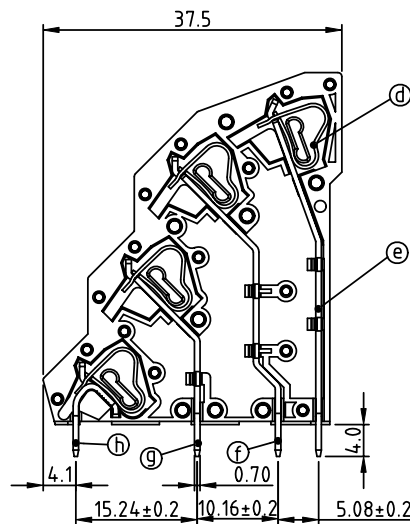
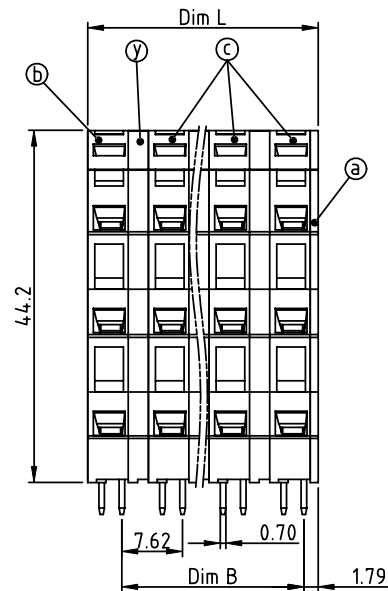


PRODUCT NUMBER	PITCH
HSxx50x100J0G	7.62mm



RECOMMENDED P.C.B LAYOUT  
TOP VIEW

## Material:

- Item ① Insulator (Cover): Thermoplastic (UL94V-0)
- Item ② Insulator (Side housing): Thermoplastic (UL94V-0)
- Item ③ Insulator (Middle housing): Thermoplastic (UL94V-0)
- Item ④ Spring clamp: Stainless steel
- Item ⑤ Solder Pin (The fourth layer): Brass, Tin plated
- Item ⑥ Solder Pin (The third layer): Brass, Tin plated
- Item ⑦ Solder Pin (The second layer): Brass, Tin plated
- Item ⑧ Solder Pin (The first layer): Brass, Tin plated
- Item ⑨ Insulator (pad board): Thermoplastic (UL94V-0)

## Electrical:

- Voltage rating: cULus 300V
- Current rating: 10A
- Wire range:
- Solid wire (AWG): 12-28
- Stranded wire (AWG): 12-28
- Wire strip length: 6-7mm
- Withstanding Voltage: 1.6KV
- Operating temperature: -40°C to +115°C
- Soldering temperature: 260°C±5°C/5 Sec
- Safety Approval: cULus

N=Number of poles  
Dim L=N/4×7.62+1.0  
Dim B=(N/4-1)×7.62

Poles	Dim L	Dim B
4×2p-4×4p	±0.15	±0.15
4×5p-4×8p	±0.25	±0.25
4×9p-4×12p	±0.35	±0.30
4×12p-4×16p	±0.45	±0.40

PART NO.: HS xx 50 x 100J0 G

No. of poles	Color	RoHS compliant
End Stackable	0 Black (RAL9005)	(lead<4%) In copper Alloy
08 4x2 poles	2 Red (RAL3001/D)	
12 4x3 poles	3 Orange (RAL2011/P)	
...	4 Yellow (RAL1018/A)	
...	5 Green (RAL6018/T)	
64 4x16 poles	6 Blue (RAL5015/A)	
	8 Grey (RAL7004/P)	
	9 White (RAL1102)	
	C Multiple colors	

mat'l. code				surface ASME Y14.5		tolerance ASME Y14.5		projection		product family									
ltr				ecn no		dr		date		TERMINAL BLOCK									
										title									
										TERMINAL BLOCK									
										SPRING CLAMP, 45D WIRE INLET, 4-LEVEL, INTERFACE TYPE									
										scale									
										dwg no									
										sheet 1 of 1									
										HSxx50x100JOG									
										type									
										CUSTOMER Drawing									
sheet index				revision sheet		A 1													