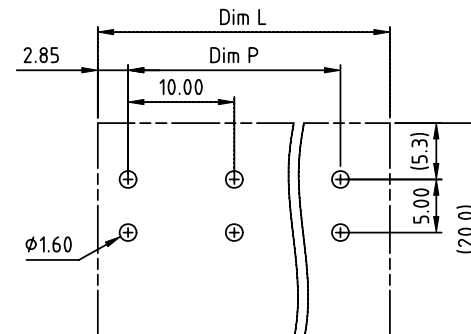
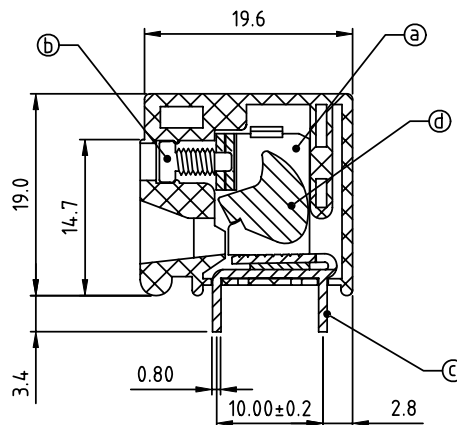
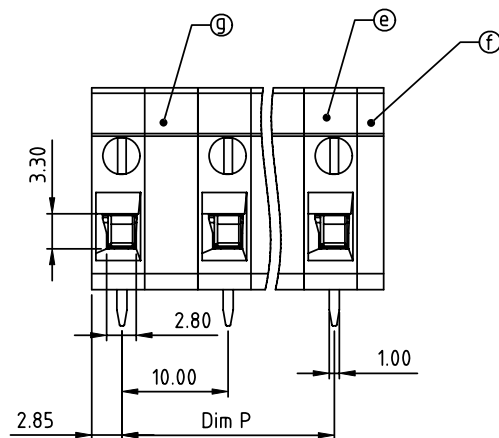
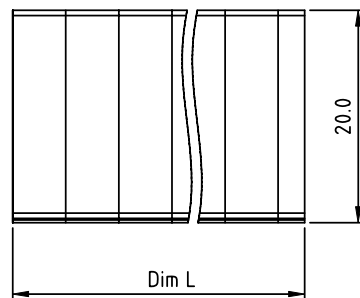


PRODUCT NUMBER	PITCH
TRxx15x1A0J0G	10.00mm




RECOMMENDED P.C.B LAYOUT  
TOP VIEW

#### Material:

- Item ① Terminal body: steel stamping clamp Zinc plating
- Item ② Terminal screw: Steel Zinc plating "-" slot type
- Item ③ Contacts: Brass, Tin plated
- Item ④ Firm wire chunk: steel Zinc plating
- Item ⑤ Terminal housing: Thermoplastic (UL94V-0)
- Item ⑥ Terminal cover: Thermoplastic (UL94V-0)
- Item ⑦ padding block: Thermoplastic (UL94V-0)

#### Electrical cULus

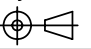
- Voltage rating: 300VAC
- Current rating: 20A
- Wire range:
- Solid wire(AWG): 12-22
- Stranded wire(AWG): 12-22
- Torque(Lb-In): 2.4
- Screw: M2.5
- Wire strip length: 10-11mm
- Withstanding Voltage: 1.6KV
- Operating temperature: -40°C to +115°C
- Soldering temperature: 260°C±5°C/5 Sec
- Safety Approval: 

N=Number of Poles  
Dim L=Nx10.0-2.5  
Dim P=(N-1)x10.0

Poles	2P-4P	5P-8P	9P-12P
Dim L	±0.20	±0.30	±0.40
Dim P	±0.20	±0.25	±0.30

PART NO.: TR xx 1 5 x 1 A 0J0 G

End stackable	No. of poles	Body Color	RoHS compliant (lead<4%) In copper Alloy
02	2 poles	Black (RAL9005)	
03	3 poles	Red (RAL3001/D)	
...	...	Orange(RAL2011/P)	
...	...	4 Yellow(RAL1018/A)	
12	12 poles	5 Green(RAL6018/T)	
		6 Blue (RAL5015/A)	
		8 Grey(RAL7035/D)	
		9 White(RAL1102)	
		C Green(RAL6018/U)	

mat'l. code				surface	tolerance	projection	product family	
ltr ecn no dr date				ASME Y14.5	ASME Y14.5		TERMINAL BLOCK	
				tolerances unless otherwise specified		MM	title	
				angles	X.±0.5		TERMINAL BLOCK	
				flatness	X.X±0.3		WIRE PROTECTOR,90D WIRE INLET	
				X*±1°	X.XX±0.1	scale	dwg no	
				dr	EVIN ZHONG 040114		sheet 1 of 1 size	
				enrg	EVIN ZHONG 040114		TRxx15x1A0J0G	
				chr	HANKE FENG 040114		A4	
				appd	SHI JUN 040114		type	
							CUSTOMER Drawing	
sheet index	revision	A	1					