

# RC-17S1N1290GK - Coupler connector



1601918

<https://www.phoenixcontact.com/us/products/1601918>

Please be informed that the data shown in this PDF document is generated from our online catalog. Please find the complete data in the user documentation. Our general terms of use for downloads are valid.



M23, Coupler connector, series: RC, straight, shielded: yes, Screw locking mechanism, No. of pos.: 17, Direction of rotation: Standard, contact connection type: Socket, Solder cup, cable diameter range: 7.5 mm ... 9.5 mm, coding: N

## Commercial data

Item number	1601918
Packing unit	20 pc
Minimum order quantity	1 pc
Note	Made to order (non-returnable)
Sales key	AB31
Product key	ABRAFG
GTIN	4046356237253
Weight per piece (including packing)	73.7 g
Weight per piece (excluding packing)	70.904 g
Customs tariff number	85366990
Country of origin	DE

# RC-17S1N1290GK - Coupler connector



1601918

<https://www.phoenixcontact.com/us/products/1601918>

## Technical data

### Product properties

Product type	Circular connector (cable-side)
--------------	---------------------------------

### Connector

#### Insulating body

Coding	N
Contact material	CuZn
Contact surface material	Ni/Au
Insertion/withdrawal cycles	50
Connection method	Solder cup
Contact switching type	Socket
Application	Signal
Number of positions	17
Direction of rotation	Standard
Connection profile	17
Number Contact (Contact group 1)	17
Diameter Contact (Contact group 1)	1 mm
Litz wire cross-section min. Contact (Contact group 1)	0.08 mm <sup>2</sup>
Litz wire cross-section max. Contact (Contact group 1)	1 mm <sup>2</sup>
Rated current Contact (Contact group 1)	8 A (for max. connection cross section)
Rated voltage Contact (Contact group 1)	48 V AC
	74 V DC
Rated surge voltage	1.5 kV
Overvoltage category	III
Degree of pollution	3

#### Housing

Thread type	M23
Type of locking	Screw locking mechanism
Pg screw connection	none
Housing material	GD-Zn
Degree of protection (plugged in)	IP67

#### Seal

External cable diameter	7.5 mm ... 9.5 mm
Seal material	NBR

# RC-17S1N1290GK - Coupler connector

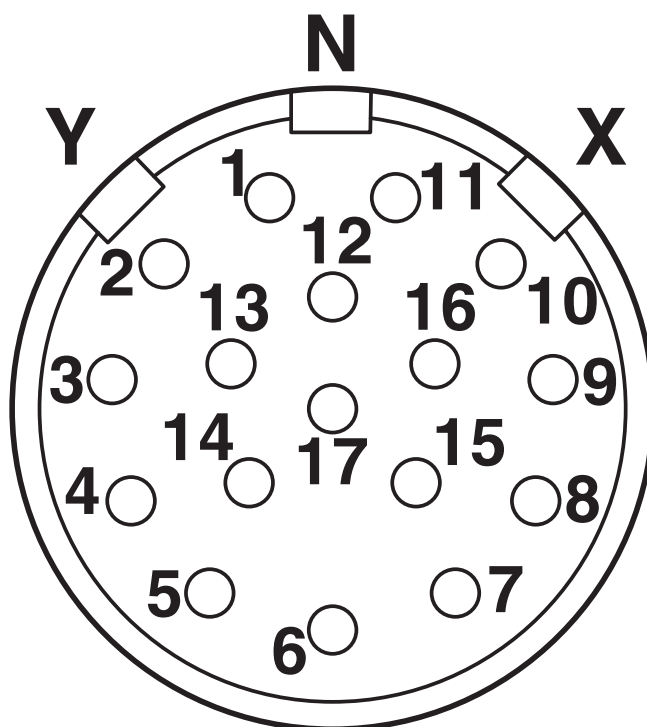
1601918

<https://www.phoenixcontact.com/us/products/1601918>



## Drawings

Schematic diagram



Connector pin assignment

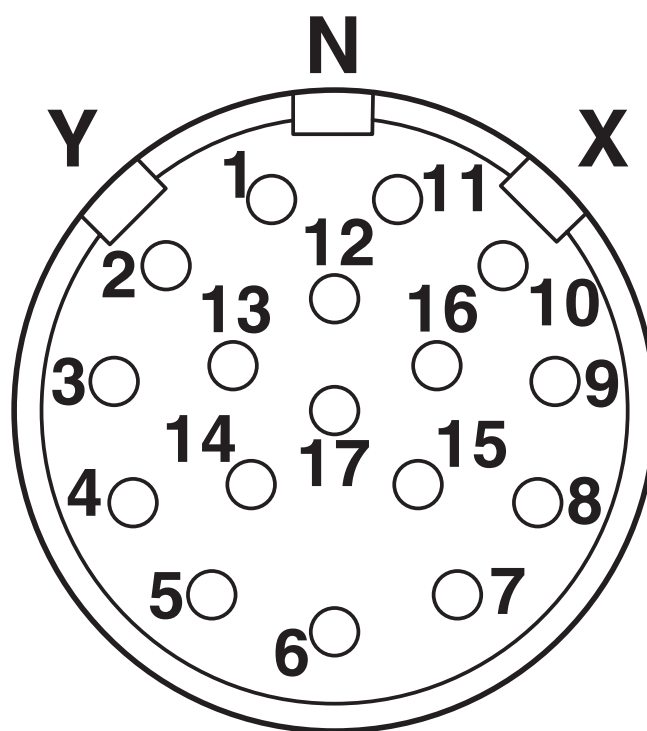
# RC-17S1N1290GK - Coupler connector

1601918

<https://www.phoenixcontact.com/us/products/1601918>



Schematic diagram



Connector pin assignment

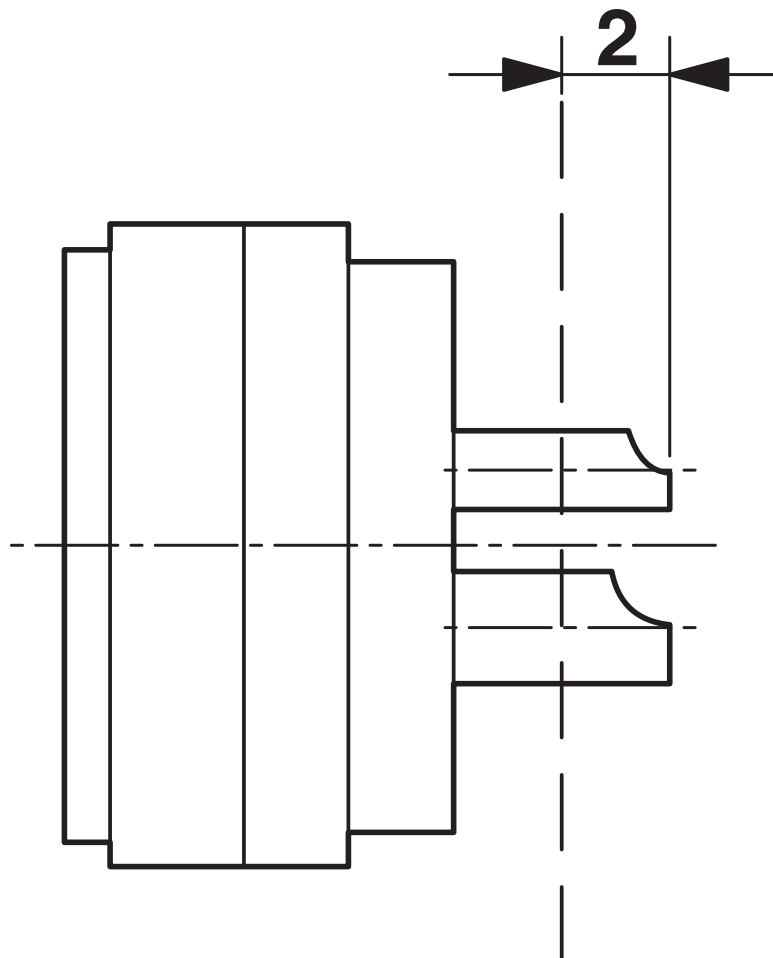
# RC-17S1N1290GK - Coupler connector

1601918

<https://www.phoenixcontact.com/us/products/1601918>



Schematic diagram



Dimensional drawing

# RC-17S1N1290GK - Coupler connector



1601918

<https://www.phoenixcontact.com/us/products/1601918>

## Classifications

### ECLASS

ECLASS-13.0	27440116
ECLASS-15.0	27440116

### ETIM

ETIM 9.0	EC002635
----------	----------

### UNSPSC

UNSPSC 21.0	39121400
-------------	----------

# RC-17S1N1290GK - Coupler connector



1601918

<https://www.phoenixcontact.com/us/products/1601918>

## Environmental product compliance

### EU RoHS

Fulfills EU RoHS substance requirements	Yes
Exemption	6(c)

### China RoHS

Environment friendly use period (EFUP)	EFUP-50
	An article-related China RoHS declaration table can be found in the download area for the respective article under "Manufacturer declaration". For all articles with EFUP-E, no China RoHS declaration table issued and required.

### EU REACH SVHC

REACH candidate substance (CAS No.)	Lead(CAS: 7439-92-1)
SCIP	f1e087fa-97db-470c-ad86-9a9a566e4175

Phoenix Contact 2025 © - all rights reserved

<https://www.phoenixcontact.com>

Phoenix Contact USA  
586 Fulling Mill Road  
Middletown, PA 17057, United States  
(+717) 944-1300  
[info@phoenixcon.com](mailto:info@phoenixcon.com)