



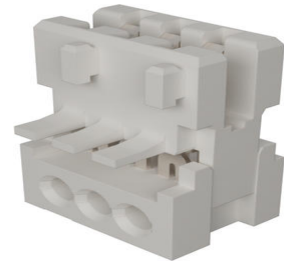
Part Number : [930500007](#)

Product Description : 2.50mm Pitch Appli-Mate RAST 2.5 Female Connector, 3 Circuits, Positions A & C Removed, Open Endwalls, Glow-Wire Capable

Series Number : 93050

Status : Active

Product Category : Connector Housings



Documents and Resources

Drawings

[930500007_sd.pdf](#)

[STEP AP242](#)

[SOLIDWORKS](#)

[Creo](#)

Specifications


[990330008-000.pdf](#)

[PK-90871-001-001.pdf](#)

[PS-99020-0040-001.pdf](#)

Product Environment Compliance

Compliance

GADSL/IMDS	Not Relevant
China RoHS	 per SJ/T 11365-2006
EU ELV	Not Relevant
Low-Halogen Status	Not Low-Halogen per IEC 61249-2-21
REACH SVHC	Contains 1,1'-(Ethane-1,2-diyl)bis[pentabromobenzene] per D(2025)7771-DC (04 Feb 2026)
EU RoHS	Compliant per EU 2015/863

[Compliance Statements](#)

- EU RoHS
- REACH SVHC
- Low-Halogen

Industry Documents

- IPC 1752A Class C
- IPC 1752A Class D
- Molex Product Compliance Declaration
- IEC-62474
- chemSHERPA (xml)

Substances of Interest

- PFAS

EU RoHS Certificate of Compliance

Additional Product Compliance Information

Part Details

General

Status	Active
Category	Connector Housings
Series	93050
Description	2.50mm Pitch Appli-Mate RAST 2.5 Female Connector, 3 Circuits, Positions A & C Removed, Open Endwalls, Glow-Wire Capable
Comments	<p>Various possibilities for temperature range: 4 Amp:-20°C to + 60°C with header 2 Amp:-20°C to +120°C double sided PCB or Header 2 Amp: -20°C to +110°C single sided PCB;</p> <p>This Molex product is manufactured from material that has the following ratings, tested by independent agencies: a) A Glow Wire Ignition Temperature (GWIT) of at least 775 deg C per IEC 60695-2-13. b) A Glow Wire Flammability Index (GWFI) above 850 deg C per IEC 60695-2-12 and hence complies with the requirements set out in the International Standard IEC</p>

	60335-1 5th edition - household and similar electrical appliances - safety, section 30 Resistance to heat and fire. The customers using this product must determine its suitability for use in their particular application through testing or other acceptable means as described in end-product glow-wire flammability test standard IEC 60695-2-11 and any applicable product end-use standard(s). If it is determined during the customer's evaluation of suitability, that higher performance is required, please contact Molex for possible product options.
Product Name	RAST 2.5
UPC	883906038892

Agency

CSA	LR19980
UL	E29179

Electrical

Voltage - Maximum	32V AC
-------------------	--------

Physical

Circuits (Loaded)	3
Circuits (maximum)	3
Color - Resin	Natural (White)
Durability (mating cycles max)	10
Gender	Female
Glow-Wire Capable	Yes
Lock to Mating Part	No
Material - Metal	Phosphor Bronze
Material - Plating Mating	Tin

Material - Plating Termination	Tin
Material - Resin	Polyamide (PA)
Net Weight	771.000/mg
Number of Rows	1
Packaging Type	Tray
Panel Mount	No
Pitch - Mating Interface	2.50mm
Pitch - Termination Interface	2.50mm
Plating min - Mating	1.016µm
Plating min - Termination	1.016µm
Polarized to Mating Part	No
Stackable	No
Temperature Range - Operating	-20° to +110°C, -20° to +120°C, -20° to +60°C
Termination Interface Style	IDT or Pierce
Wire Size (AWG)	22, 24

Solder Process Data

Lead-Free Process Capability	N/A
------------------------------	-----

Mates With / Use With

Mates with Part(s)

Description	Part Number
2.50mm Pitch Appli-Mate RAST 2.5 Vertical Headers	<u>93070</u>

Use with Part(s)

Description	Part Number
Use With	RAST standard Interface

Application Tooling

Global

Description	Part Number
RAST 2.5 and R-Power Semi-Automatic IDC Machine	<u>2166580100</u>
Hand Tool for Appli-Mate RAST 2.5, RAST Signal, and R-Power Connectors	<u>638272900</u>

This document was generated on May 05, 2026