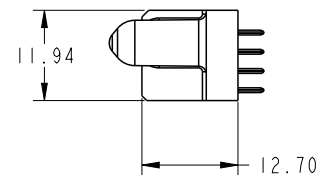
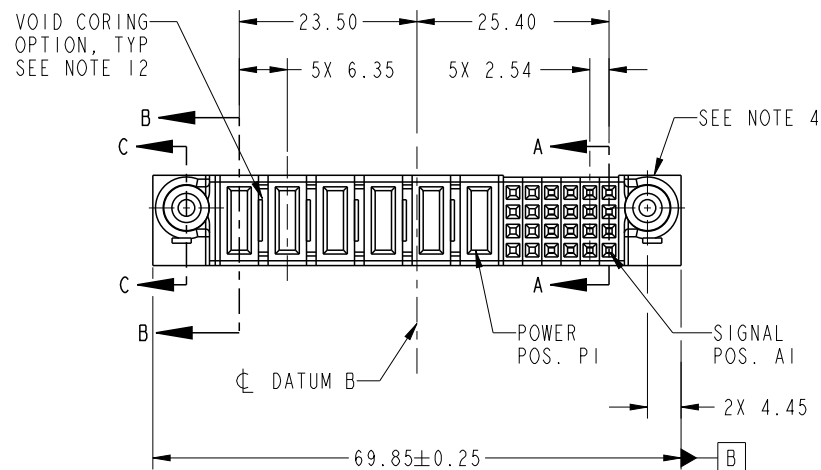


PRODUCT NO.	ROWS	POWER							SIGNAL						
		E2	P6	P5	P4	P3	P2	P1	6	5	4	3	2	1	E1
51940-407-- NOTE: 3	D C B A		PA	PA	PA	PA	PA	PA	X	X	E	E	E	E	
									X	X	E	E	E	E	
									X	X	E	E	E	E	
									X	X	E	E	E	E	



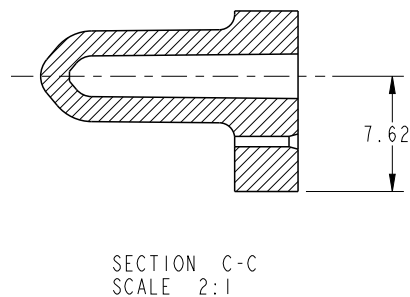
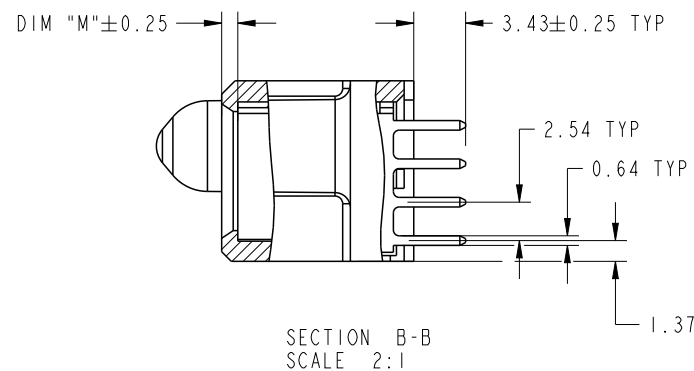
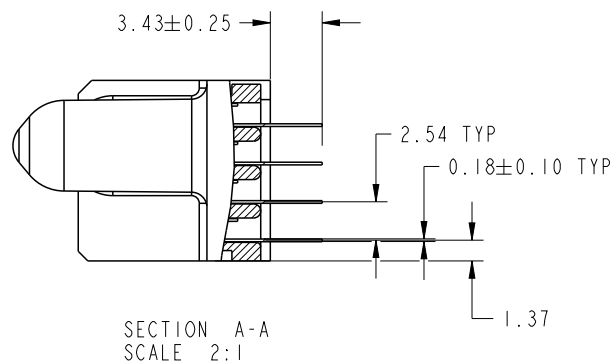
CODE	DIM "M" MATING LENGTH	CONTACT TYPE
E	[N/A]	SIGNAL
PA	[1.07]	POWER
X	[N/A]	[N/A]

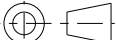


spec ref	SEE NOTES			dr	Guang, Shi	2011/11/15	<div>projection</div> <div></div>	<div>MM</div> <div></div>	size	A4	scale	1:1	
tolerance std	TOLERANCES UNLESS OTHERWISE SPECIFIED			eng	Guang, Shi	2011/12/30			ecn no	-			
SEE NOTES				chr	-	-			-				
				appr	Pei-Ming Zheng	-			product family			PwrBlade	rel level
surface	linear	0.X	±0.5		title	24S + 6P VERTICAL STB RECEPT			dwg no	51940-407		rev	A
		0.XX	±0.25										
		0.XXX	±0.1										
		angular	0°	±2°	www.fci.com	cat. no.	Product - Customer Drw			sheet 1 of 4			

PrintE File - REV C - 2009-06-09

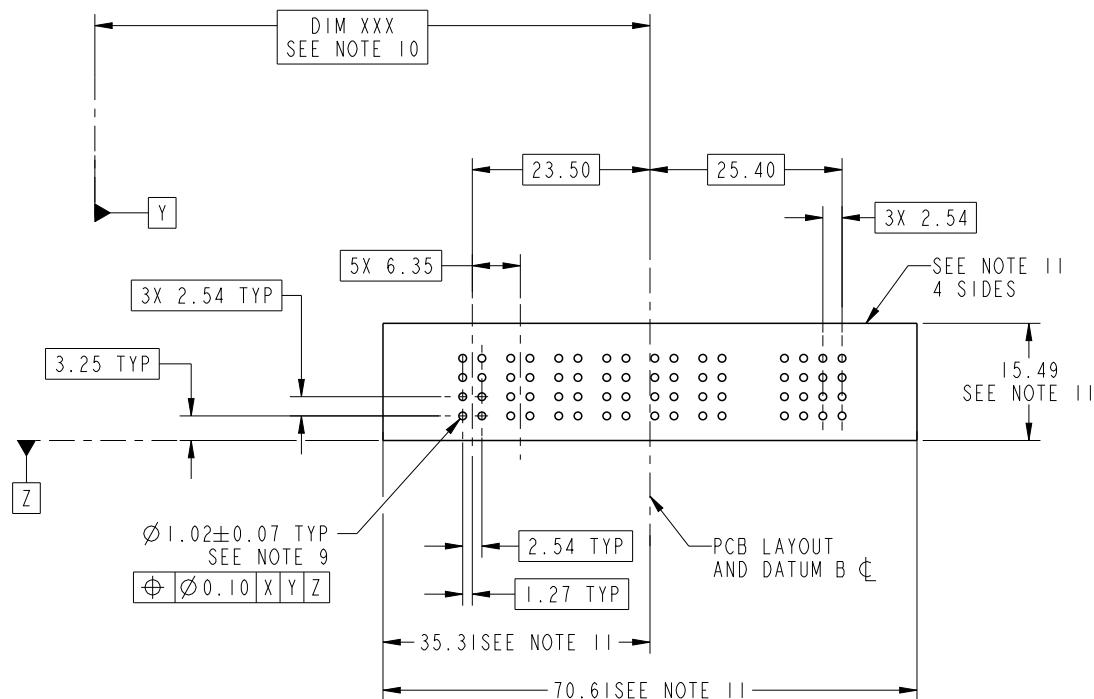
PRODUCT NUMBER

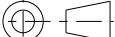


51940-407--  
NOTE: 3



dr	Guang, Shi	2011/11/15	<div>projection</div> <div></div>	<div>MM</div> <div></div>	size	A4	scale	1:1		
eng	Guang, Shi	2011/12/30			ecn no				-	
chr	-	-								
appr	Pei-Ming Zheng	-	product family		PwrBlade	rel level	Released			
		title			24S + 6P	dwg no		51940-407	rev	A
VERTICAL STB RECEPT										
www.fci.com		cat. no.		Product - Customer Drw				sheet 2 of 4		

51940-407--  
NOTE: 3



dr	Guang, Shi	2011/11/15	projection 	MM 	size	A4	scale	1:1
eng	Guang, Shi	2011/12/30			ecn no	-		
chr	-	-			rel level			
appr	Pei-Ming Zheng	-	product family		PwrBlade			
	title 24S + 6P VERTICAL STB RECEIPT			dwg no 51940-407	rev A			
www.fci.com	cat. no.		Product - Customer Drw			sheet 3 of 4		

## PRODUCT NUMBER

51940-407\_\_  
NOTE: 3

## NOTES:

1. DIMENSIONS AND TOLERANCES ARE IN ACCORDANCE WITH  
ASME Y14.5M, 1994 UNLESS OTHERWISE SPECIFIED.

## CONNECTOR NOTES:

② HOUSING MATERIAL: UL 94 V-0 GLASS FILLED HIGH-TEMP THERMOPLASTIC

POWER CONTACT MATERIAL: COPPER ALLOY  
SIGNAL PIN MATERIAL: COPPER ALLOY

3. SEE ITEM 5 & 6 IN PRINT 10064183 FOR PLATING SPEC OF 51940-407 AND 51940-407LF RESPECTIVELY.

④ MANUFACTURER'S NAME, DATE CODE AND OPTIONAL P/N TO APPEAR ON  
THIS SURFACE. THE P/N CAN BE OMITTED IF THERE IS NOT ENOUGH  
SPACE ON THIS SURFACE.

5. PRODUCT SPECIFICATION GS-12-149.  
APPLICATION SPECIFICATION BUS-20-067.

6. PACKAGED IN TRAYS.

## PCB NOTES:

7. ALL HOLE DIAMETERS ARE FINISHED HOLE SIZE.

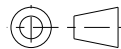


⑧ MOUNTING HOLES, WHERE APPLICABLE, ARE UNPLATED.

⑨  $\varnothing 1.151 \pm 0.025$  DRILLED HOLES PLATED WITH  
0.008 MIN SnPb OR Sn OVER 0.03  
TO 0.08 Cu PLATING TO ACHIEVE  
 $\varnothing 1.02 \pm 0.07$  HOLE.

⑩ "DIM XXX" TO BE DETERMINED BY THE CUSTOMER.

⑪ CONNECTOR KEEP-OUT ZONE.

12. THE VOID CORING IN BETWEEN POWER MODULES, SIGNAL MODULES AND END MODULES ARE  
OPTIONAL AND THE SHAPE MAY BE DIFFERENT FOR OPTIMIZE THE MOLDING PROCESS. THE VOID  
CORING WILL NOT EFFECT TO PRODUCT FUNCTION.

dr	Guang, Shi	2011/11/15	<div>projection</div> <div></div>	<div>MM</div> <div></div>	size	A4	scale	1:1			
eng	Guang, Shi	2011/12/30			ecn no	-					
chr	-	-									
appr	Pei-Ming Zheng	-	product family		PwrBlade	rel level	Released				
<div></div>		title			24S + 6P	dwg no		51940-407	rev	A	
VERTICAL STB RECEIPT											
www.fci.com		cat. no.		Product - Customer Drw				sheet 4 of 4			

Prelim File - REV C - 2009-06-09