



**Part Number :** [39288120](#)

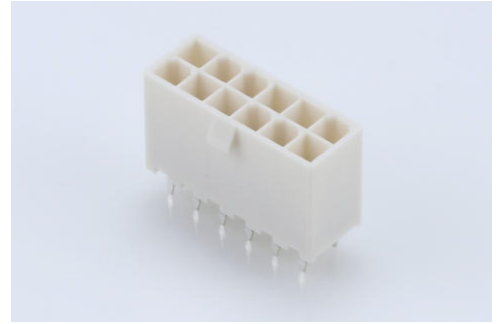
**Product Description :** Mini-Fit Jr. Vertical Header, 4.20mm Pitch, Dual Row, 12 Circuits, without Snap-in Plastic Peg PCB Lock, Tin, Natural

**Series Number :** 5566

**Status :** Active

**Product Category :** PCB Headers and Receptacles

**Engineering Part Number :** 5566-12A-210



---

## Documents and Resources

### Drawings

[039288120 sd.pdf](#)

[PK-5566-000.pdf](#)

### 3D Models and Design Files

[STEP AP242](#)

[SOLIDWORKS](#)

[Creo](#)

[Symbol and Footprint \(Multi-Format\)](#)

### Specifications

[AS-5557-001-001.pdf](#)

[PK-5566-003-001.pdf](#)


[PS-5556-001-001.pdf](#)

[TS-5556-002-001.pdf](#)

---

## Product Environment Compliance

### Compliance

|                    |   |
|--------------------|---|
| GADSL/IMDS         | Compliant with Exemption 44   |
| China RoHS         |  per SJ/T 11365-2006 |
| EU ELV             | Not Relevant  |
| Low-Halogen Status | Low-Halogen per IEC 61249-2-21  |
| REACH SVHC         | Not Contained per D(2025)6375-DC (05 Nov 2025)  |

EU RoHS

Compliant per EU 2015/863

Compliance Statements

- EU RoHS
- REACH SVHC
- Low-Halogen

Industry Documents

- IPC 1752A Class C
- IPC 1752A Class D
- Molex Product Compliance Declaration
- IEC-62474
- chemSHERPA (xml)

Substances of Interest

- PFAS

EU RoHS Certificate of ComplianceAdditional Product Compliance Information**Part Details****General**

|                |   |
|----------------|---|
| Status         | Active  |
| Category       | PCB Headers and Receptacles   |
| Series         | 5566  |
| Description    | Mini-Fit Jr. Vertical Header, 4.20mm Pitch, Dual Row, 12 Circuits, without Snap-in Plastic Peg PCB Lock, Tin, Natural   |
| Application    | Power, Wire-to-Board  |
| Comments       | The 5566 header should be used with standard Mini-Fit female terminals. If increased amperage of up to 13A per circuit is needed, please consider using the Mini-Fit Plus HCS family 45750 terminals with 46015 headers; See Molex Product specification PS-5666-001 for current de-rating information. |
| Component Type | PCB Header  |
| Product Name   | Mini-Fit Jr.  |
| UPC            | 800753617414  |

## Agency

|     |         |
|-----|---------|
| CSA | LR19980 |
| UL  | E29179  |

## Electrical

|                               |      |
|-------------------------------|------|
| Current - Maximum per Contact | 9.0A |
| Voltage - Maximum             | 600V |

## Physical

|                                |          |
|--------------------------------|----------|
| Breakaway                      | No       |
| Circuits (Loaded)              | 12       |
| Circuits (maximum)             | 12       |
| Color - Resin                  | Natural  |
| Durability (mating cycles max) | 30       |
| First Mate / Last Break        | No       |
| Flammability                   | 94V-0    |
| Glow-Wire Capable              | No       |
| Guide to Mating Part           | No       |
| Keying to Mating Part          | None     |
| Lock to Mating Part            | Yes      |
| Material - Metal               | Brass    |
| Material - Plating Mating      | Tin      |
| Material - Plating Termination | Tin      |
| Material - Resin               | Nylon    |
| Net Weight                     | 2.604/g  |
| Number of Rows                 | 2        |
| Orientation                    | Vertical |
| Packaging Type                 | Bag      |
| PCB Locator                    | Yes      |
| PCB Retention                  | None     |
| PCB Thickness - Recommended    | 1.60mm   |
| PC Tail Length                 | 3.50mm   |
| Pitch - Mating Interface       | 4.20mm   |
| Pitch - Termination Interface  | 4.20mm   |
| Plating min - Mating           | 0.889µm  |

|                               |                |
|-------------------------------|----------------|
| Plating min - Termination     | 0.889µm        |
| Polarized to Mating Part      | Yes            |
| Polarized to PCB              | Yes            |
| Shrouded                      | Fully          |
| Stackable                     | No             |
| Temperature Range - Operating | -40° to +105°C |
| Termination Interface Style   | Through Hole   |

### Solder Process Data

|                              |      |
|------------------------------|------|
| Max-Duration                 | 5    |
| Lead-Free Process Capability | WAVE |
| Max-Cycle                    | 1    |
| Max-Temp                     | 240  |

---

### Mates With / Use With

#### Mates with Part(s)

| Description   | Part Number   |
|---|---------------|
| Mini-Fit Jr. Receptacle Housings                              | <u>5557</u>   |
| Mini-Fit TPA2 and Mini-Fit Sigma Dual Row Receptacle Housings | <u>172708</u> |

---

This document was generated on Dec 29, 2025