



Part Number : [314032510](#)

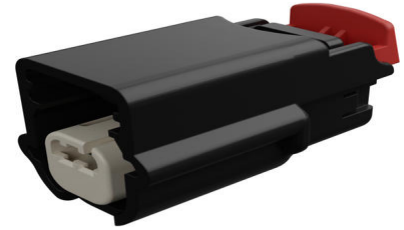
Product Description : 2.54mm MX64 Sealed Single Row Crimp Housing, MX64 Terminal, Black, 2 Circuits, Key B, with CPA Lock

Series Number : 31403

Status : Active

Product Category : Connector Housings

Engineering Part Number : CVP-314032510



Documents and Resources

Drawings

[314032510 sd.pdf](#)

[PK-31300-256-001.pdf](#)

3D Models and Design Files

[STEP AP242](#)

[SOLIDWORKS](#)

[Creo](#)

Specifications

[314020000-000.pdf](#)

[AS-31402-000-001.pdf](#)

[PS-31402-000-001.pdf](#)

[TS-31402-001-1X2-001.pdf](#)

Product Environment Compliance

Compliance

GADSL/IMDS	Compliant
China RoHS	Not Relevant
EU ELV	Compliant per 2000/53/EC
Low-Halogen Status	Low-Halogen per IEC 61249-2-21
REACH SVHC	Contains Dodecamethylcyclohexasiloxane; Decamethylcyclopentasiloxane; Octamethylcyclotetrasiloxane per

	D(2025)4165-DC (25 June 2025)
EU RoHS	Compliant per EU 2015/863

Compliance Statements

- EU RoHS
- REACH SVHC
- Low-Halogen

Industry Documents

- IPC 1752A Class C
- IPC 1752A Class D
- Molex Product Compliance Declaration
- IEC-62474
- chemSHERPA (xml)

Substances of Interest

- PFAS

EU RoHS Certificate of Compliance

Additional Product Compliance Information

Part Details

General

Status	Active
Category	Connector Housings
Series	31403
Description	2.54mm MX64 Sealed Single Row Crimp Housing, MX64 Terminal, Black, 2 Circuits, Key B, with CPA Lock
Application	Power, Wire-to-Board
Product Name	MX64
UPC	884982777989

Physical

Circuits (maximum)	2
Color - Resin	Black
Gender	Receptacle
Glow-Wire Capable	No
Keying to Mating Part	Yes

Lock to Mating Part	Yes
Material - Resin	Polybutylene Terephthalate (PBT)
Net Weight	4.710/g
Number of Rows	1
Packaging Type	Bag
Panel Mount	No
Pitch - Mating Interface	2.54mm
Polarization	B
Polarized to Mating Part	Yes
Temperature Range - Operating	-40° to +125°C

Mates With / Use With

Mates with Part(s)

Description	Part Number
Mates With	Sensors, Other USCAR Interfaces

Use with Part(s)

Description	Part Number
MX64 Female Terminals	<u>33467</u>
MX64 Female Terminals	<u>33468</u>

This document was generated on May 06, 2026