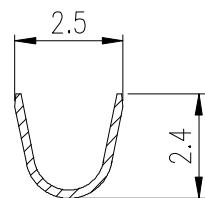
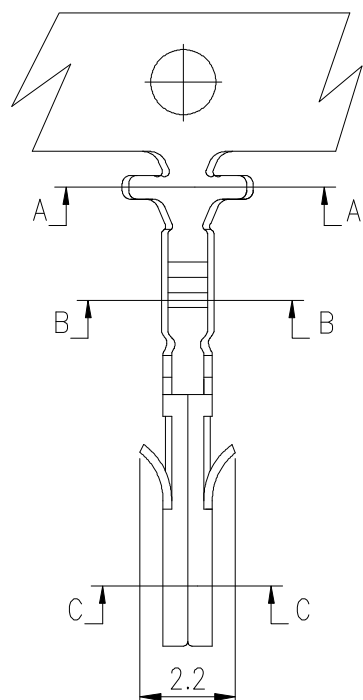


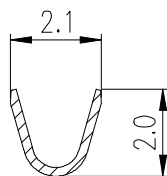


PRODUCT NUMBER

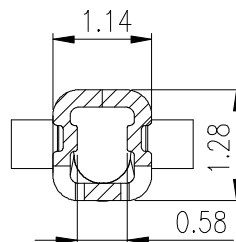
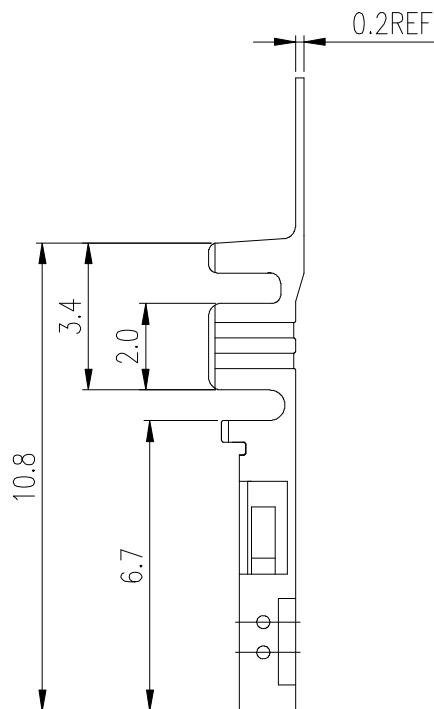
10127718-001LF



SEC A-A



SEC B-B

SEC C-C
SCALE 2:1

NOTES:

1. MATERIAL:
TERMINAL: PHBR
2. FINISH:
MIN. 30u" NICKEL OVERALL UNDERPLATING.
OPTIONAL PLATING ON CONTACT AREA.
3. PLATE TYPE: PRE-TIN PLATED.
4. TERMINAL Q'ty/REEL: 10,000PCS.
5. APPLICABLE WIRES: AWG#30~#20, INSULATOR O.D:
1.27~1.85mm.
6. THIS TERMINAL IS USED WITH FCI RECEPTACLE HSG
10127716.
7. PRODUCT SPECIFICATION: GS-12-1177.
8. PACKAGE SPECIFICATION: GS-14-2359.
9. PRODUCT NUMBER SCHEME:
10127718-00XLF

PLATING CODE

- 1: 80u" TIN OVERALL
- 2: Gold Flash

| mat'l. code | | | | surface | tolerance | projection | product family | | | |
|-------------|----------------|------|------------|---------------------------------------|------------|------------|-------------------------------|--|------------------|------|
| ltr | ecn no | dr | date | tolerances unless otherwise specified | | MM | title | | | |
| A | | TAI | 2013-10-21 | angles | X.X ±0.4 | | RECEPTACLE CRIMP TERMINAL FOR | | | |
| B | ELX-T-17032 | TAI | 2014-02-25 | fil | X.XX ±0.30 | scale | 3mm PITCH WIRE CONNECTOR | | | |
| | | | | X*±2° | | | | | | |
| | | dr | KENNY TAI | 2013-10-21 | | | dwg no | | sheet 1 of 1 | size |
| | | engr | KENNY TAI | 2013-10-21 | | | 10127718 | | | A4 |
| | | chr | KENNY TAI | 2013-10-21 | | | type | | CUSTOMER Drawing | |
| | | appd | PM ZHENG | 2013-11-06 | | | | | | |
| sheet index | revision sheet | B | 1 | | | | | | | |