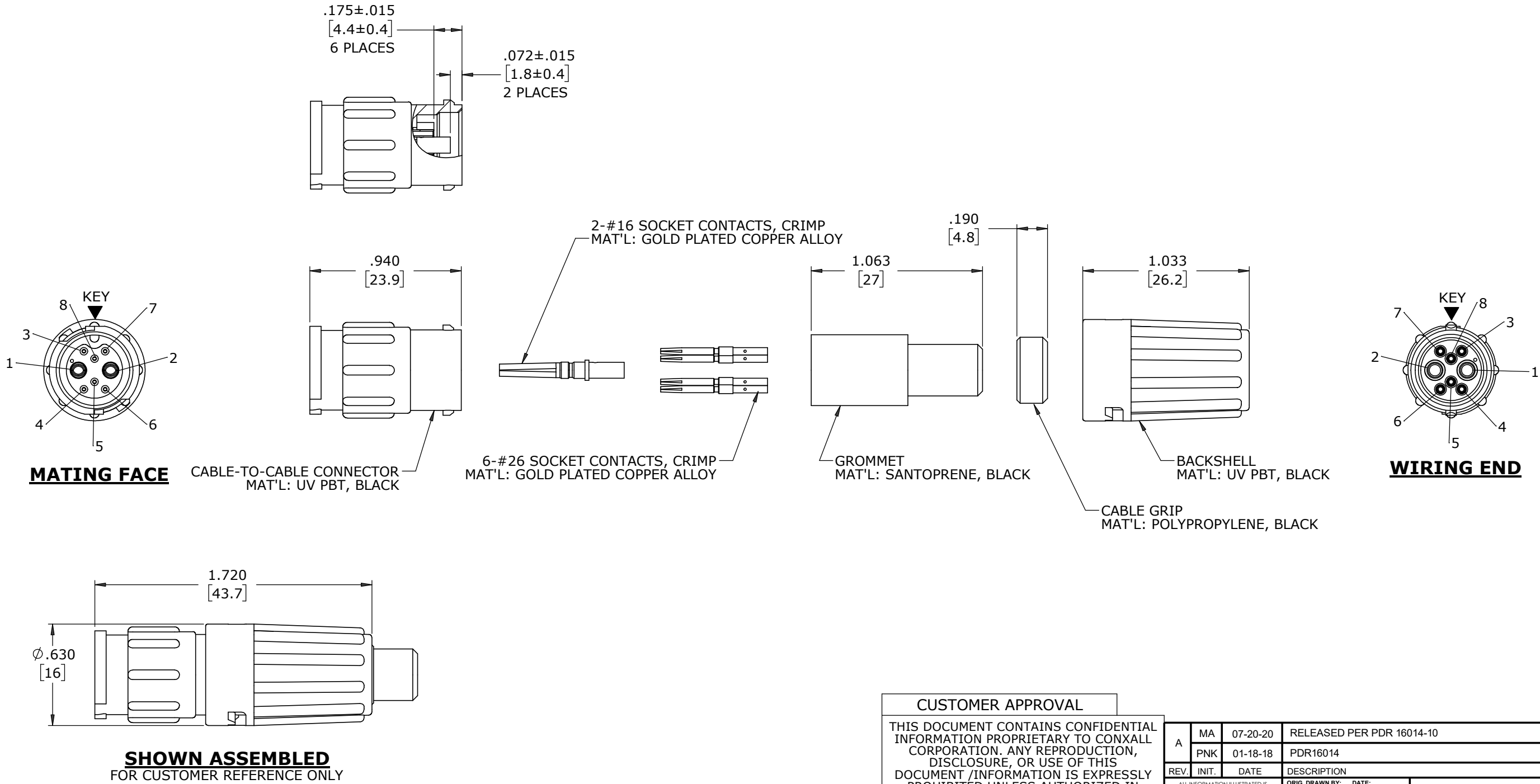


- NOTES:
- 1. ALL PARTS ARE BULK PACKED.
  - 2. CONTACTS SHIPPED UNASSEMBLED
  - 3. ALL DIMENSIONS ARE REFERENCE EXCEPT THOSE WITH A TOLERANCE

ASSEMBLY P/N	CONTACT QTY.		CABLE O.D. RANGE
	#16	#26	
W8A80-8SG-P-513	2	6	.13-.15 [3.3-3.8]
W8A80-8SG-P-516			.16-.18 [4.1-4.6]
W8A80-8SG-P-519			.19-.21 [4.8-5.3]
W8A80-8SG-P-522			.22-.25 [5.6-6.3]
W8A80-8SG-P-526			.25-.27 [6.4-6.9]
W8A80-8SG-P-528			.26-.285 [6.6-7.2]




CUSTOMER APPROVAL

THIS DOCUMENT CONTAINS CONFIDENTIAL INFORMATION PROPRIETARY TO CONXALL CORPORATION. ANY REPRODUCTION, DISCLOSURE, OR USE OF THIS DOCUMENT /INFORMATION IS EXPRESSLY PROHIBITED UNLESS AUTHORIZED IN WRITING BY CONXALL CORPORATION.

APPROVED BY: \_\_\_\_\_

DATE: \_\_\_\_\_

A	MA	07-20-20	RELEASED PER PDR 16014-10			
	PNK	01-18-18	PDR16014			
REV.	INIT.	DATE	DESCRIPTION			
ALL INFORMATION ILLUSTRATED IS THE PROPERTY OF "CONXALL CORPORATION". UNAUTHORIZED DUPLICATION OR DISTRIBUTION OF THIS DOCUMENT IS PROHIBITED.			ORIG. DRAWN BY: PNK		 601 E. WILDWOOD VILLA PARK, IL 60181	
			DATE: 01-18-18			
ALL UNITS ARE IN FEET, INCHES, FRACTION OF INCHES AND DECIMALS.  UNLESS OTHERWISE SPECIFIED TOLERANCES: 3 PLACE DECIMALS ±.010 ANGLES ±1° FRACTIONS ±1/16  ▷ = CRITICAL CHARACTERISTIC FLAG PER SPEC. XXXX			CHECKED BY:		CABLE-TO-CABLE ASSEMBLY 2-16 + 6-26 SOCKET CONTACTS, CRIMP INSTA-CLICK™ MINI-CON-X POWER/SIGNAL	
			APPROVED BY:			
SCALE			SIZE	SHEET		
NTS			B	1 OF 1		
FILE:			DIRECTORY:		PART	REV
W8A80-8SG-P-5XX			SLW		NUMBER: W8A80-8SG-P-5XX	A