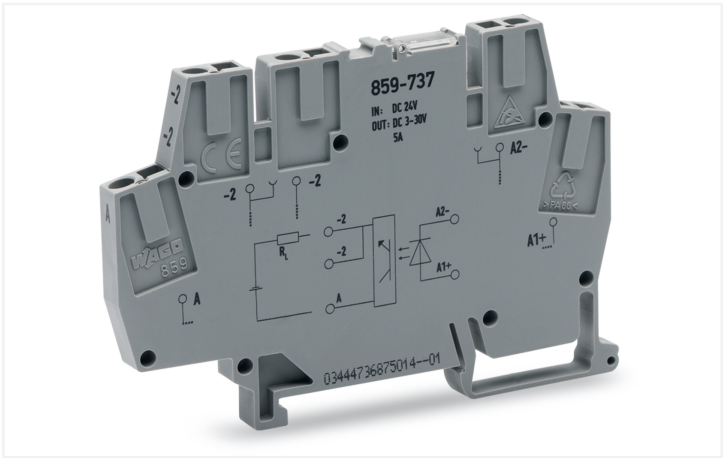


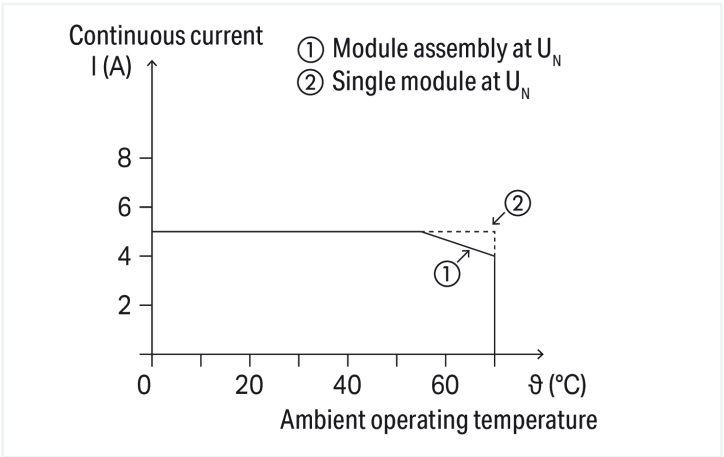
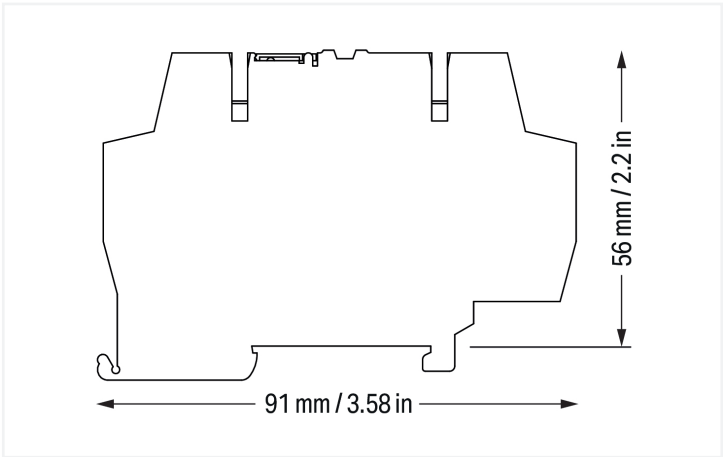
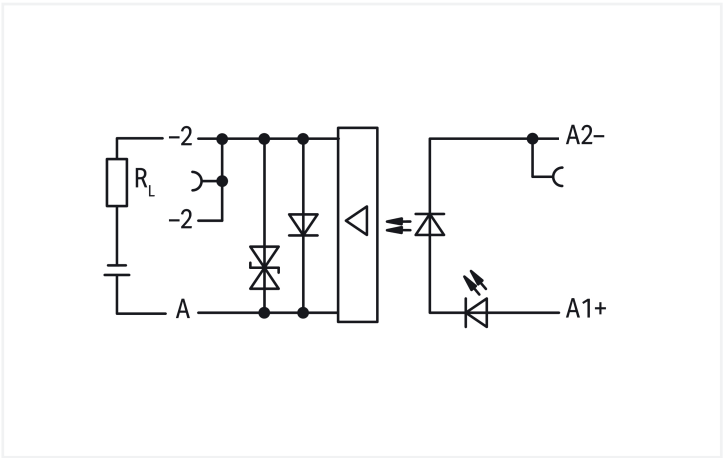
Data Sheet | Item Number: 859-737

Optocoupler module; Nominal input voltage: 24 VDC; Output voltage range: 3 ... 30 VDC; Limiting continuous current: 5 A; 2-wire connection; Frequency: 3 kHz; Red status indicator; Module width: 6 mm; gray

<https://www.wago.com/859-737>



Color: ■ gray



Current-carrying capacity curve

Notes	
Note	Optocouplers and solid state relays are designed for use in signal processing networks that are not supplied directly by the low-voltage power supply network.

Technical data			
Control circuit		Load circuit	
Nominal input voltage $U_N$	24 VDC	Circuit type	2-wire connection
Input voltage range (low level)	0 ... 5 VDC	Limiting continuous current	10 A
Input voltage range (high level)	15 ... 30 VDC	Peak output current	25 A
Nominal input current at $U_N$	4 mA	Nominal output voltage	24 VDC
Input current range	2 ... 7 mA	Output voltage range	3 ... 30 VDC
		Voltage drop	$\leq 0.2$ VDC
		Leakage current at rated voltage	$\leq 5$ $\mu$ A
		Turn-on time	$\leq 40$ $\mu$ s
		Turn-off time	$\leq 70$ $\mu$ s
		Rise time ( $t_{10-90}$ )	18 $\mu$ s
		Drop-out time ( $t_{90-10}$ )	13 $\mu$ s
		Switching frequency	$\leq 3$ kHz



Signaling	
Status indicator	Red LED

Safety and protection	
Rated Voltage	300 V
Overvoltage category	II
Pollution degree	2
Dielectric strength (control/load circuit) (AC, 1 min)	2.5 kVrms
Insulation type (control/load circuit)	Basic insulation
Insulation type (between adjacent devices of the same type)	Reinforced insulation (safe isolation)
Insulation type (to adjacent devices of different types)	Basic insulation
Protection type	IP20; in connected state or when using 859-525 end plate

Connection data	
Connection technology	CAGE CLAMP®
Solid conductor	0.2 ... 2.5 mm² / 24 ... 14 AWG
Fine-stranded conductor	0.2 ... 2.5 mm² / 24 ... 14 AWG
Fine-stranded conductor; with insulated ferrule	0.2 ... 1.5 mm² / 24 ... 16 AWG
Strip length	5 ... 6 mm / 0.2 ... 0.24 inches

Physical data	
Width	6 mm / 0.236 inches
Height	91 mm / 3.583 inches
Depth from upper-edge of DIN-rail	56 mm / 2.205 inches

Mechanical data	
Mounting type	DIN-35 rail
Mounting position	horizontal (standing/lying); vertical

Material data	
Note (material data)	<a href="#">Information on material specifications can be found here</a>
Color	gray
Insulation material (main housing)	Polyamide (PA66)
Material group	I
Flammability class per UL94	V0
Fire load	0.338 MJ
Weight	19.7 g

Environmental requirements	
Ambient temperature (operation at U <sub>N</sub> )	-40 ... +70 °C
Ambient temperature UL (operation at U <sub>N</sub> )	-40 ... +40 °C
Ambient temperature (storage)	-40 ... +85 °C
Processing temperature	-25 ... +50 °C
Temperature range of connection cable	≥ (T <sub>ambient</sub> + 20 K)
Relative humidity	5 ... 95 % (no condensation permissible)
Operating altitude (max.)	2000 m



Standards and specifications	
Standards/specifications	EN 61010-2-201 EN 61000-6-2 EN 61000-6-3 UL 508

Commercial data	
Product Group	6 (INTERFACE ELECTRONIC)
PU (SPU)	1 pcs
Packaging type	Box
Country of origin	DE
GTIN	4055143605328
Customs tariff number	85365005000

Product classification	
UNSPSC	39121521
eCl@ss 10.0	27-26-15-03
eCl@ss 9.0	27-26-15-03
ETIM 9.0	EC001504
ETIM 8.0	EC001504
ECCN	NO US CLASSIFICATION

Environmental Product Compliance	
CAS-No.	1303-86-2 7439-92-1 79-94-7
REACH Candidate List Substance	2,2',6,6'-tetrabromo-4,4'-isopropylidenediphenol Diboron trioxide Lead
RoHS Compliance Status	Compliant,With Exemption
RoHS Exemption	7(a) 7(c)-I
SCIP notification number (Austria)	9a7fc626-9466-4097-bccc-d0061e85242c
SCIP notification number (Belgium)	8d3b39a2-e984-4c6e-911c-4f4b5bc6c914
SCIP notification number (Bulgaria)	f98a02fc-be56-4703-b975-0734b9917cc7
SCIP notification number (Czech Republic)	c813336d-3fe5-4e2f-8040-5b35c862642b
SCIP notification number (Denmark)	cfbab42c-baa0-42e4-9c12-52cabe7d8715
SCIP notification number (Finland)	9534f08c-a758-406f-94b0-34d9b78b36bc
SCIP notification number (France)	438dbd41-68dd-48bc-b5a3-096fcaa6eed8
SCIP notification number (Germany)	f2cb3156-167b-4c4d-adc9-cc8fe631edfa
SCIP notification number (Hungary)	3cb68cfc-8159-427e-bdc5-bbb243576637
SCIP notification number (Italy)	5d8dc082-ff4e-4179-8406-92bdee159053
SCIP notification number (Netherlands)	d7f90666-ae3a-4c0e-8f17-9e57bc890693
SCIP notification number (Poland)	92e9e438-d002-4f60-aa50-dd05f0f5d528
SCIP notification number (Romania)	17ff95e8-9d34-4a4e-9321-18f0c6483e04
SCIP notification number (Sweden)	7cda85a0-194b-4391-a77a-b7a4f73ac9b9



Approvals / Certificates

General approvals



Approval	Standard	Certificate Name
EAC GZO Almaty Standart	TP TC 020/2011	EAC CoC 03081

Declarations of conformity and manufacturer's declarations

Approval	Standard	Certificate Name
EU-Declaration of Confor- mity WAGO GmbH & Co. KG	-	-

Downloads

Environmental Product Compliance

Compliance Search
Environmental Product Compliance 859-737



Documentation

Bid Text
859-737
19.02.2019
xml 3.79 KB
↓
859-737
20.02.2019
docx 15.34 KB
↓

Instruction Leaflet
Relay modules, Opto- coupler modules
V 2.0.0 19.01.2022
pdf 2066.27 KB
↓

CAD/CAE-Data

CAD data
2D/3D Models 859-737



CAE data
EPLAN Data Portal 859-737
↓
WSCAD Universe 859-737
↓
ZUKEN Portal 859-737
↓

1 Compatible Products

1.1 Optional Accessories

1.1.1 End plate

1.1.1.1 End plate



Item No.: 859-525  
End and intermediate plate; 1 mm thick;  
gray



1.1.1.2 Intermediate plate



**Item No.: 859-525**  
End and intermediate plate; 1 mm thick; gray

1.1.2 Ferrule

1.1.2.1 Ferrule



**Item No.: 216-321**  
Ferrule; Sleeve for 0.25 mm² / AWG 24; insulated; electro-tin plated; yellow



**Item No.: 216-322**  
Ferrule; Sleeve for 0.34 mm² / 22 AWG; insulated; electro-tin plated; light turquoise



**Item No.: 216-221**  
Ferrule; Sleeve for 0.5 mm² / 20 AWG; insulated; electro-tin plated; white



**Item No.: 216-222**  
Ferrule; Sleeve for 0.75 mm² / 18 AWG; insulated; electro-tin plated; gray



**Item No.: 216-223**  
Ferrule; Sleeve for 1 mm² / AWG 18; insulated; electro-tin plated; red



**Item No.: 216-224**  
Ferrule; Sleeve for 1.5 mm² / AWG 16; insulated; electro-tin plated; black

1.1.3 Jumper

1.1.3.1 Jumper



**Item No.: 859-410/000-006**  
Jumper; for jumper slot; 10-way; insulated; blue



**Item No.: 859-410**  
Jumper; for jumper slot; 10-way; insulated; light gray



**Item No.: 859-410/000-005**  
Jumper; for jumper slot; 10-way; insulated; red



**Item No.: 859-410/000-029**  
Jumper; for jumper slot; 10-way; insulated; yellow



**Item No.: 859-402/000-006**  
Jumper; for jumper slot; 2-way; insulated; blue



**Item No.: 859-402**  
Jumper; for jumper slot; 2-way; insulated; light gray



**Item No.: 859-402/000-005**  
Jumper; for jumper slot; 2-way; insulated; red



**Item No.: 859-402/000-029**  
Jumper; for jumper slot; 2-way; insulated; yellow



**Item No.: 859-403/000-006**  
Jumper; for jumper slot; 3-way; insulated; blue



**Item No.: 859-403**  
Jumper; for jumper slot; 3-way; insulated; light gray



**Item No.: 859-403/000-005**  
Jumper; for jumper slot; 3-way; insulated; red



**Item No.: 859-403/000-029**  
Jumper; for jumper slot; 3-way; insulated; yellow



**Item No.: 859-404/000-006**  
Jumper; for jumper slot; 4-way; insulated; blue



**Item No.: 859-404**  
Jumper; for jumper slot; 4-way; insulated; light gray



**Item No.: 859-404/000-005**  
Jumper; for jumper slot; 4-way; insulated; red



**Item No.: 859-404/000-029**  
Jumper; for jumper slot; 4-way; insulated; yellow



**Item No.: 859-405/000-006**  
Jumper; for jumper slot; 5-way; insulated; blue



**Item No.: 859-405**  
Jumper; for jumper slot; 5-way; insulated; light gray



**Item No.: 859-405/000-005**  
Jumper; for jumper slot; 5-way; insulated; red



**Item No.: 859-405/000-029**  
Jumper; for jumper slot; 5-way; insulated; yellow



**Item No.: 859-406/000-006**  
Jumper; for jumper slot; 6-way; insulated; blue



**Item No.: 859-406**  
Jumper; for jumper slot; 6-way; insulated; light gray



**Item No.: 859-406/000-005**  
Jumper; for jumper slot; 6-way; insulated; red



**Item No.: 859-406/000-029**  
Jumper; for jumper slot; 6-way; insulated; yellow



**Item No.: 859-407/000-006**  
Jumper; for jumper slot; 7-way; insulated; blue



**Item No.: 859-407**  
Jumper; for jumper slot; 7-way; insulated; light gray



**Item No.: 859-407/000-005**  
Jumper; for jumper slot; 7-way; insulated; red



**Item No.: 859-407/000-029**  
Jumper; for jumper slot; 7-way; insulated; yellow



1.1.3.1 Jumper



**Item No.: 859-408/000-006**  
Jumper; for jumper slot; 8-way; insulated; blue

**Item No.: 859-408**  
Jumper; for jumper slot; 8-way; insulated; light gray

**Item No.: 859-408/000-005**  
Jumper; for jumper slot; 8-way; insulated; red

**Item No.: 859-408/000-029**  
Jumper; for jumper slot; 8-way; insulated; yellow



**Item No.: 859-409/000-006**  
Jumper; for jumper slot; 9-way; insulated; blue

**Item No.: 859-409**  
Jumper; for jumper slot; 9-way; insulated; light gray

**Item No.: 859-409/000-005**  
Jumper; for jumper slot; 9-way; insulated; red

**Item No.: 859-409/000-029**  
Jumper; for jumper slot; 9-way; insulated; yellow

1.1.4 Marking

1.1.4.1 Marker



**Item No.: 2009-145**  
Mini-WSB Inline; for Smart Printer; 1700 pieces on roll; stretchable 5 - 5.2 mm; plain; snap-on type; white

**Item No.: 248-502**  
Mini-WSB marking card; as card; MARKED; 1 ... 10 (10x); not stretchable; Horizontal marking; snap-on type; white

**Item No.: 248-503**  
Mini-WSB marking card; as card; MARKED; 11 ... 20 (10x); not stretchable; Horizontal marking; snap-on type; white

**Item No.: 248-504**  
Mini-WSB marking card; as card; MARKED; 21 ... 30 (10x); not stretchable; Horizontal marking; snap-on type; white



**Item No.: 248-506**  
Mini-WSB marking card; as card; MARKED; 41 ... 50 (10x); not stretchable; Horizontal marking; snap-on type; white

**Item No.: 248-501**  
Mini-WSB marking card; as card; not stretchable; plain; snap-on type; white

1.1.4.2 Marking device



**Item No.: 210-110**  
Fiber-tip pen

1.1.5 Test and measurement

1.1.5.1 Testing accessories



**Item No.: 859-500**  
WAGO Test pin; 1 mm Ø; 30 V AC / 60 V DC; CAT0; 1 A; 10 mm uninsulated; Test lead for soldering up to 0,5mm<sup>2</sup>

1.1.6 Tool

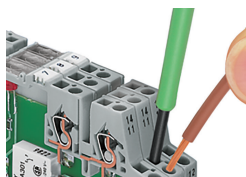
1.1.6.1 Operating tool



**Item No.: 210-720**  
Operating tool; Blade: 3.5 x 0.5 mm; with a partially insulated shaft; multicoloured

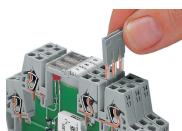
## Installation Notes

### Conductor termination



Conductor termination

### Commoning



Easy commoning using adjacent jumpers

### Marking



Marking via Mini-WSB Quick Marking System