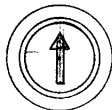
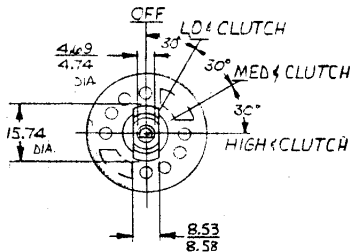
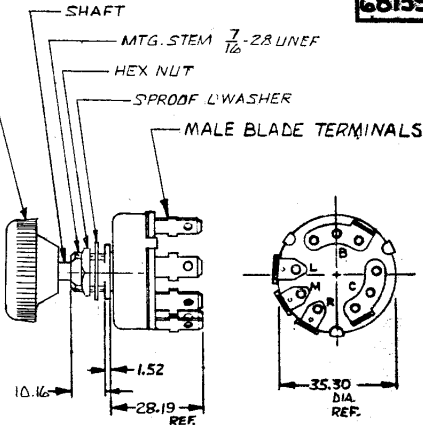


LEGEND	
B	BATTERY
L	LOW
M	MEDIUM
R	HIGH
C	CLUTCH



METRIC

FRONT VIEW  
OF KNOB



NOTES:

1. IMPORTANT - NO BREAK IN CLUTCH CIRCUIT  
BETWEEN LOW, MEDIUM, HIGH POSITION
2. SILVERED CONTACT SURFACES
3. MELAMINE LINER
4. ALL STEEL PARTS PLATED
- ⑤ 5. ELECTRICAL RATING : 12/24VDC

**DO NOT SCALE**

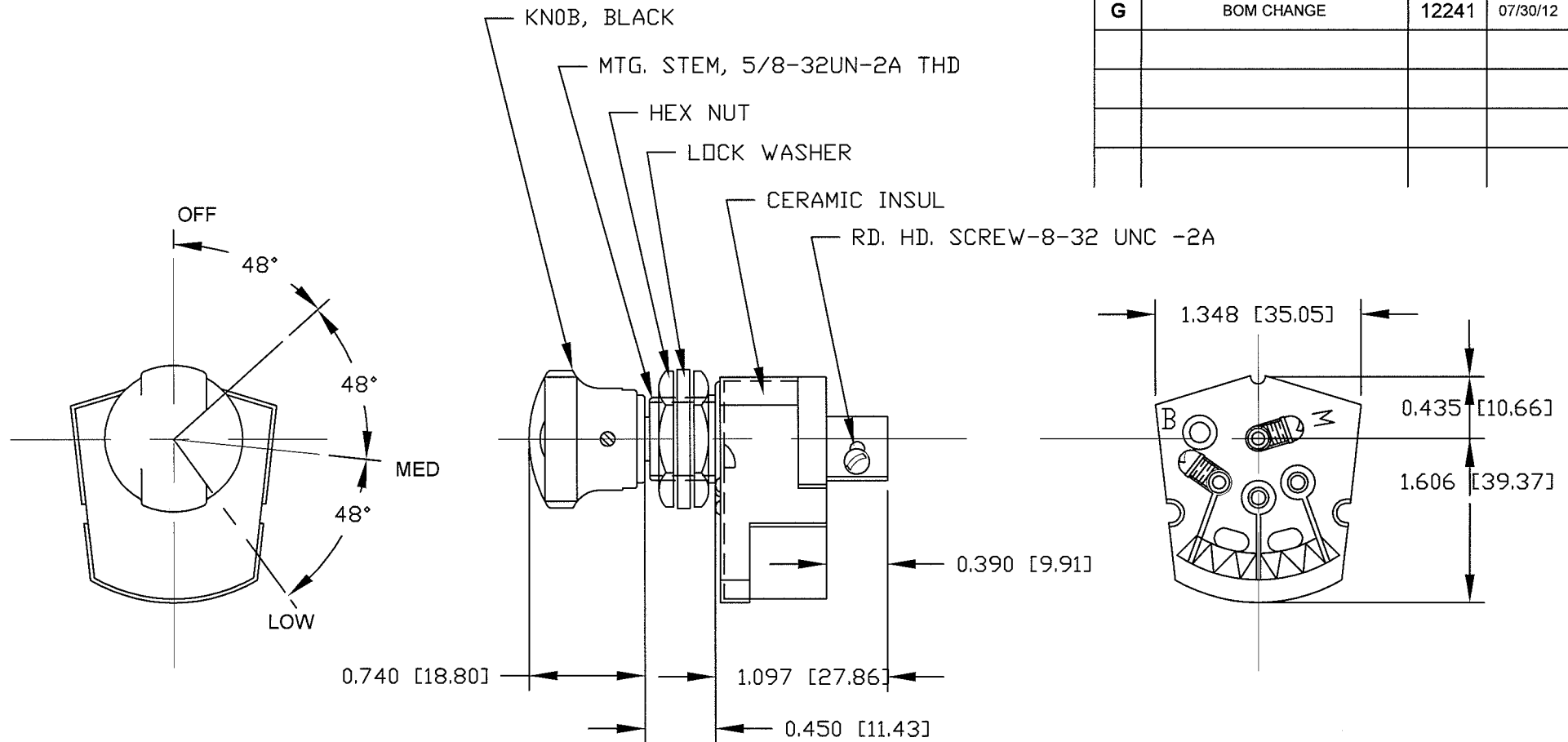
[illegible]

### AIR CONDITIONING SWITCH WITH CLUTCH CIRCUIT

**68159-05**

# Revision Control Record

Rev.	Description of Change	ECN No.	Date
G	BOM CHANGE	12241	07/30/12



NOTE: ALL STEEL PARTS PLATED

12 VOLT - 3 OHMS

DO NOT SCALE

Note: unless noted otherwise all dimension are AFTER plating  
Tolerances: Unless otherwise specifically noted, the following  
are default tolerances;

**2-places**  $\pm 0.02$  [0.5] **3-places**  $\pm 0.005$  [0.13] **Angular**  $\pm 1^\circ$

Unless otherwise specified dimensions are in inches.  
Dimensions in brackets [ ] are in millimeters.

"REF" = Non-Toleranced Reference Dimension, shown for  
clarification purposes only.

Note: All tolerances are Non-Cumulative.

## PROPRIETARY INFORMATION

All information contained  
herein, is proprietary to the  
Cole Hersee Company.  
Unauthorized use or  
reproduction is prohibited.

3RD ANGLE  
PROJECTION

## Special Characteristics:

- ☒ **CC** Critical Characteristic, relating to  
Safety and/or Regulatory Compliance
- ☒ **X** Significant Characteristic relating to  
Process Control
- ☒ **KC** Control Dimension relating to Form -  
Fit - Function as defined by Cole  
Hersee Company and/or the Customer



**Littelfuse®**

Phn: 617-268-2100 Web: www.colehersee.com

Description:

**HEATER SWITCH**

Drawing /  
Part No.:

**68362**

Current Rev.

**G**

FORM CHT-6 (1/12)

Used On  
or Ref.: XXXXXXXX

Scale: 1:1

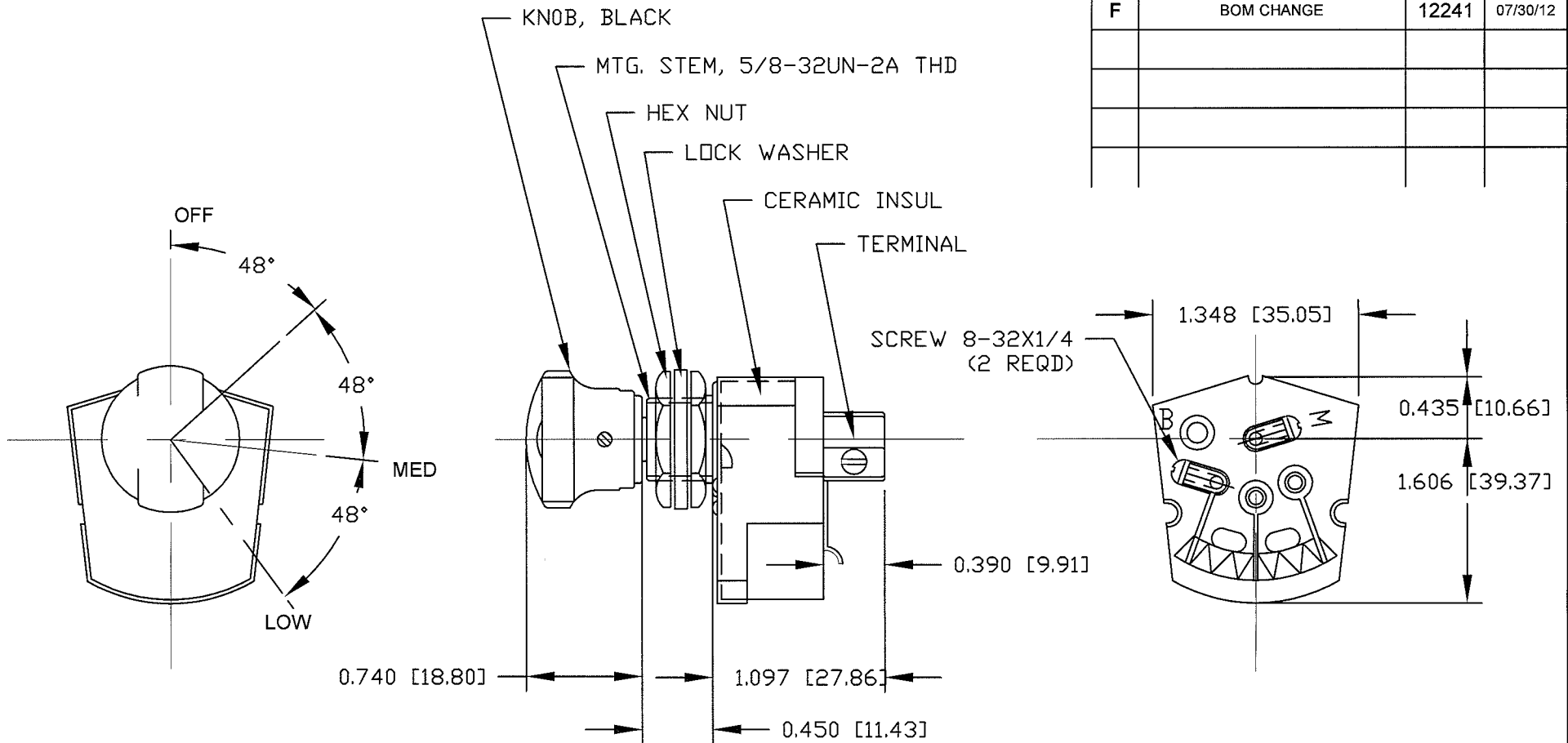
Drawn  
BY: E.A

Date  
Drawn: 06/08/67

Pg. 1 of 1

# Revision Control Record

Rev.	Description of Change	ECN No.	Date
F	BOM CHANGE	12241	07/30/12



6 OHMS

DO NOT SCALE

Note: unless noted otherwise all dimension are AFTER plating  
Tolerances: Unless otherwise specifically noted, the following are default tolerances;

2-places ± 0.02 [0.5]      3-places ± 0.005 [0.13]      Angular ± 1°

Unless otherwise specified dimensions are in inches.  
Dimensions in brackets [ ] are in millimeters.

"REF" = Non-Toleranced Reference Dimension, shown for clarification purposes only.

Note: All tolerances are Non-Cumulative.

## PROPRIETARY INFORMATION

All information contained herein, is proprietary to the Cole Hersee Company. Unauthorized use or reproduction is prohibited.

3RD ANGLE PROJECTION

## Special Characteristics:

☒ CC Critical Characteristic, relating to Safety and/or Regulatory Compliance

☒ X Significant Characteristic relating to Process Control

☒ KC Control Dimension relating to Form - Fit - Function as defined by Cole Hersee Company and/or the Customer



Littelfuse®

Phn: 617-268-2100 Web: www.colehersee.com

## Description:

HEATER SWITCH

Drawing / Part No.:

68363

Current Rev.

F

FORM CHT-6 (1/12)

Used On or Ref.: XXXXXXXX

Scale: 1:1

Drawn BY: E.A

Date Drawn: 06/08/67

Pg. 1 of 1

# Revision Control Record

Rev.	Description of Change	ECN No.	Date
A	BOM CHANGE	12241	07/30/12

24 VOLT, 6 OHM HEATER SWITCH  
BASIC 68363 WITH 6855-1.  
FACE PLATE-TAN (MODERNE)  
8155 KNOB ASSEMBLY-TAN

Note: unless noted otherwise all dimension are AFTER plating  
Tolerances: Unless otherwise specifically noted, the following  
are default tolerances;

**2-places**      **3-places**      **Angular**  
**± 0.02 [0.5]**      **± 0.005 [0.13]**      **± 1°**

Unless otherwise specified dimensions are in inches.  
Dimensions in brackets [ ] are in millimeters.

"REF" = Non-Toleranced Reference Dimension, shown for  
clarification purposes only.

Note: All tolerances are Non-Cumulative.

## PROPRIETARY INFORMATION

All information contained  
herein, is proprietary to the  
Cole Hersee Company.  
Unauthorized use or  
reproduction is prohibited.

3RD ANGLE  
PROJECTION

## Special Characteristics:

☒ **CC** Critical Characteristic, relating to  
Safety and/or Regulatory Compliance

☒ **X** Significant Characteristic relating to  
Process Control

☒ **KC** Control Dimension relating to Form -  
Fit - Function as defined by Cole  
Hersee Company and/or the Customer



**Littelfuse®**

Phn: 617-268-2100 Web: www.colehersee.com

## Description:

**HEATER SWITCH**

Drawing /  
Part No.:

**68366**

Current Rev.

**A**

FORM CHT-6 (1/12)

Used On  
or Ref.: **XXXXXXXX**

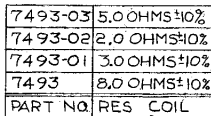
**Scale: 1:1**

Drawn  
BY: **N. B**

Date  
Drawn: 09/08/67

**Pg. 1 of 1**

7493



METRIC

DATE DRAWN  
12-3-57

DATE BLUEPRINT

7493

RHEOSTAT SWITCH

COLE-HERSEE CO.

NPM 9-12-72

1493-07

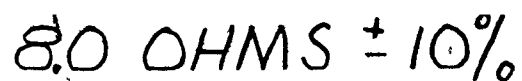
BASIC 7493  
EXCEPT  
WITH 8166-07 BLACK KNOB  
IMPRINTED "PANEL LAMPS

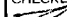

DO NOT SCALE

LET	WAS	DATE	BY	LET	WAS	DATE	BY	MATERIAL	DRAWN	CHECKED	APPRV'D	SCALE	DATE DRAWN
								NOTED	B	APR		#	9-5-72
								FINISH	COLE-HERSEE COMPANY				DATE BLUEPRINT
								NOTED	BOSTON, MASS. 02127, U.S.A.				
								TOLERANCES	RHEOSTAT SWITCH				7493-07
								FRACTIONAL ±					
								DECIMAL ±					

SPAULDING CO., INC

MM	IN
25	010
52	060
48	334
55	337
93	470
96	510
35	880
52	1320
00	2520



LET	WAS	DATE	BY	LET	WAS	DATE	BY	MATERIAL	DRAWN	CHECKED	APPRV D	SCALE	DATE DRAWN
								NOTED	R6	 3-7-80		11	3-2-59
								FINISH NOTED	 Cole Hersee Co				DATE BLUEPRINT
								TOLERANCES					
								DECIMAL $\pm .010$					
								METRIC $\pm .25$					
				F	REDRAWN	3-6-80	(R7)	RHEOSTAT SWITCH				7496	

**Confidential Property of Cole Hersee**

COLE-HERSEE CO

NPM 9 2 72

7493-04

BASIC - 7496  
 EXCEPT  
 WITH 8166 07 BLACK KNOB  
 IMPRINTED PANEL LAMPS  
 SHIPPED LOOSE

DO NOT SCALE

LET	WAS	DATE	BY	LET	WAS	DATE	BY	MATERIAL	W					DATE DRAWN
									B	CP				9 5-72
								FINISH	COLE HERSEE COMPANY					DATE BLUEPRINT
								TOLERANCES	BOSTON MASS 02127 U S A					
								FRACTIONAL ±	RHEOSTAT SWITCH					749601
								DECIMAL ±						

SP UL I G C I




NPM 8-1-79

ALL STEEL PARTS EITHER ZINC PLATE WITH  
DICHROMATE DIP OR CADMIUM PLATE

# METRIC

18 OHMS

DO NOT SCALE

LET	WAS	DATE	BY	LET	WAS	DATE	BY	MATERIAL	DRAWN	CHECKED	APPRV D	SCALE	BASIC W/ 18 OHMS COIL & 81298-37 KNOB	DATE DRAWN
								— # —	JAV	8279		FULL		7-26-79
								FINISH — # —	 <b>Cole Hersee Co</b> <small>OL SO OH</small>					DATE BLUEPRINT
								TOLERANCES DECIMAL ± METRIC ±0.25	<b>RHEOSTAT SWITCH</b>					<b>7496-II</b>
					ISSUED	8-2-79								

CH 188(4 78)