

FCI PN: SEE NOTE 3	CUSTOMER VERSION
10143222-001LF	A00

A

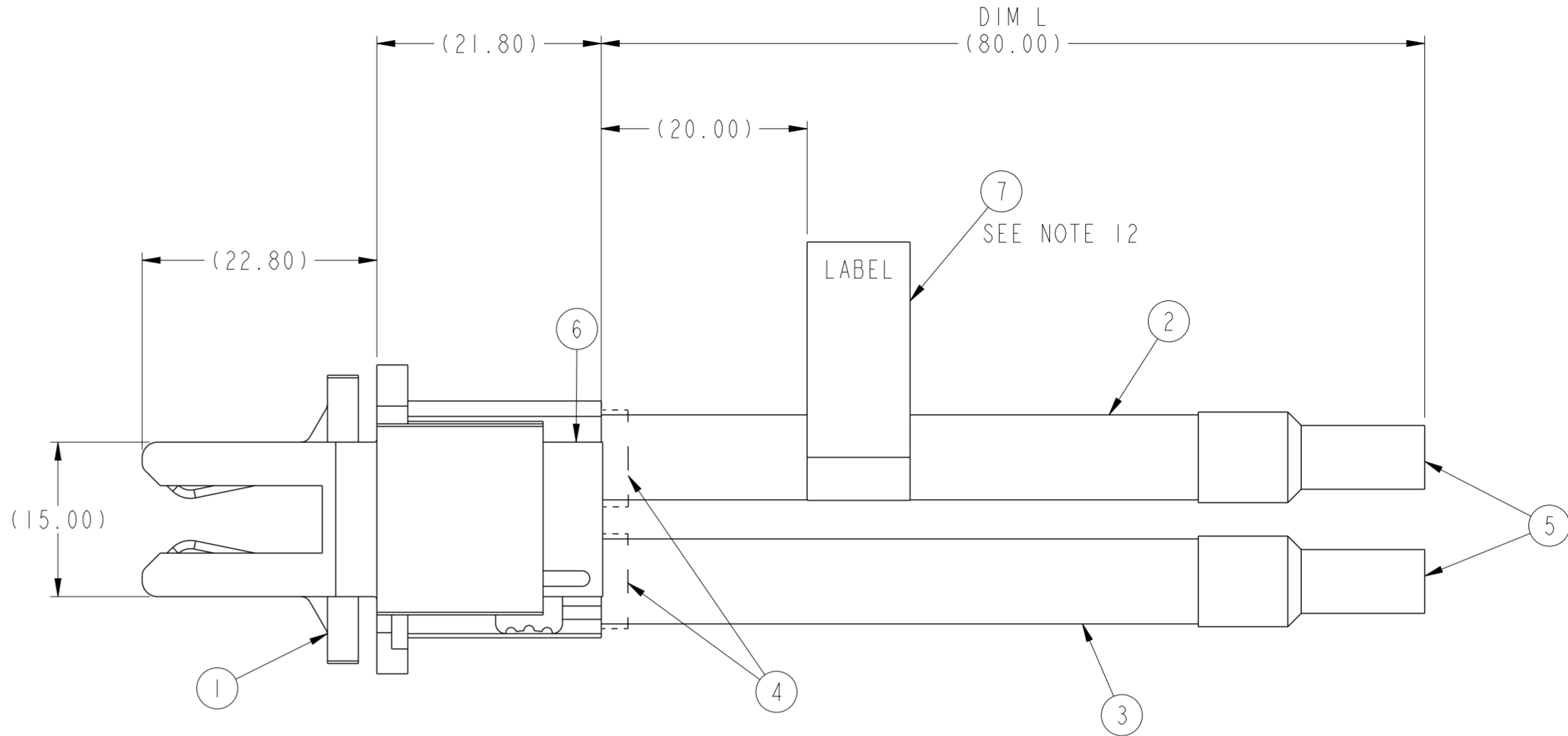
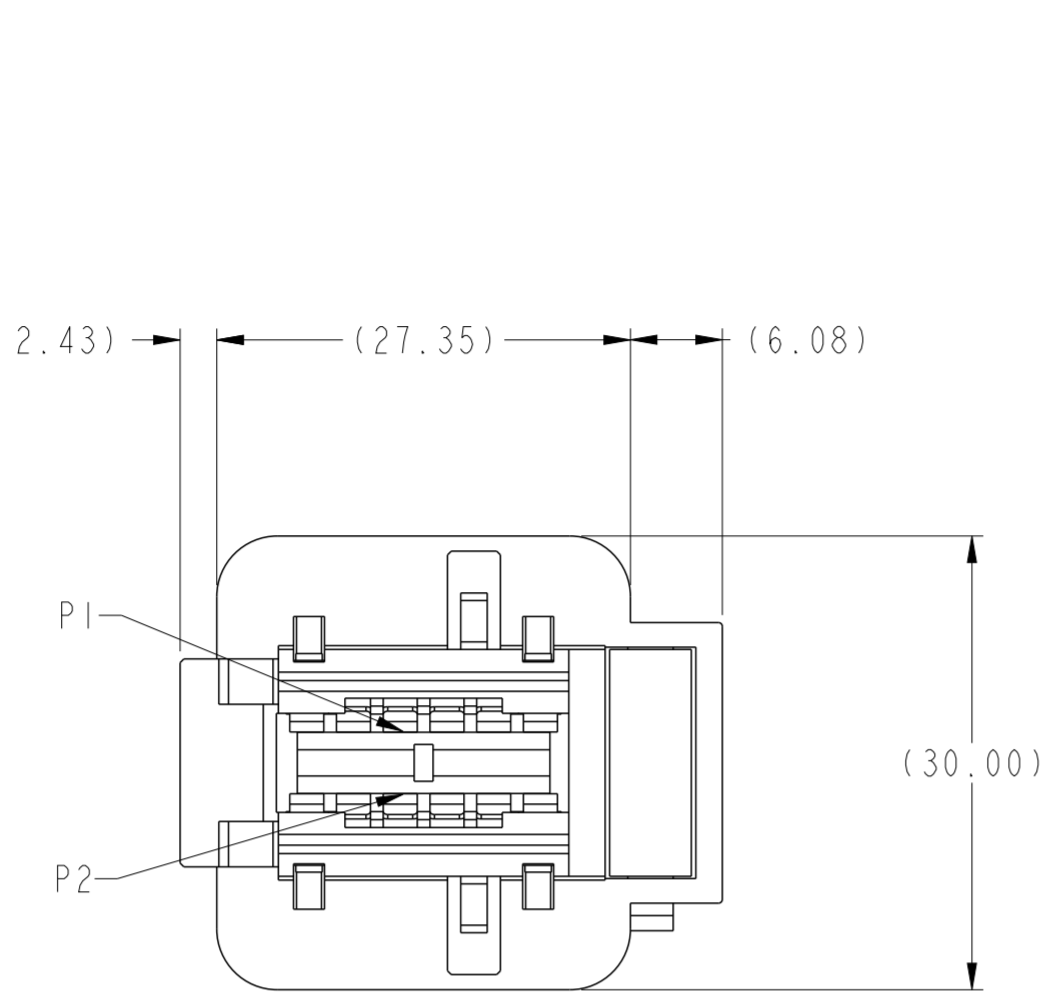
B

C

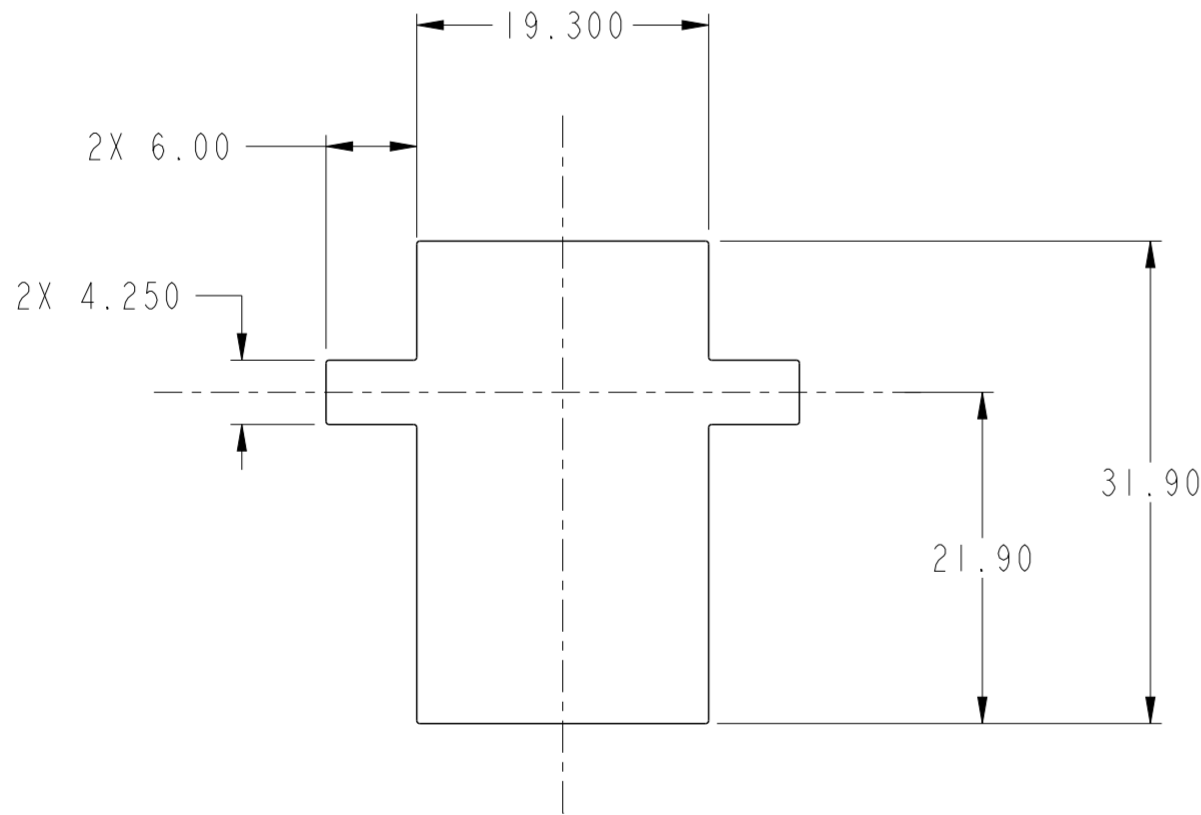
D

E

F



A SIDE
BARKLIP CONNECTOR
SCALE 2:1



PANEL CUTOUT DETAILS
PANEL THICKNESS=1.2±0.05mm
SCALE 2:1

7	ID LABEL	1	EA
6	STL LOCKING BLOCK	1	EA
5	CORE END TERMINAL, KST: E16-12, IVORY	2	EA
4	H.S.TUBE	2	M
3	UL10198 6AWG RED HI-FLEX	1	M
2	UL10198 6AWG BLACK HI-FLEX	1	M
1	BARKLIP CONNECTOR KIT	1	EA
NO.	DESCRIPTION	QTY	UNIT

spec ref	-	dr	Chris Gieski	2017/03/18	projection	mm	size	A2	scale	2:1
tolerance std	-	eng	Chris Gieski	2017/10/21			ecn no	-	rel level	Released
ASME Y14.5	TOLERANCES UNLESS OTHERWISE SPECIFIED	chr	-	-						
surface	linear	appr	Steve Pressel	2017/10/21						
ASME Y14.5	angular	Amphenol FCI			product family	BK 10	cat. no.	SEE TABLE	Product - Customer Drw	sheet 1 of 2
		title	STL CABLE ASSEMBLY				dwg no	10143222		
		rev	BK 10				rev	A		

	1	2	3	4	5	6	7	8
A	<div>NOTES:</div> <div>1. END "A" MATES WITH 6.00mm THICKNESS COPPER BUSBAR.</div> <div>2. UNLESS OTHERWISE SPECIFIED ASSEMBLED LENGTH TOLERANCE = <div><1 METER: ±15.00mm</div> <div>1 METER TO 10 METERS: ±2% OF "DIM L"</div> <div>> 10 METERS: +0% -4.0% OF "DIM L"</div> </div> <div>3. CONNECTOR PART NUMBER WILL BE DETERMINED BASED ON END TERMINATION.</div> <div>4. UNLESS OTHERWISE SPECIFIED ALL CABLE ASSEMBLIES SHALL BE 100% HI-POT TESTED. ALL CABLE ASSEMBLIES SHALL BE TESTED 100% FOR CONTINUITY AS DEFINED IN WIRING LIST.</div> <div>5. ALL CUSTOMER DRAWINGS ARE SUPPLIED WITH METRIC DIMENSIONS</div> <div>6. LEAD FREE PRODUCTS MEET EUROPEAN UNION DIRECTIVES AND OTHER COUNTRY REGULATIONS AS DESCRIBED IN GS-47-0004.</div> <div>7. PACKAGING OF LEAD FREE PRODUCTS MEETS LABELING AND PACKAGING SPECIFICATION GS-14-920.</div> <div>8. CONNECTOR ASSEMBLIES SHOWN ARE FOR REFERENCE ONLY AND MAY NOT SHOW ALL PART DETAIL. REFERENCE CONNECTOR HOUSING DRAWING FOR COMPLETE DETAILS.</div> <div>9. GLOBAL STANDARDS FOR CABLE PACKAGING: GS-14-1093.</div> <div>10. THIS DIMENSION IS A FINISHED PRODUCT LENGTH.</div> <div>11. CABLE: UL APPROVED HOUSING: HIGH TEMP. THERMOPLASTIC COLOR: BLACK POWER CONTACTS: COPPER ALLOY</div> <div>12. LABEL DETAIL: TBD</div> <div>13. 2PCS TAPPING SCREW AND 2PCS WASHER INCLUDED WITH EACH CONNECTOR ASSEMBLY.</div> <div>14. ALL COMPONENTS MUST BE HALOGEN FREE.</div>							
B								
C								
D								
E								
F	<div> <div> <div> <div> <div>spec ref</div> <div>-</div> </div> <div> <div>tolerance std</div> <div>-</div> </div> <div> <div>ASME Y14.5</div> <div>✓</div> </div> </div> <div> <div>TOLERANCES UNLESS OTHERWISE SPECIFIED</div> <div> <div>linear</div> <div> <div>0.X</div> <div>±0.3</div> </div> <div> <div>0.XX</div> <div>±0.10</div> </div> <div> <div>0.XXX</div> <div>±0.05</div> </div> </div> <div> <div>angular</div> <div> <div>0°</div> <div>±2°</div> </div> </div> </div> <div> <div>surface</div> <div>ASME Y14.5</div> </div> </div> <div> <div>dr</div> <div>Chris Gieski</div> <div>2017/03/18</div> </div> <div> <div>eng</div> <div>Chris Gieski</div> <div>2017/10/21</div> </div> <div> <div>chr</div> <div>-</div> <div>-</div> </div> <div> <div>appr</div> <div>Steve Pressel</div> <div>2017/10/21</div> </div> <div> <div>projection</div> <div> </div> </div> <div> <div>mm</div> <div>←→</div> </div> <div> <div>size</div> <div>A2</div> </div> <div> <div>scale</div> <div>2:1</div> </div> <div> <div>ecn no</div> <div>-</div> </div> <div> <div>product family</div> <div>BK 10</div> </div> <div> <div>rel level</div> <div>Released</div> </div> <div> <div>Amphenol FCI</div> <div>title</div> <div>STL CABLE ASSEMBLY</div> <div>BK 10</div> </div> <div> <div>cat. no.</div> <div>SEE TABLE</div> </div> <div> <div>Product - Customer Drw</div> </div> <div> <div>sheet 2 of 2</div> </div> <div> <div>rev</div> <div>A</div> </div> <div> <div>dwg no</div> <div>10143222</div> </div> </div>							