

**bel**

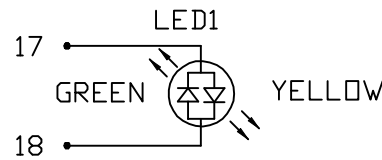
POWER | PROTECT | CONNECT

**DOCUMENT / PART NO.:** G27-122T-162A

**TITLE :** PRODUCT SPECIFICATION

ISSUE	DESCRIPTION OF CHANGE					REVIEWED BY	APPROVED BY					ECN#
1	PRELIMINARY					TONY YUAN						

THE INFORMATION CONTAINED HEREIN IS CONSIDERED "PROPRIETARY" TO BEL FUSE INC. AND SHALL NOT BE COPIED, REPRODUCED OR DISCLOSED WITHOUT THE WRITTEN APPROVAL OF BEL FUSE INC.



LED1 POLARITY			LED2 POLARITY		
PIN 17	PIN 18	COLOR	PIN 19	PIN 20	COLOR
+	-	YELLOW	+	-	YELLOW
-	+	GREEN	-	+	GREEN

ELECTRICAL CHARACTERISTICS @ 25°C

TURNS RATIO		1CT : 1CT
TP1		1CT : 1CT
TP2		1CT : 1CT
TP3		1CT : 1CT
TP4		1CT : 1CT
INS. LOSS (MAX)		
1MHZ TO 20MHZ		-0.8 dB
50MHZ		-1.0 dB
200MHZ		-1.2 dB
400MHZ		-2.0 dB
500MHZ		-3.0 dB
RET. LOSS (MIN)		
1MHZ - 40MHZ		-16 dB
40MHZ - 400 MHZ		-16+10LOG (F/40) dB
400MHZ - 500 MHZ		-6+30LOG (F/400) dB

CM TO DM REJ  
1MHZ - 500MHZ -30 dB MIN

HIPOT (Isolation Voltage): 2250VDC

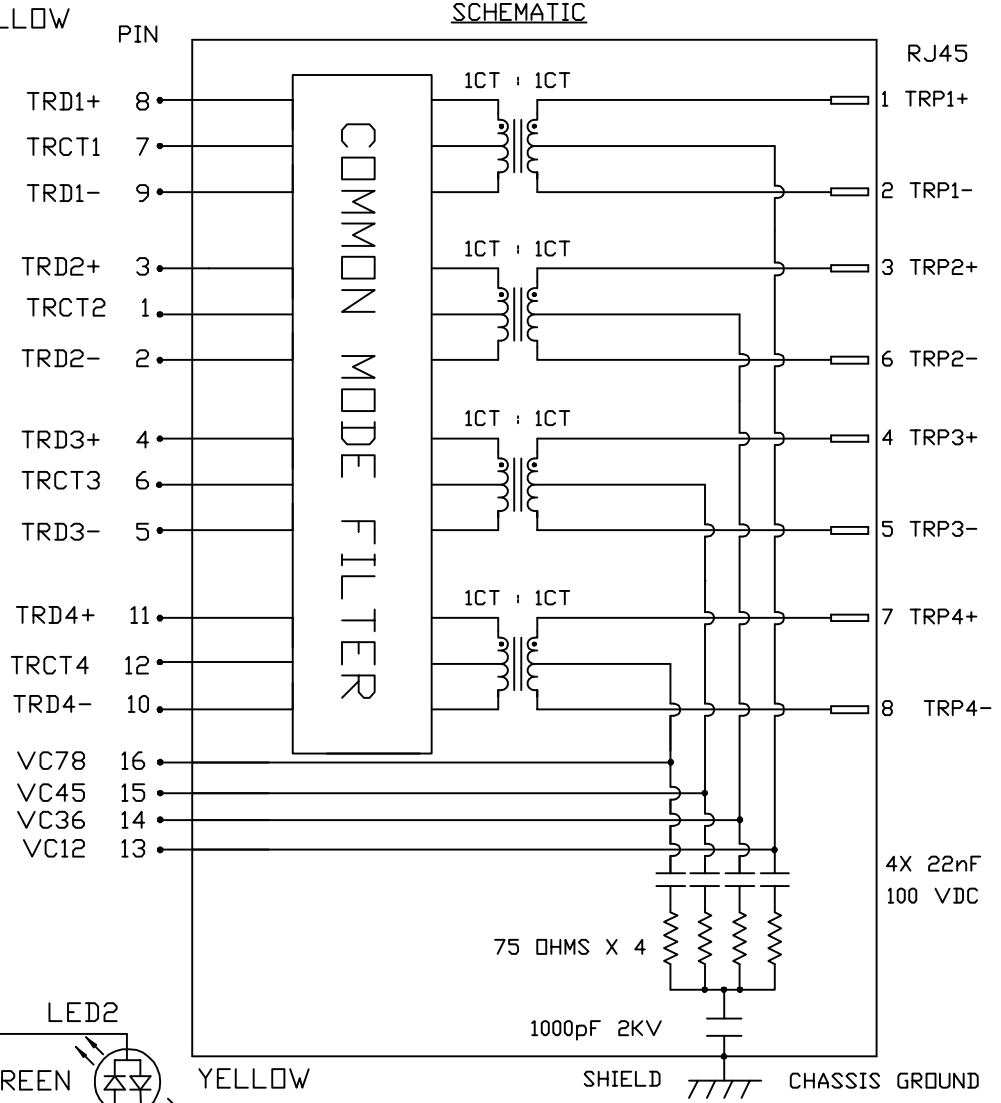
100% OF PRODUCTION TESTED TO COMPLY WITH IEEE 802.3 ISOLATION REQUIREMENTS.



BALANCED DC LINE CURRENT 1A MAX. CONTINUOUS.  
1.2A MAX. FOR 200 MILLISECONDS.

LED1 AND LED2

V <sub>F</sub> (FORWARD VOLTAGE)	I <sub>F</sub> =20mA	GREEN	2.2V TYP.
λ <sub>D</sub> (DOMINANT WAVELENGTH)	I <sub>F</sub> =20mA	YELLOW	2.1V TYP.
		GREEN	570nm TYP.
		YELLOW	590nm TYP.

OPERATING TEMPERATURE: -40°C TO +85°C.



ORIGINATED BY BILL LIU DATE 2024-07-18		TITLE  10 gigabit MagJack®  4PPoE 100W  PATENTED	PART NO. / DRAWING NO.  G27-122T-162A		STANDARD DIM. TOL. IN INCH		[ ] METRIC DIM. AS REF.		 <b>bel</b> MAGNETIC SOLUTIONS  a bel group
DRAWN BY PEILONG ZOU DATE 2024-07-18			FILE NAME  G27-122T-162A_1.DWG		.X		UNIT : INCH [mm]		
					SCALE : N/A				
					.XX				
				.XXX			SIZE : A4		

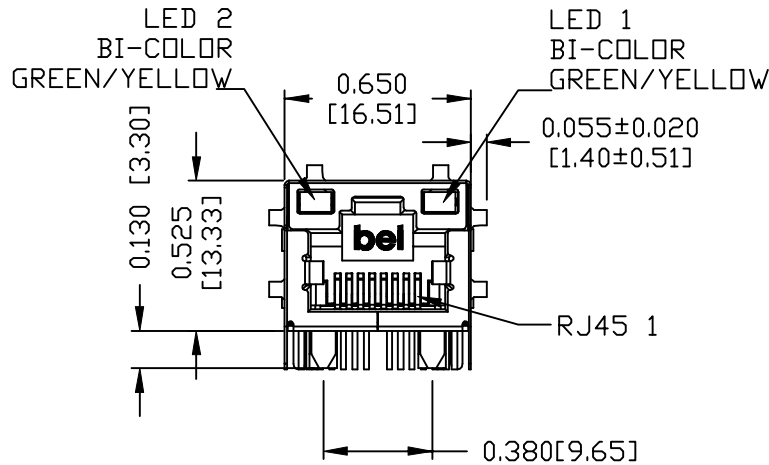
DC002(2)120214

This document is electronically generated. This is a controlled copy if used internally

THE INFORMATION CONTAINED HEREIN IS CONSIDERED "PROPRIETARY" TO BEL FUSE INC. AND SHALL NOT BE COPIED, REPRODUCED OR DISCLOSED WITHOUT THE WRITTEN APPROVAL OF BEL FUSE INC.

## MECHANICAL SPECIFICATION

RoHS

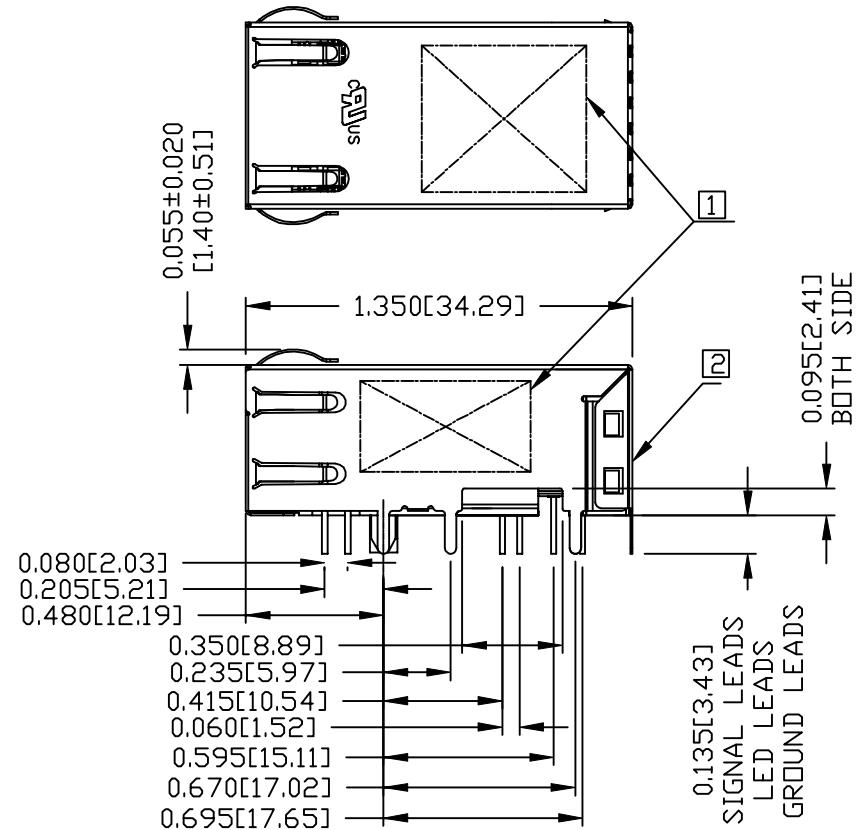


### NOTES:

PLASTIC HOUSING: THERMOPLASTIC PA, BLACK  
FLAMMABILITY RATING UL 94V-0  
CONTACTS: 50 MICRO-INCH HARD GOLD PLATING OR EQUIVALENT  
OUTPUT PINS: LEAD FREE COPPER WIRES, DIA 0.018 INCH.  
METAL SHIELD: NICKEL PLATED ON COPPER ALLOY.  
(ALL GROUND LEADS ARE SOLDER DIPPED)

**UL** USUL RECOGNIZED - FILE #E169987.

1. MARK PART WITH MFG. LOGO, MFG. NAME, PART NUMBER AND DATE CODE.
2. MARKING "PATENTED" IN BACK VIEW.
3. THE PRODUCT IS RoHS COMPLIANT.
4. JACK CAVITY CONFORMS TO FCC RULES AND REGULATIONS.
5. THE PRODUCT IS PATENTED. THE PATENT NUMBER ARE U.S. PAT. 7,924,130 AND U.S. PAT. 7,429,195 AND U.S. PAT. 6,840,817 AND U.S. PAT. 7,123,117.
6. THE AXIAL RETENTION FORCE OF RJ PORT IS 15LBS MIN.



7. THE PART IS COMPLIANT WITH WAVE SOLDERING, THE SUGGESTED PEAK WAVE SOLDERING CONDITION IS 260°C MAX. AND 10 SECONDS MAX..

ORIGINATED BY  
TONY YUAN  
DATE 2024-07-18

DRAWN BY  
TOWER YU  
DATE 2024-07-18

TITLE  
10 gigabit MagJack®  
4PPoE 100W  
PATENTED

PART NO. / DRAWING NO.  
G27-122T-162A

FILE NAME  
G27-122T-162A\_1.DWG

STANDARD DIM. TOL. IN INCH		[ ] METRIC DIM. AS REF.
.X		UNIT : INCH [mm]
.XX		SCALE : N/A
.XXX	±0.010	SIZE : A4

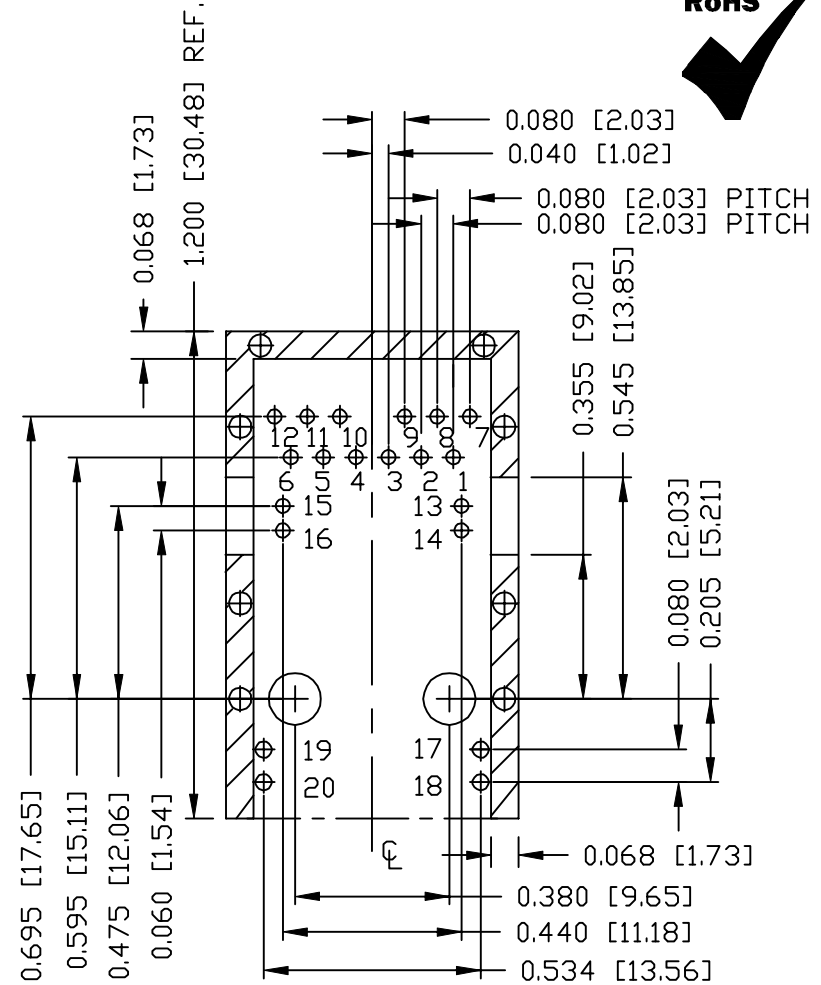
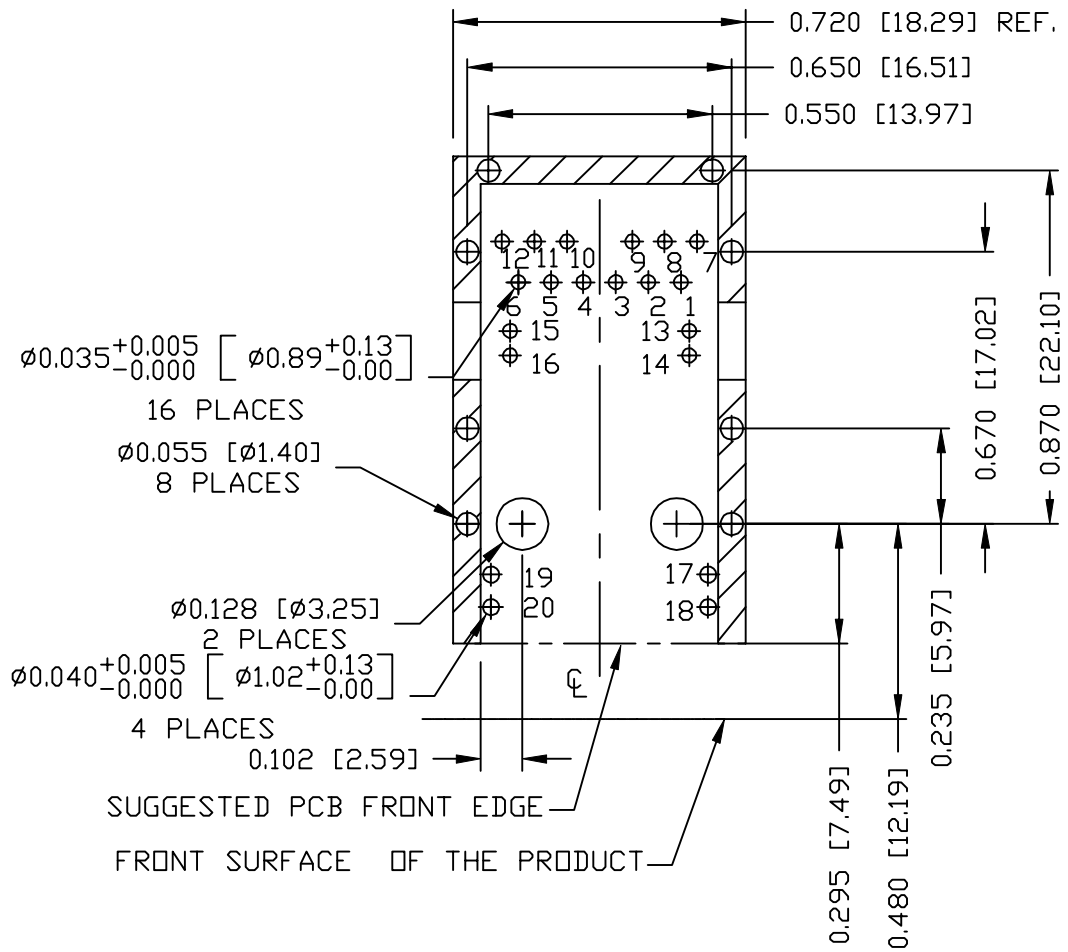
REV. : 1 PAGE : 3



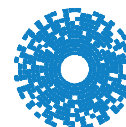


THE INFORMATION CONTAINED HEREIN IS CONSIDERED  
"PROPRIETARY" TO BEL FUSE INC. AND SHALL NOT BE  
COPIED, REPRODUCED OR DISCLOSED WITHOUT THE  
WRITTEN APPROVAL OF BEL FUSE INC.

RECOMMENDED PCB FOOTPRINT

COMPONENT SIDE VIEW



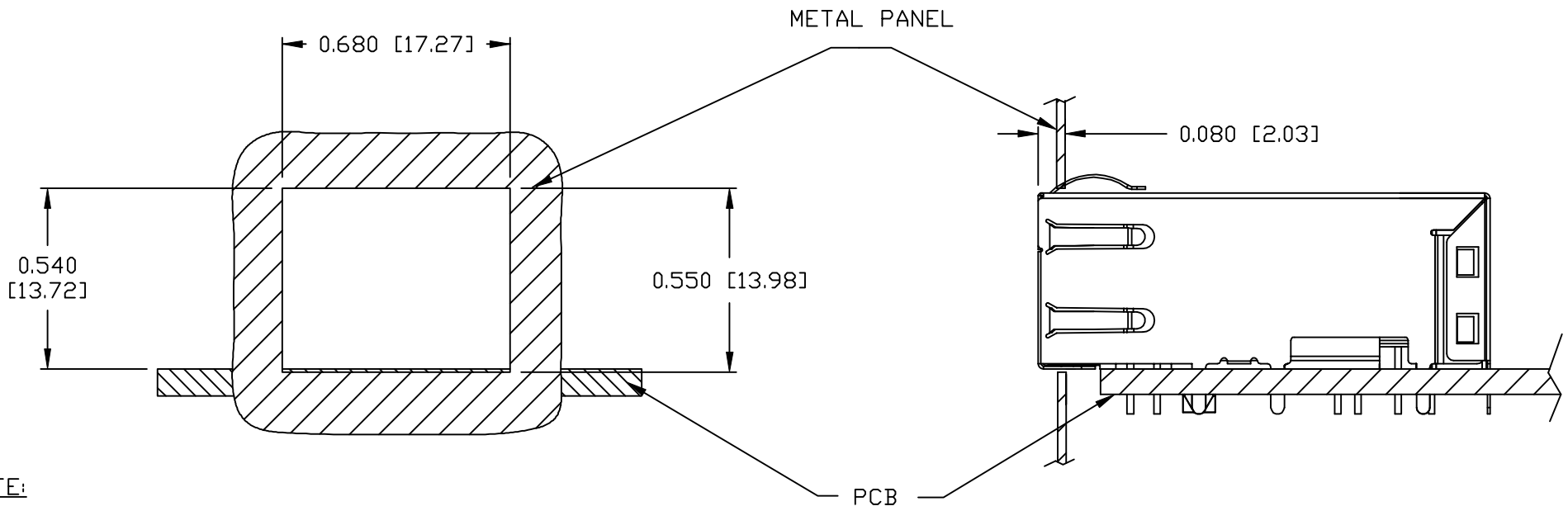
NOTES:  
THE SHADED AREA ON THE CUSTOMER BOARD ARE  
RECOMMENDED TO BE CLEAR OFF ANY VIA HOLE OR  
COMPONENT PAD.

ORIGINATED BY TONY YUAN DATE 2024-07-18		TITLE  10 gigabit MagJack®  4PPoE 100W  PATENTED	PART NO. / DRAWING NO.  G27-122T-162A		STANDARD DIM. TOL. IN INCH		[ ] METRIC DIM. AS REF.		 <b>bel</b> MAGNETIC SOLUTIONS a bel group
DRAWN BY TOWER YU DATE 2024-07-18			FILE NAME  G27-122T-162A_1.DWG		.X		UNIT : INCH [mm]		
					.XX		SCALE : N/A		
					.XXX		±0.004		

THE INFORMATION CONTAINED HEREIN IS CONSIDERED  
'PROPRIETARY' TO BEL FUSE INC. AND SHALL NOT BE  
COPIED, REPRODUCED OR DISCLOSED WITHOUT THE  
WRITTEN APPROVAL OF BEL FUSE INC.



SUGGESTED PANEL OPENING



NOTE:

THE DISTANCE OF PANEL INSIDE SURFACE RELATIVE TO FRONT SURFACE OF PART IS ONLY A SUGGESTION.  
IN CASE THIS DISTANCE IS DIFFERENT, THE REQUIRED PANEL OPENING DIMENSIONS CHANGE ACCORDINGLY.

PACKING INFORMATION

PACKING TRAY: : 0200M9999-K8 (TOP)  
0200M9999-K7 (BOTTOM)

PACKING QUANTITY : 48 PCS FINISHED GOODS PER TRAY  
9 TRAYS (432 PCS FINISHED GOODS) PER CARTON BOX

NOTE : CARDBOARDS ARE PLACED BETWEEN LAYERS OF PACKING TRAY INSIDE CARTON BOX  
(INCLUDE THE UPPERMOST AND LOWERMOST TRAY)

REV. : 1		PAGE : 5	
ORIGINATED BY TONY YUAN DATE 2024-07-18	TITLE 10 gigabit MagJack® 4PPoE 100W PATENTED	PART NO. / DRAWING NO. G27-122T-162A	
		FILE NAME G27-122T-162A_1.DWG	
		STANDARD DIM. TOL. IN INCH	
		[ ] METRIC DIM. AS REF.	
DRAWN BY TOWER YU DATE 2024-07-18		UNIT : INCH [mm]	
		SCALE : N/A	
		SIZE : A4	
		±0.005	

