



**Part Number :** [03092042](#)

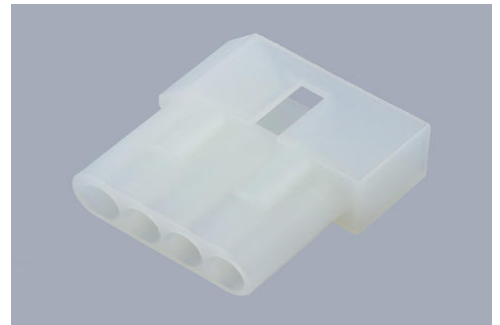
**Product Description :** 2.36mm Diameter  
Standard .093" Pin and Socket Plug Housing, 4 Circuits,  
Single Row

**Series Number :** 1490

**Status :** Active

**Product Category :** Connector Housings

**Engineering Part Number :** 1490-P1



---

## Documents and Resources

### Drawings

[003092042 sd.pdf](#)

[PK-1490-001-001.pdf](#)

### 3D Models and Design Files

[STEP AP242](#)

[SOLIDWORKS](#)

[Creo](#)

### Specifications

[PS-02-09-001.pdf](#)

[PS-1490-001-001.pdf](#)


[PS-1490-002-001.pdf](#)

[PS-43660-9999-001.pdf](#)

---

## Product Environment Compliance

### Compliance

GADSL/IMDS	Not Relevant
China RoHS	 per SJ/T 11365-2006
EU ELV	Not Relevant
Low-Halogen Status	Low-Halogen per IEC 61249-2-21
REACH SVHC	Not Contained per D(2025)7771-DC (04 Feb 2026)
EU RoHS	Compliant per EU 2015/863

## Compliance Statements

- EU RoHS
- REACH SVHC
- Low-Halogen

## Industry Documents

- IPC 1752A Class C
- IPC 1752A Class D
- Molex Product Compliance Declaration
- IEC-62474
- chemSHERPA (xml)

## Substances of Interest

- PFAS

## EU RoHS Certificate of Compliance

## Additional Product Compliance Information

---

## Part Details

### General

Status	Active
Category	Connector Housings
Series	1490
Description	2.36mm Diameter Standard .093" Pin and Socket Plug Housing, 4 Circuits, Single Row
Application	Power, Wire-to-Wire
Comments	14.0A max. can be achieved when housing is used with 42477 or 42478 terminals
Product Name	Standard .093"
UPC	800753614840

### Agency

CSA	LR19980
UL	E29179

### Physical

Circuits Detail	(1 x 4)
Circuits (maximum)	4

Color - Resin	Natural
Flammability	94V-2
Gender	Plug
Glow-Wire Capable	No
Material - Resin	Nylon
Net Weight	2.142/g
Number of Rows	1
Packaging Type	Bag
Panel Mount	No
Pitch - Mating Interface	5.03mm
Pitch - Termination Interface	5.03mm
Stackable	No
Temperature Range - Operating	-40° to +105°C

### Solder Process Data

Lead-Free Process Capability	N/A
------------------------------	-----

---

### Mates With / Use With

#### Mates with Part(s)

Description	Part Number
2.36mm Diameter Standard .093" Pin and Socket Receptacle Housing, 4 Circuits, Single Row, Natural	<a href="#"><u>03091041</u></a>
2.36mm Diameter Standard .093" Pin and Socket Receptacle Housing, 4 Circuits, Single Row, Natural	<a href="#"><u>03091042</u></a>

#### Use with Part(s)

Description	Part Number
Standard .093" Pin and Socket Female Crimp Terminals	<a href="#"><u>1189</u></a>
Standard .093" Pin and Socket Male Crimp Terminals	<a href="#"><u>1190</u></a>
Standard .093" Pin and Socket	<a href="#"><u>1380</u></a>

Male Crimp Terminals	
Standard .093" Pin and Socket Female Crimp Terminals	<u>1381</u>
Standard .093" Pin and Socket Male Crimp Terminal	<u>1434</u>
Standard .093" Pin and Socket Male Crimp Grounding Terminals	<u>1973</u>
Standard .093" Pin and Socket Female Crimp Terminal	<u>4550</u>

---

This document was generated on May 21, 2026