

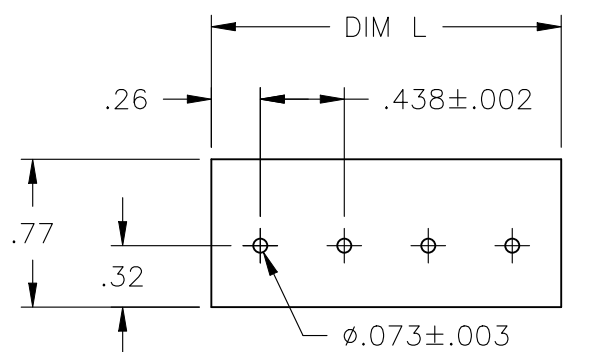
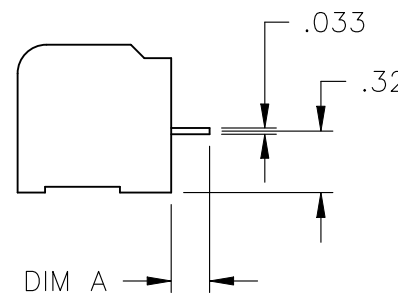
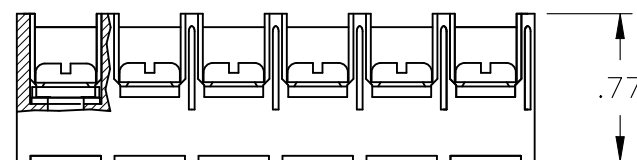
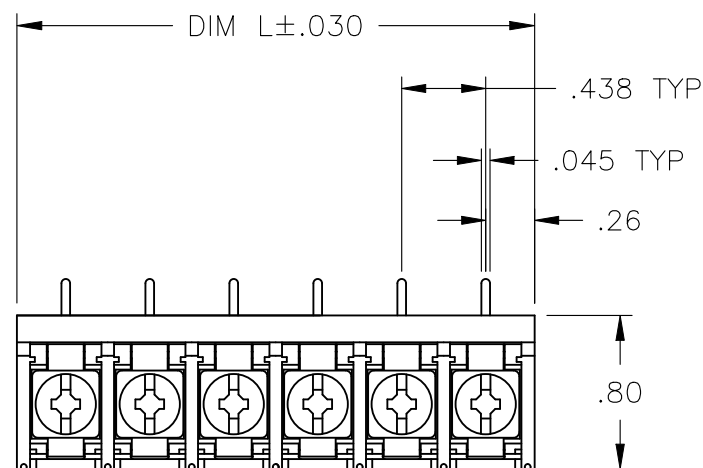
REVISIONS

P	LTR	DESCRIPTION	DATE	DWN	APVD
	D2	OBSOLETE THE PN 1-1546566-3, 1-1546566-5 AND 1-1546566-7	29SEP2023	SP	PS

MATERIALS:
 HOUSING: THERMOPLASTIC, UL94V-0, BLACK.
 TERMINAL: BRIGHT TIN PLATED COPPER ALLOY.
 SCREWS: 8-32, ZINC PLATED STEEL.

ELECTRICAL:
 CURRENT RATING: 30A
 VOLTAGE RATING: 600V
 WIRE RANGE: 10-18 AWG (UL)
 10-22 AWG (CSA)

MECHANICAL:
 RECOMMENDED TORQUE: 20 IN-LB.
 OPERATING TEMP.: -40°C TO +120°C.



RECOMMENDED PCB LAYOUT

	.126	4.010	9	8PCR-09-006A	2-1546566-1
	.200	8.823	20	8PCR-20-006	2-1546566-0
	.200	8.385	19	8PCR-19-006	1-1546566-9
	.200	7.948	18	8PCR-18-006	1-1546566-8
OBSOLETE	.200	7.510	17	8PCR-17-006	1-1546566-7
	.200	7.073	16	8PCR-16-006	1-1546566-6
OBSOLETE	.200	6.635	15	8PCR-15-006	1-1546566-5
	.200	6.198	14	8PCR-14-006	796875-3
OBSOLETE	.200	5.760	13	8PCR-13-006	1-1546566-3
	.200	5.323	12	8PCR-12-006	1-1546566-2
	.200	4.885	11	8PCR-11-006	796875-1
	.200	4.448	10	8PCR-10-006	5-1546159-4
	.200	4.010	9	8PCR-09-006	1546566-9
	.200	3.573	8	8PCR-08-006	4-1437657-3
	.200	3.135	7	8PCR-07-006	5-1546159-2
	.200	2.698	6	8PCR-06-006	3-1437657-7
	.200	2.260	5	8PCR-05-006	3-1437657-3
	.200	1.823	4	8PCR-04-006	3-1437657-1
	.200	1.385	3	8PCR-03-006	2-1437657-8
	.200	.948	2	8PCR-02-006	2-1437657-2
	DIM A +.020/-0.010	DIM L	NO OF POS	TE NUMBER	TE NUMBER

THIS DRAWING IS A CONTROLLED DOCUMENT.

DWN S SCHLEGEL 10/25/06

CHK S. YODER 10/25/06

APVD S. YODER 10/25/06

PRODUCT SPEC

APPLICATION SPEC

WEIGHT

CUSTOMER DRAWING



8PCR-XX-006 ASSEMBLY

SIZE	CAGE CODE	DRAWING NO	RESTRICTED TO
A3	00779	C-2-1437657-2	-

DIMENSIONS: INCHES	TOLERANCES UNLESS OTHERWISE SPECIFIED:
	0 PLC ± -
	1 PLC ± -
	2 PLC ± .01
	3 PLC ± .005
	4 PLC ± -
	ANGLES ± 1°
MATERIAL	FINISH
-	-

SCALE	SHEET	REV
1:1	1 OF 1	D2