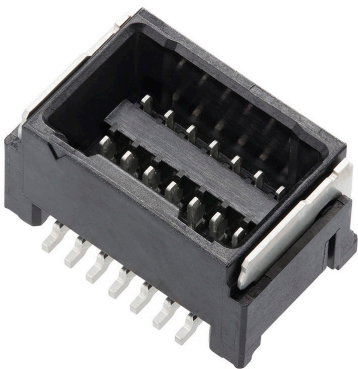




**Part Number :** [2077600871](#)  
**Product Description :** 1.25mm Pitch, Micro-Lock Plus PCB Header with Potting Capability, Dual Row, Vertical, Surface Mount, Tin-Bismuth Plating, 8 Circuits, Low-Halogen, Black  
**Series Number :** 207760  
**Status :** Active  
**Product Category :** PCB Headers and Receptacles



## Documents & Resources


**Drawings**  
[2077600871\\_sd.pdf](#)

**3D Models and Design Files**  
[2077600871.dxf](#)  
[2077600871.pdf](#)  
[2077600871\\_stp.zip](#)

**Specifications**  
[5054320000-AS-000.pdf](#)  
[2077609200-SPK-200.pdf](#)  
[2045230001-PS-000.pdf](#)  
[2045231001-PS-000.pdf](#)  
[2145270001-PS-000.pdf](#)

## Product Environment Compliance

### Compliance

GADSL/IMDS	Compliant with Exemption 33; 44
China RoHS	
EU ELV	Not Relevant
Low-Halogen Status	Low-Halogen per IEC 61249-2-21
REACH SVHC	Not Contained per D(2024)6225-DC (07 Nov 2024)
EU RoHS	Compliant per EU 2015/863

### [Multiple Part Product Compliance Statements](#)

- Eu RoHS
- REACH SVHC
- Low-Halogen

#### Multiple Part Industry Compliance Documents

- IPC 1752A Class C
- IPC 1752A Class D
- Molex Product Compliance Declaration
- IEC-62474
- chemSHERPA (xml)

#### EU RoHS Certificate of Compliance

---

## Part Details

### General

Status	Active
Category	PCB Headers and Receptacles
Series	207760
Description	1.25mm Pitch, Micro-Lock Plus PCB Header with Potting Capability, Dual Row, Vertical, Surface Mount, Tin-Bismuth Plating, 8 Circuits, Low-Halogen, Black
Application	Signal, Wire-to-Board
Component Type	PCB Header
Product Name	Micro-Lock Plus
UPC	193264084883

### Agency

UL	E29179
----	--------

### Electrical

Current - Maximum per Contact	2.0A
Voltage - Maximum	50V AC (RMS)/DC

### Physical

Breakaway	No
Circuits (Loaded)	8
Circuits (maximum)	8

Color - Resin	Black
Durability (mating cycles max)	30
First Mate / Last Break	No
Flammability	94V-1
Glow-Wire Capable	No
Guide to Mating Part	No
Keying to Mating Part	Yes
Lock to Mating Part	Yes
Material - Metal	Brass
Material - Plating Mating	Tin-Bismuth
Material - Plating Termination	Tin-Bismuth
Material - Resin	Polyamide
Net Weight	806.870/mg
Number of Rows	2
Orientation	Vertical
Packaging Type	Embossed Tape on Reel
PCB Locator	No
PCB Retention	Yes
Pitch - Mating Interface	1.25mm
Pitch - Termination Interface	1.25mm
Plating min - Mating	1.000µm
Plating min - Termination	1.000µm
Polarized to Mating Part	Yes
Polarized to PCB	Yes
Robotic Placement	Vacuum Pick-Up Area
Shrouded	Fully
Stackable	No
Temperature Range - Operating	-40° to +105°C
Termination Interface Style	Surface Mount

---

## Mates With / Use With

### Mates with Part(s)

Description	Part Number
-------------	-------------

1.25mm Pitch Micro-Lock Plus Dual Row Receptacle Housings	<u>204523</u>
1.25mm Pitch Micro-Lock Plus TPA Type Dual Row Receptacle Housings	<u>214527</u>

---

This document was generated on Jan 11, 2025