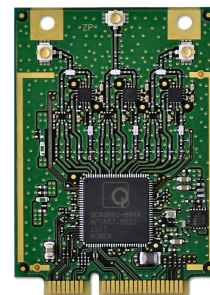


SX-PCEAC

802.11ac PCI Express Wireless LAN Module



New PCIe Mini Card with 3x3 Architecture

The SX-PCEAC is an 802.11ac compliant single-band 3x3 PCIe Mini Card. It is based on the the Qualcomm Atheros QCA9880 chipset, designed to deliver wireless data rates of up to 1.3Gbps. The SX-PCEAC supports 20/40/80MHz and 256-QAM to maximize bandwidth efficiency.

Unlike the other similar solutions, the design, manufacturing, and tuning processes are strictly controlled in-house at the Silex state-of-the-art ISO9001 facility in Japan. Each card is individually tested and inspected to ensure the industry's highest quality resulting greater performance and reliability.

Typical Applications:

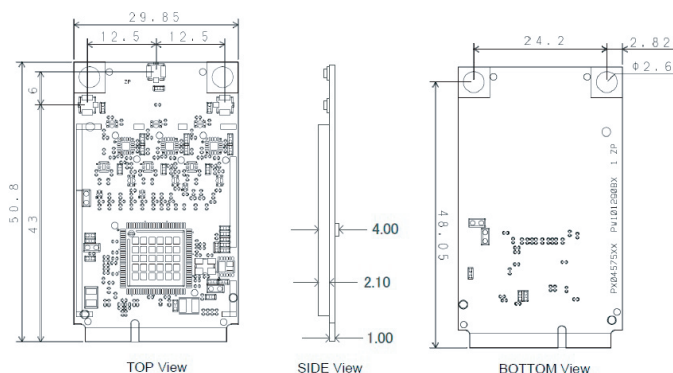
SX-PCEAC card gives customers the ability to easily and reliably support applications where this extra bandwidth is required, like deploying HD video over Wi-Fi.

Key Features:

- Max data transfer rate: 1.3Gbps (Theoretical value, at 11ac mode)
- PCI Express interface
- Qualcomm Atheros QCA9880 chipset
- IEEE 802.11ac(Wave1)/a/n
 - Wide band 80MHz mode
 - High density modulation mode (256QAM)
- 3x3 SU-MIMO enhances high speed and stability
- Silex Linux reference driver with IEEE802.11x EAP support
- Wireless standard
 - IEEE 802.11ac/a/n/e/h/i
- EU directive RoHS
- North America(FCC/IC), Japan (TELEC to be certified)

Specifications:

Product Name	SX-PCEAC
Chipset	Qualcomm Atheros QCA9880
Host Interface	PCI Express mini card v1.2
Radio Specifications	IEEE 802.11 ac (Wave1)/a/n
Antenna Terminal	U.FL connector x3
Operating Voltage	3.3V \pm 5%
Current Consumption	Sending: Min. 390mA, Max. 950mA. Receiving: 370mA Typ.
Weight	7.3g
Operating Temperature	Temperature: 0 - +60 degrees Humidity: 20 - 80%RH
Storage Temperature	Temperature: -20 - +85 degrees Humidity: 20 - 85%RH
Dimensions	29.9 x 50.8 x 4.0mm Thickness =1.0mm
Connector Type	PCI Express mini card edge



silex technology is a registered trademark of silex technology, Inc. Other product or brand names may be registered trademarks or trademarks of their respective owners. Technical information and specifications are subject to change without notice. © 2014 silex technology, Inc. All rights reserved.

silex global sales & support locations