



**Part Number :** [2147352001](#)

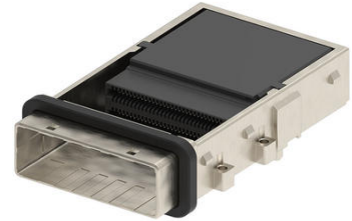
**Product Description :** zCD (CDFP) Connector Assembly, 16X, 120 Circuits, PCIe Gen 5, 0.75mm Pitch, with EMI Gasket, Gold (Au) Over Nickel Plated

**Series Number :** 214735

**Status :** Active

**Product Category :** High-Speed I/O Connectors

**Engineering Part Number :** 2147351001



---

## Documents and Resources


### Drawings

[2147352001 sd.pdf](#)

---

## Product Environment Compliance

### Compliance

GADSL/IMDS	Not Relevant
China RoHS	 per SJ/T 11365-2006
EU ELV	Not Relevant
Low-Halogen Status	Low-Halogen per IEC 61249-2-21
REACH SVHC	Contains Lead; Cadmium per D(2025)7771-DC (04 Feb 2026)
EU RoHS	Compliant per EU 2015/863

### Compliance Statements

- EU RoHS
- REACH SVHC
- Low-Halogen

### Industry Documents

- IPC 1752A Class C
- IPC 1752A Class D
- Molex Product Compliance Declaration
- IEC-62474
- chemSHERPA (xml)

### Substances of Interest

- PFAS

EU RoHS Certificate of Compliance

Additional Product Compliance Information

---

## Part Details

### General

Status	Active
Category	High-Speed I/O Connectors
Series	214735
Description	zCD (CDFP) Connector Assembly, 16X, 120 Circuits, PCIe Gen 5, 0.75mm Pitch, with EMI Gasket, Gold (Au) Over Nickel Plated
Application	Wire-to-Board
Component Type	Receptacle
Product Name	CDFP,zCD
Type	Pluggable
UPC	196823067662

### Agency

UL	E29179
----	--------

### Electrical

Current - Maximum per Contact	1.0A
Data Rate	28.0 Gbps
Grounding to Panel	Bezel
Shielded	Yes
Shield Type	EMI Gasket
Voltage - Maximum	30V AC (RMS)/DC

### Physical

Circuits (Loaded)	120
Color - Resin	Black
Durability (mating cycles max)	250
Flammability	94V-0

Gender	Female
Keying to Mating Part	No
Lock to Mating Part	Yes
Material - Metal	Copper Alloy
Material - Plating Mating	Gold
Material - Plating Termination	Tin
Material - Resin	High Temperature Thermoplastic
Net Weight	32.909/g
Number of Rows	4
Orientation	Right Angle
Packaging Type	Tray
Panel Mount	Yes
PCB Locator	Yes
PCB Retention	Yes
PCB Thickness - Recommended	1.57mm
Pitch - Mating Interface	0.75mm
Plating min - Mating	0.762μm
Plating min - Termination	0.762μm
Polarized to Mating Part	Yes
Polarized to PCB	Yes
Ports	1
Temperature Range - Operating	-40° to +85°C
Termination Interface Style	Through Hole - Compliant Pin

---

This document was generated on Apr 21, 2026