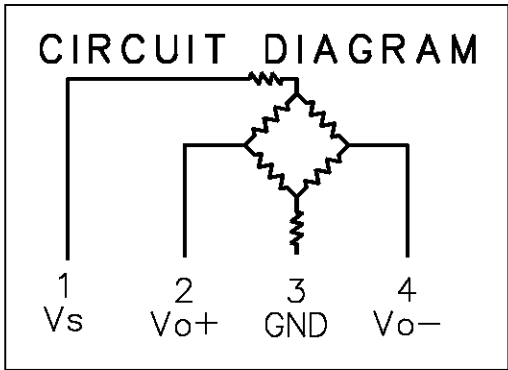


PERFORMANCE CHARACTERISTICS				
(ELECTRICAL PERFORMANCE AT 4.66*0.01 VVDC EXCITATION, 25°C)				
PARAMETERS	MIN	TYP	MIN	UNITS
PRESSURE RANGE	-700		+750	mmHg
SPAN (-700 TO +750 mmHg)	82.6	87	91.4	mV
NULL OFFSET	-0.60	0	+0.60	mV
NULL SHIFT (0°C TO 25°C OR 25°C TO 50°C)			±18	uV/C
SPAN SHIFT (0°C TO 25°C OR 25°C TO 50°C)			±0.02	uV/mmHg/C
LINEARITY			±0.7	%SPAN
REPEATABILITY			±0.04	%SPAN
HYSTERESIS			±0.05	%SPAN
RESPONSE TIME			1.0	ms
OVER PRESSURE	-750		+2250	mmHg
INPUT RESISTANCE		7.5		KOhms
OUTPUT RESISTANCE		2.5		KOhms
LONG TERM STABILITY		±0.35		%SPAN/YR
STORAGE TEMPERATURE	-55°C TO +105°C			
OPERATING TEMPERATURE	-40°C TO +85°C			
COMPENSATED TEMPERATURE	0°C TO +50°C			



INCH	METRIC
.016	0,41
.02	0,5
.04	1,0
.05	1,3
.07	1,8
.09	2,3
.10	2,5
.21	5,3
.25	6,4
.31	7,9
.35	8,9
.50	12,7
.60	15,2
.87	22,1

- NOTES
- 1 - SPAN IS THE ALGEBRAIC DIFFERENCE BETWEEN OUTPUT AT -700 AND +750 mmHg.
 - 2 - TEMPERATURE ERROR IS CALCULATED WITH RESPECT TO 25°C
 - 3 - INPUT MEDIA IS LIMITED TO ONLY THOSE MATERIALS THAT WILL NOT ATTACK SILICONE, THE HOUSING MATERIAL OR SEAL MATERIAL
 - 4 - TERMINALS ARE PLATED FOR SOLDERING (LIMIT SOLDERING TO 315°C FOR 10 SECONDS MAXIMUM)
 - 5 PIN 1 IS IDENTIFIED BY NOTCH IN LEAD
 - 6 - SENSOR IS OPERATIONAL OVER VACUUM RANGE
 - 7 - SENSOR IS RATIOMETRIC TO SUPPLY VOLTAGE
 - 8 CATALOG LISTING AND DATE CODE HERE. CATALOG LISTING BRAND IS 6CF6G23. ALTERNATE FORMAT OF CATALOG LISTING BRAND IS THE ENTIRE CATALOG LISTING